

WPLED26/PC

26 Watt LED Wallpack. Equivalent to 175W MH wallpack. Includes both junction box and surface mount for recessed box. IESNA Full Cutoff, Fully Shielded optics. 5 Year warranty.

Color: Bronze

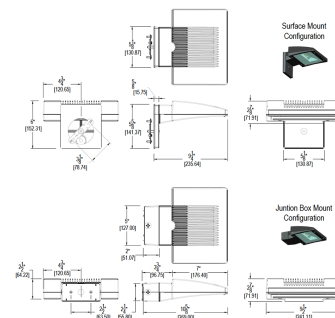
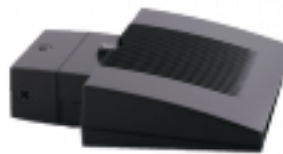
Weight: 7.5 lbs

LED Info

Watts: 26W
 Color Temp: 5000K (Cool)
 Color Accuracy: 66
 L70 Lifespan: 100000
 LM79 Lumens: 1,816
 Efficacy: 60 LPW

Driver Info

Type: Constant Current
 120V: 0.26A
 208V: N/A
 240V: N/A
 277V: N/A
 Input Watts: 30W
 Efficiency: 86%



Technical Specifications

UL Listing:

Suitable for wet locations. Suitable for mounting within 1.2m (4ft) of the ground.

Lumen Maintenance:

100,000-hour LED lifespan based on IES LM-80 results and TM-21 calculations.

IP Rating:

Ingress Protection rating of IP66 for dust and water.

Photocell:

120V Photocell Included. Photocell is only compatible with 120V.

GSA Schedule:

This product is suitable for listing on the GSA Schedule of the US General Services in accordance with FAR Subpart 25.4.

Finish:

Our environmentally friendly polyester powder coatings are formulated for high-durability and long-lasting color, and contains no VOC or toxic heavy metals.

Color Consistency:

7-step MacAdam Ellipse binning to achieve consistent fixture-to-fixture color.

Color Stability:

LED color temperature is warranted to shift no more than 200K in CCT over a 5 year period.

Color Uniformity:

RAB's range of CCT (Correlated color temperature) follows the guidelines of the American National Standard for Specifications for the Chromaticity of Solid State Lighting (SSL) Products, ANSI C78.377-2008.

Ambient Temperature:

Suitable for use in 40°C ambient temperatures.

Fixture Efficacy:

61 Lumens per Watt

Color Accuracy:

66 CRI

Color Temperature (Nominal CCT):

5000K

Driver:

Multi-chip 26W high output long life LED Driver
 Constant Current, 720mA, Class 2, 6 KV Surge Protection, 100V-277V, 50-60 Hz, 100-240V .4 Amps.

Cold Weather Starting:

The minimum starting temperature is -40°F/-40°C.

Thermal Management:

Cast aluminum Thermal Management system for optimal heat sinking. The LPACK is designed for cool operation, most efficient output and maximum LED life by minimizing LED junction temperature.

California Title 24:

WPLED complies with California Title 24 building and electrical codes.

Equivalency:

The WPLED26 is Equivalent in delivered lumens to a 175W Metal Halide Wallpack.

HID Replacement Range:

The WPLED26 can be used to replace 150 - 200W Metal Halide Wallpacks based on delivered lumens.

Green Technology:

RAB LEDs are Mercury, Arsenic and UV free.



Patents:

The WPLED design is protected by U.S. Pat. D634878, Canada Pat 134878, China Pat. CN301649064S.

For use on LEED Buildings:

IDA Dark Sky Approval means that this fixture can be used to achieve LEED Credits for Light Pollution Reduction.

Dark Sky Approved:

The International Dark Sky Association has approved this product as a full cutoff, fully shielded luminaire.

Country of Origin:

Designed by RAB in New Jersey and assembled in Taiwan.

Trade Agreements Act Compliant:

This product is a product of Taiwan and a "designated country" end product that complies with the Trade Agreements Act.