

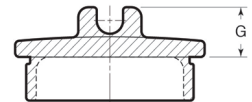
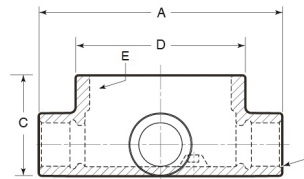
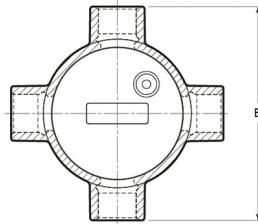
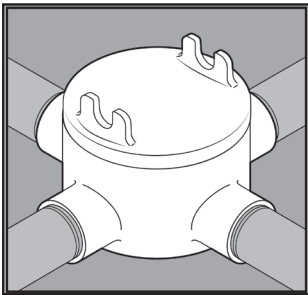
# STAINLESS STEEL - HAZARDOUS LOCATION FITTINGS

## **GUAX CONDUIT BODIES**



### **APPLICATION**

- Installed in hazardous area locations to act as pulling and splice boxes, connect lengths of conduit and provide access to conductors for maintenance
- Hold the following ratings:
  - CL I, DIV 1, Groups C, D
  - CL II, DIV 1, Groups E, F, G
  - CL III, NEMA 4X Rated
- Offered in five configurations: C, X, T, B, L
- Supplied complete with cover that has cast-in brackets for use with breaker-bars for tightening/loosening and a neoprene o-ring
- Manufactured in stainless steel to help prevent corrosion
- Can be installed using ordinary hand tools and require little maintenance or repair
- Provided in a bright, polished finish that does not require touch up or painting



### **PRODUCT DETAILS**

#### **Material:**

- Body, Cover: CF8M (316 SS)
- O-ring: Neoprene

#### **Standards:**

ASTM A351, ASTM F593

#### **Country of Origin:**

100% Made in USA

#### **UL File Number:**

QBCR.E339535  
(Standards 1203, 50, 50E)

#### **Canada UL File Number:**

QBCR7.E339535  
(Standards 1203, 50, 50E)

Part Number	Conduit Size	Weight/ Each (lbs.)	Dimension (in.)						
			A	B	C	D	E	F	G
GUAX75	¾ in.	4	5.16	5.16	2.13	3.60	3-½-12 UNC	¾-14 NPT	0.94
GUAX100	1 in.	5	5.54	5.54	2.13	3.60	3-½-12 UNC	1-11-½ NPT	0.94

