

# Connected Components Workbench™ Software

Design and Configuration Software

## Standard Edition

Easily acquire to program your controllers, configure your devices and design your operator interface screens.

Supporting:

- Micro800® Controllers
- PowerFlex® Drives
- SMC™ Soft Starters
- PanelView™ Component Graphic Terminals
- PanelView 800 Graphic Terminals
- Kinetix® Component Servo Drives
- Guardmaster® 440C Configurable Safety Relay
- Guardmaster Speed Monitoring Safety Relay

## Developer Edition\*

Additional features offered to enhance the user experience.

- Archive Manager
- Enhanced Micro800 Programming experience
  - Run Mode Change
  - Spy List
  - User Defined Data type
  - Intellectual Property Protection

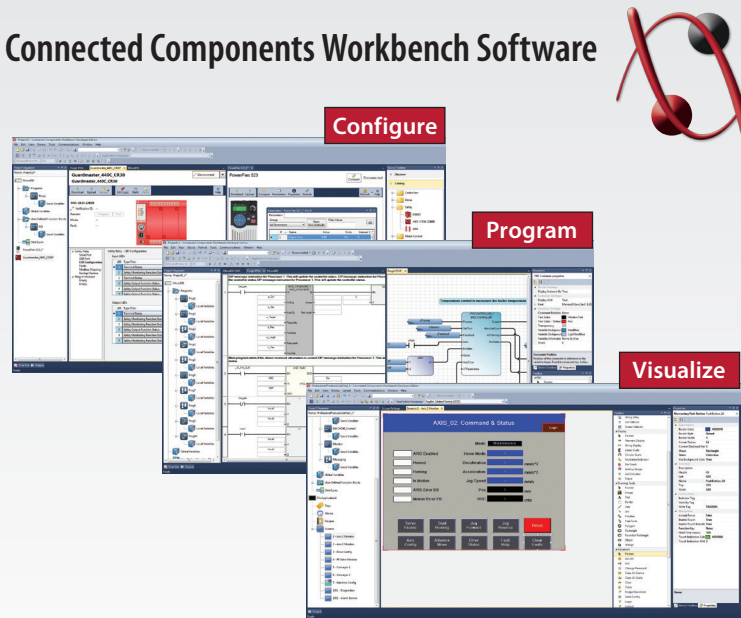
\* Contact your local distributor for pricing

## How to Obtain

Download your free copy of Connected Components Workbench software:

[www.rockwellautomation.com/go/lit/ccws](http://www.rockwellautomation.com/go/lit/ccws)

## Connected Components Workbench Software



## Overview

Connected Components Workbench, design and configuration software offers controller programming, device configuration and integration with HMI editor. Connected Components Workbench software is developed based on proven Rockwell Automation and Microsoft Visual Studio technology. Connected Components Workbench software can help to minimize your initial machine development time and cost. The software follows IEC 61131-3 PLC programming standard and the Standard Edition of the software is free to download. Free updates and support are also included to help you minimize your effort.

## Advantages

**Easy to Configure** – Single software package reduces initial time to set-up controls.

**Easy to Program** – User-defined function blocks speed machine development.

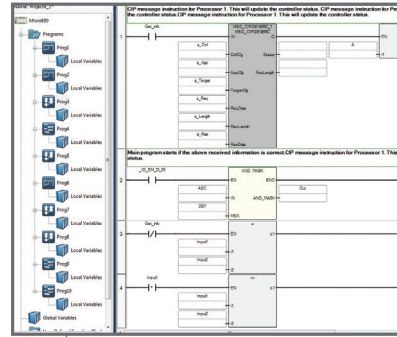
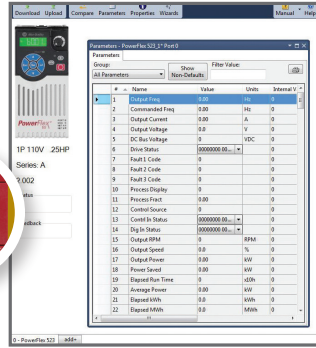
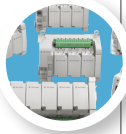
**Easy to Visualize** – Tag configuration and screen design ease operator interface configuration.

LISTEN.  
THINK.  
SOLVE.™

# Minimize Start-up Time with Connected Components Workbench Software

## Easy to Configure

- Common, simple configuration helps reduce development time
- Wizards to guide through the configuration of PowerFlex Drives
- Connectivity to select devices via plug & play USB communication
- Configure safety relays using built-in function blocks instead of wiring (Guardmaster 440C-CR30)



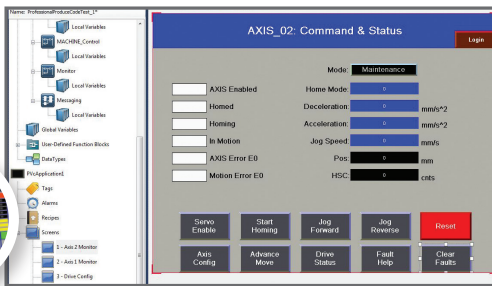
## Easy to Program

- Program Micro800 using Ladder Diagram, Function Block, Structured Text editors that support symbolic addressing
- Extensive use of Microsoft and IEC 61131-3 PLC programming standards
- Standard PLCopen motion instructions to simplify Pulse Train Output axis programming
- Value add through sample code from Rockwell Automation and partners via user defined function blocks



## Easy to Visualize

- PanelView Component / PanelView 800 application development is integrated with Micro800 controller in Connected Component Workbench software
- Micro800 variable names can be directly referenced by HMI tags which result in less complexity and time-saving benefits
- Configure predefined HMI templates to your needs (Download from Connected Components Accelerated Toolkit)



## Hardware Requirements

To use Connected Components Workbench software effectively, your personal computer must meet the following hardware requirements:

	Min. Requirements	Recommended
Processor	Intel Pentium 4 2.8GHz or equivalent	Intel Core i5 2.4GHz or equivalent
RAM Memory	2 GB	8 GB or more
Hard Disk Space	10 GB free	10 GB free or more
Optical Drive	DVD-ROM	
Pointing Device	Any Microsoft Windows compatible pointing device	

## Software Requirements

This version of Connected Components Workbench software has been successfully tested with the following operating systems, versions, and service packs:

Supported Operating System	Tested Editions
Windows 7	32 and 64 bit
Windows Server 2008 R2	32 and 64 bit
Windows 8 and 8.1	32 and 64 bit

Allen-Bradley, Connected Components Workbench, Guardmaster, Kinetix, LISTEN. THINK. SOLVE., Micro800, PanelView, PowerFlex, Rockwell Automation, Rockwell Software and SMC are trademarks of Rockwell Automation. Trademarks not belonging to Rockwell Automation are property of their respective companies.

[www.rockwellautomation.com](http://www.rockwellautomation.com)

### Power, Control and Information Solutions Headquarters

Americas: Rockwell Automation, 1201 South Second Street, Milwaukee, WI 53204-2496 USA, Tel: (1) 414.382.2000, Fax: (1) 414.382.4444

Europe/Middle East/Africa: Rockwell Automation NV, Pegasus Park, De Kleetlaan 12a, 1831 Diegem, Belgium, Tel: (32) 2 663 0600, Fax: (32) 2 663 0640

Asia Pacific: Rockwell Automation, Level 14, Core F, Cyberport 3, 100 Cyberport Road, Hong Kong, Tel: (852) 2887 4788, Fax: (852) 2508 1846