

JUNO[®]**MonoLine**[®]

Project: _____

Fixture Type: _____

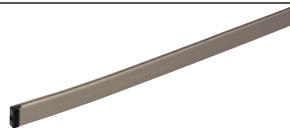
Location: _____

Contact/Phone: _____

Line Voltage Flexible Track

SYSTEM COMPONENTS

MLFT MonoLine 4 Foot Rail Section (Includes Two MLE)



PRODUCT DESCRIPTION

Hand bendable aluminum core track. Track may be bent to a minimum radius of 18". Rated 20 amps at 120 volts. End caps included.

13/16" Height 48" Length

ORDERING INFORMATION

| Series | Length | Hardware Finish |
|----------------------|--------------------------------|-------------------------|
| <input type="text"/> | <input type="text"/> | <input type="text"/> |
| MLFT | 4FT 4 FT Nominal Length | STN Satin Nickel |

Ordering Example: MLFT 4FT STN

MLFT MonoLine 8 Foot Rail Section (Includes Two MLE)



PRODUCT DESCRIPTION

Hand bendable aluminum core track. Track may be bent to a minimum radius of 18". Rated 20 amps at 120 volts. End caps included.

13/16" Height 96" Length

ORDERING INFORMATION

| Series | Length | Hardware Finish |
|----------------------|--------------------------------|-------------------------|
| <input type="text"/> | <input type="text"/> | <input type="text"/> |
| MLFT | 8FT 8 FT Nominal Length | STN Satin Nickel |

Ordering Example: MLFT 4FT STN

MLE MonoLine Standard End Caps (Set of 2)



PRODUCT DESCRIPTION

Covers exposed conductor ends of MonoLine track. Required when installing track sections cut in the field.

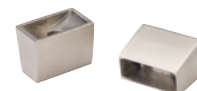
13/16" Height 1/4" Length

ORDERING INFORMATION

| Series | Hardware Finish |
|----------------------|----------------------|
| <input type="text"/> | <input type="text"/> |
| MLE | CLRF Clear |

Ordering Example: MLE CLRF

MLE MonoLine Decorative End Cap Covers (Set of 2)



PRODUCT DESCRIPTION

For MonoLine Track Section. Replaces the MLE end cap supplied with MonoLine Track.

7/8" Height 11/16" Length

ORDERING INFORMATION

| Series | Hardware Finish |
|----------------------|-------------------------|
| <input type="text"/> | <input type="text"/> |
| MLE | STN Satin Nickel |

Ordering Example: MLE STN

MLJ1 MonoLine Conductive Straight Joiner



PRODUCT DESCRIPTION

Mechanically joins and continues power from one track section to another. 20 amp max. Adds 1/2" length between track sections.

1-1/4" Height 1-7/8" Length

ORDERING INFORMATION

| Series | Hardware Finish |
|----------------------|-------------------------|
| <input type="text"/> | <input type="text"/> |
| MLJ1 | STN Satin Nickel |

Ordering Example: MLJ1 STN

MLJ2 MonoLine Non-Conductive Straight Joiner



PRODUCT DESCRIPTION

Mechanically joins one track section to another. Adds 1/2" length between track sections.

1-1/4" Height 1-7/8" Length

ORDERING INFORMATION

| Series | Hardware Finish |
|----------------------|-------------------------|
| <input type="text"/> | <input type="text"/> |
| MLJ2 | STN Satin Nickel |

Ordering Example: MLJ2 STN

MonoLine system is UL listed for use in the U.S. and Canada.

MonoLine®

Line Voltage Flexible Track SYSTEM COMPONENTS

MLJ3 MonoLine Conductive Flexible Joiner



PRODUCT DESCRIPTION

Joins two track sections at various angles. Continues power from one track section to another. 20 amp max.

1-1/4" Height 8-1/8" Length

ORDERING INFORMATION

| Series | Hardware Finish |
|----------------------|----------------------|
| <input type="text"/> | <input type="text"/> |
| MLJ3 | STN Satin Nickel |

Ordering Example: MLJ3 STN

MLJ6 MonoLine Conductive "T" Joiner



PRODUCT DESCRIPTION

Mechanically connects and continues power at the junction of three track sections to form a "T". 20 amp max. Adds approximately 1-1/2" length to each track from intersection point

1-1/4" Height 4" Length (max.)

ORDERING INFORMATION

| Series | Hardware Finish |
|----------------------|----------------------|
| <input type="text"/> | <input type="text"/> |
| MLJ6 | STN Satin Nickel |

Ordering Example: MLJ6 STN

MLSST MonoLine Standard Stem Support for T-Bar Ceilings



PRODUCT DESCRIPTION

Supports MonoLine at standard system heights. Order "RSE" Support Extensions to modify length if necessary.

ORDERING INFORMATION

| Series | Length | Hardware Finish |
|----------------------|---------------------------|----------------------|
| <input type="text"/> | <input type="text"/> | <input type="text"/> |
| MLSST | 5IN 5 Inch Nominal Length | STN Satin Nickel |

Ordering Example: MLSST 5IN STN

MLJ4 MonoLine Conductive Hinged "L" Joiner



PRODUCT DESCRIPTION

Adjusts from straight to 90° angle. Mechanically joins and continues power from one track section to another. 20 amp max.

1-1/4" Height 4" Length (max.)

ORDERING INFORMATION

| Series | Hardware Finish |
|----------------------|----------------------|
| <input type="text"/> | <input type="text"/> |
| MLJ4 | STN Satin Nickel |

Ordering Example: MLJ4 STN

MLSSR MonoLine Standard Stem Support for Rigid Ceilings



PRODUCT DESCRIPTION

Supports MonoLine at standard system heights. Order "RSE" Support Extensions to modify length if necessary.

ORDERING INFORMATION

| Series | Length | Hardware Finish |
|----------------------|---|----------------------|
| <input type="text"/> | <input type="text"/> | <input type="text"/> |
| MLSSR | 5IN 5 Inch Nominal Length 12IN 12 Inch Nominal Length 24IN 24 Inch Nominal Length 36IN 36 Inch Nominal Length 48IN 48 Inch Nominal Length | STN Satin Nickel |

Ordering Example: MLSSR 12IN STN

MLS3 MonoLine Cable Support



PRODUCT DESCRIPTION

Single screw mounting to ceiling. 12' aircraft cable. Easily adjusts with set screw.

12' Height

ORDERING INFORMATION

| Series | Hardware Finish |
|----------------------|----------------------|
| <input type="text"/> | <input type="text"/> |
| MLS3 | STN Satin Nickel |

Ordering Example: MLS3 STN

MonoLine system is UL listed for use in the U.S. and Canada.

MonoLine®

Line Voltage Flexible Track SYSTEM COMPONENTS

MLS10 MonoLine Conductive Connecting Support for Rigid Ceilings

PRODUCT DESCRIPTION

Supports MonoLine at standard 5" system height. Mechanically joins and continues power from one track section to another. 20 amp max. Adds 1/2" length between track sections. Order "RSE" Support Extensions to modify length if necessary.

5-1/4" Overall Height 1-7/8" Length

ORDERING INFORMATION

| Series | Hardware Finish |
|----------------------|----------------------|
| <input type="text"/> | <input type="text"/> |
| MLS10 | STN Satin Nickel |

Ordering Example: MLS10 STN



MLS11 MonoLine Non-Conductive Connecting Support for Rigid Ceilings

PRODUCT DESCRIPTION

Supports MonoLine at standard 5" system height. Mechanically joins one track section to another. Adds 1/2" length between track sections. Order "RSE" Support Extensions to modify length if necessary.

5-1/4" Overall Height 1-7/8" Length

ORDERING INFORMATION

| Series | Hardware Finish |
|----------------------|----------------------|
| <input type="text"/> | <input type="text"/> |
| MLS11 | STN Satin Nickel |

Ordering Example: MLS11 STN



MLS14 MonoLine Conductive Hinged "L" Joiner/Support

PRODUCT DESCRIPTION

Supports MonoLine at standard 5" system height. Adjusts from straight to 90° angle. Mechanically connects and continues power from one section track to another. 20 amp max. Adds approximately 1-1/2" length to each track from intersection point.

5-1/4" Overall Height 4" Length (max.)

ORDERING INFORMATION

| Series | Hardware Finish |
|----------------------|----------------------|
| <input type="text"/> | <input type="text"/> |
| MLS14 | STN Satin Nickel |

Ordering Example: MLS14 STN



MLS16 MonoLine Conductive "T" Joiner/Support

PRODUCT DESCRIPTION

Supports MonoLine at standard 5" system height. Mechanically connects and continues power at the junction of three track sections to form a "T". 20 amp max. Adds approximately 1-1/2" length to each track from intersection point.

5-1/4" Overall Height 4" Length (max.)

ORDERING INFORMATION

| Series | Hardware Finish |
|----------------------|----------------------|
| <input type="text"/> | <input type="text"/> |
| MLS16 | STN Satin Nickel |

Ordering Example: MLS16 STN



MLS30 MonoLine Conductive Connecting Cable Support

PRODUCT DESCRIPTION

Single screw mounting to ceiling. 12' aircraft cable. Mechanically joins and continues power from one track section to another. 20 amp max. Adds 1/2" length between track sections. Easily adjusts with set screw.

12' Height

ORDERING INFORMATION

| Series | Hardware Finish |
|----------------------|----------------------|
| <input type="text"/> | <input type="text"/> |
| MLS30 | STN Satin Nickel |

Ordering Example: MLS30 STN



MLS31 MonoLine Non-Conductive Connecting Cable Support

PRODUCT DESCRIPTION

Single screw mounting to ceiling. 12' aircraft cable. Mechanically joins one track section to another. Adds 1/2" length between track sections. Easily adjusts with set screw.

12' Height

ORDERING INFORMATION

| Series | Hardware Finish |
|----------------------|----------------------|
| <input type="text"/> | <input type="text"/> |
| MLS31 | STN Satin Nickel |

Ordering Example: MLS31 STN



MonoLine system is UL listed for use in the U.S. and Canada.

MonoLine®

Line Voltage Flexible Track SYSTEM COMPONENTS

MLS50 MonoLine Sloped Ceiling Support

PRODUCT DESCRIPTION

Enables MonoLine to suspend properly on a sloped ceiling. Standard length is 12". Order "RSE" Support Extensions to modify length if necessary. Custom lengths can be ordered pre-assembled – consult factory.

12" Height

ORDERING INFORMATION

| Series | Hardware Finish |
|----------------------|----------------------|
| <input type="text"/> | <input type="text"/> |

MLS50 STN Satin Nickel

Ordering Example: MLS50 STN



MLS61 MonoLine Wall Support

PRODUCT DESCRIPTION

Supports MonoLine at standard 24" distance from wall. Distance from wall may be shortened in the field if desired. Includes aircraft cable support and mounting hardware.

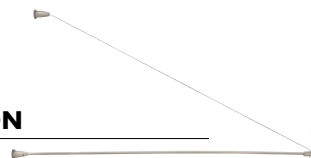
4-1/2" Diameter Canopy 24" Distance From Wall

ORDERING INFORMATION

| Series | Hardware Finish |
|----------------------|----------------------|
| <input type="text"/> | <input type="text"/> |

MLS61 STN Satin Nickel

Ordering Example: MLS61 STN



MLP165 MonoLine Conductive "L" Wall Feed

PRODUCT DESCRIPTION

Supports and feeds MonoLine at standard 24" distance from wall. Adjusts from straight to 90° angle. Mechanically connects and continues power from wall feed to track section. Distance from wall may be shortened in the field if desired. Includes aircraft cable support and mounting hardware. 20 amp max. Adds approximately 1-1/2" length to track from intersection point.

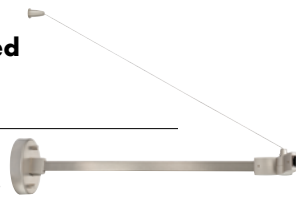
4-1/2" Diameter Canopy 24" Distance From Wall

ORDERING INFORMATION

| Series | Hardware Finish |
|----------------------|----------------------|
| <input type="text"/> | <input type="text"/> |

MLP165 STN Satin Nickel

Ordering Example: MLP165 STN



MLP166 MonoLine Conductive "T" Wall Feed

PRODUCT DESCRIPTION

Supports and feeds MonoLine at standard 24" distance from wall. Mechanically connects and continues power at the junction of two track sections to form a "T". Distance from wall may be shortened in the field if desired. Includes aircraft cable support and mounting hardware. 20 amp max. Adds approximately 1-1/2" length to track from intersection point.

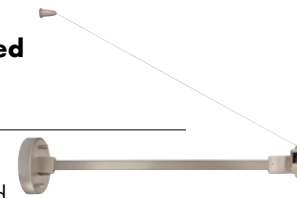
4-1/2" Diameter Canopy 24" Distance From Wall

ORDERING INFORMATION

| Series | Hardware Finish |
|----------------------|----------------------|
| <input type="text"/> | <input type="text"/> |

MLP166 STN Satin Nickel

Ordering Example: MLP166 STN



MLS64 MonoLine Wall End Support

PRODUCT DESCRIPTION

Supports MonoLine termination to a perpendicular wall.

4-1/2" Diameter Canopy

ORDERING INFORMATION

| Series | Hardware Finish |
|----------------------|----------------------|
| <input type="text"/> | <input type="text"/> |

MLS64 STN Satin Nickel

Ordering Example: MLS64 STN



MLP164 MonoLine Wall End Power Feed

PRODUCT DESCRIPTION

Mounts over J-box. Allows end feed from wall. 20 amp max.

4-1/2" Diameter Canopy

ORDERING INFORMATION

| Series | Hardware Finish |
|----------------------|----------------------|
| <input type="text"/> | <input type="text"/> |

MLP164 STN Satin Nickel

Ordering Example: MLP164 STN



MonoLine system is UL listed for use in the U.S. and Canada.

MonoLine®

Line Voltage Flexible Track SYSTEM COMPONENTS

MLP104 MonoLine 4 Foot Floating Power Feed

PRODUCT DESCRIPTION

Powers system at any point along the track. Flexible cable shield protects wiring. Mounts over J-Box. Field cuttable to length. 20 amp max.

48" Height 4-1/2" Diameter Canopy

ORDERING INFORMATION

| Series | Hardware Finish |
|----------------------|----------------------|
| <input type="text"/> | <input type="text"/> |

MLP104 STN Satin Nickel

Ordering Example: MLP104 STN



MLP112 MonoLine 12 Foot Floating Power Feed

PRODUCT DESCRIPTION

Powers system at any point along the track. Flexible cable shield protects wiring. Mounts over J-Box. Field cuttable to length. 20 amp max.

144" Height 4-1/2" Diameter Canopy

ORDERING INFORMATION

| Series | Hardware Finish |
|----------------------|----------------------|
| <input type="text"/> | <input type="text"/> |

MLP112 STN Satin Nickel

Ordering Example: MLP112 STN



MLP1 MonoLine Long Stem Power Feeds

PRODUCT DESCRIPTION

Supports and feeds track at chosen offset. Mounts over J-Box. Field cuttable to length. 20 amp max.

4-1/2" Diameter Canopy

ORDERING INFORMATION

| Series | Length | Hardware Finish |
|----------------------|----------------------|----------------------|
| <input type="text"/> | <input type="text"/> | <input type="text"/> |

| | | | |
|-------------|-------------|------------------------|-------------------------|
| MLP1 | 5IN | 5 Inch Nominal Length | STN Satin Nickel |
| | 12IN | 12 Inch Nominal Length | |
| | 24IN | 24 Inch Nominal Length | |
| | 36IN | 36 Inch Nominal Length | |
| | 48IN | 48 Inch Nominal Length | |

Ordering Example: MLP1 24IN STN



MLP150 MonoLine Sloped Ceiling Power Feed

PRODUCT DESCRIPTION

12" length—field cuttable. 20 amp max. Mounts over J-Box. Can be extended up to 48" with MLF-EXT. (Order separately).

12" Height 4-1/2" Diameter Canopy

ORDERING INFORMATION

| Series | Hardware Finish |
|----------------------|----------------------|
| <input type="text"/> | <input type="text"/> |

MLP150 STN Satin Nickel

Ordering Example: MLP150 STN



MonoLine system is UL listed for use in the U.S. and Canada.

MonoLine®

Line Voltage Flexible Track SYSTEM COMPONENTS

MLP1J1 MonoLine Conductive Stem Mounted End Feeds



PRODUCT DESCRIPTION

Supports and feeds MonoLine from end of track. Height of stem is specifiable from 2" to 48" in defined lengths. Includes mounting canopy, stem and feed connector. 20 amp max. Adds approximately 1-1/2" length to track from intersection point.

4-1/2" Diameter Canopy

ORDERING INFORMATION

| Series | Length | Hardware Finish |
|----------------------|--|-------------------------|
| <input type="text"/> | <input type="text"/> | <input type="text"/> |
| MLP1J1 | 2IN 2 Inch Nominal Length 5IN 5 Inch Nominal Length 12IN 12 Inch Nominal Length 24IN 24 Inch Nominal Length 36IN 36 Inch Nominal Length 48IN 48 Inch Nominal Length | STN Satin Nickel |

Ordering Example: MLP1J1 12IN STN

MLP1J4 MonoLine Conductive Stem Mounted Hinged "L" Joiner/Feeds



PRODUCT DESCRIPTION

Supports, joins and feeds MonoLine at intersection of track. Provides power to track in both directions (same electrical circuit). Adjusts from straight to 90° angle. Height of stem is specifiable from 2" to 48" in defined lengths. Includes mounting canopy, stem and joiner/feed connector. 20 amp max. Adds approximately 1-1/2" length to each track from intersection point.

4-1/2" Diameter Canopy

ORDERING INFORMATION

| Series | Length | Hardware Finish |
|----------------------|--|-------------------------|
| <input type="text"/> | <input type="text"/> | <input type="text"/> |
| MLP1J4 | 2IN 2 Inch Nominal Length 5IN 5 Inch Nominal Length 12IN 12 Inch Nominal Length 24IN 24 Inch Nominal Length 36IN 36 Inch Nominal Length 48IN 48 Inch Nominal Length | STN Satin Nickel |

Ordering Example: MLP1J4 12IN STN

MLTA MonoLine Quick Jack Transformer Adapter and LED-Compatible Quick Jack Transformer Adapter



PRODUCT DESCRIPTION

12V, 75W electronic transformer. For all incandescent fixtures/pendants using the Quick Jack connector.

12V, 60W electronic transformer. For all LED fixtures/pendants using the Quick Jack connector. May also be used with incandescent fixtures.

4-5/16" Overall Height 2-1/16" Width

ORDERING INFORMATION

| Series | Mounting Adapter | LED Compatibility | Wattage Rating | Hardware Finish |
|----------------------|------------------------------|---------------------------|--|-------------------------|
| <input type="text"/> | <input type="text"/> | <input type="text"/> | <input type="text"/> | <input type="text"/> |
| MLTA | QJ Quick Jack Adapter | LED LED Compatible | 60W 60W Max. Rating 75W 75W Max. Rating | STN Satin Nickel |

Ordering Examples: MLTA QJ 75W STN, MLTA QJ LED 60W STN

MonoLine system is UL listed for use in the U.S. and Canada.

MonoLine®

Line Voltage Flexible Track SYSTEM COMPONENTS

RSE MonoLine Support Extensions

PRODUCT DESCRIPTION

Replaces shorter standard stems in MLSSR, MLSST, MLS10, MLS11, MLS14, MLS16 and MLS50 Supports to modify track displacement from ceiling up to 48" max. Field cuttable.

ORDERING INFORMATION

| Series | Length | Hardware Finish |
|----------------------|--|-------------------------|
| <input type="text"/> | <input type="text"/> | <input type="text"/> |
| RSE | 12IN 12 Inch Nominal Length 24IN 24 Inch Nominal Length 36IN 36 Inch Nominal Length 48IN 48 Inch Nominal Length | STN Satin Nickel |

Ordering Example: RSE 36IN STN

MLFEXT Power Feed Extensions

PRODUCT DESCRIPTION

Replaces standard stems in MLP1 and MLP150 Power Feeds to increase or reduce track displacement from ceiling. Field cuttable.

ORDERING INFORMATION

| Series | Length | Hardware Finish |
|----------------------|--|-------------------------|
| <input type="text"/> | <input type="text"/> | <input type="text"/> |
| MLFEXT | 12IN 12 Inch Nominal Length 24IN 24 Inch Nominal Length 36IN 36 Inch Nominal Length 48IN 48 Inch Nominal Length | STN Satin Nickel |

Ordering Example: MLFEXT 48IN STN

JLGB100 MonoLine/Flex 12 Portable Bending Machine

PRODUCT DESCRIPTION

Portable bending machine for both MonoLine and Flex 12 flexible track. MonoLine may be bent to a minimum radius of 18". Conveniently clamps to a rigid work surface and easily makes smooth, precise, reliable bends. Provided with a durable, hard-shell carrying case.



ORDERING INFORMATION

Series

JLGB100

Ordering Example: JLGB100

MonoLine system is UL listed for use in the U.S. and Canada.