



TRAC-MASTER®

Avant Garde

MINI-PAR SERIES

T420, T421, T423, T425 and T427

Project: _____

Fixture Type: _____

Location: _____

Contact/Phone: _____

PRODUCT DESCRIPTION

Designed especially for halogen PAR lamps. The Mini-PAR's compact shape and slotted yoke make it ideal for today's high styled applications.

Construction Drawn steel housing with die-formed steel yokes.

Lampholder Medium base porcelain with nickel plated copper screw shell.

Aiming 90° vertical aiming capability and 358° rotation • Two locking screws provided.

Adapter Copper alloy contacts provide precise spring action - no arcing and will not take a set • True, positive electrical ground • On/off switch included • Patented embossed polarity arrows on bottom of adapter • Spring-loaded positive latch with embossed polarity arrows secures trac light to trac • Two-position power contact provided for two-circuit application.

Labels UL listed, CSA certified.

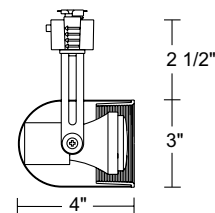
Specifications subject to change without notice.



Line Voltage PAR16

| Catalog Number | Baffle | Finish | Lamp |
|----------------|--------|--------|-----------|
| T420 BLB WH | Black | White | 60W PAR16 |
| T420 BLB BL | Black | Black | 60W PAR16 |
| T420 WHB WH | White | White | 60W PAR16 |

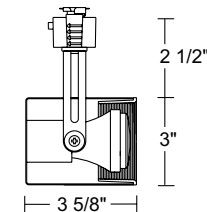
Mounting accessories can be found on specification sheet [D1.2.0](#).



Line Voltage PAR16

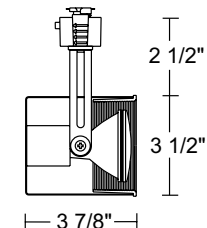
| Catalog Number | Baffle | Finish | Lamp |
|----------------|--------|--------------|-----------|
| T421 BLB WH | Black | White | 60W PAR16 |
| T421 BLB BL | Black | Black | 60W PAR16 |
| T421 BLB SC | Black | Satin Chrome | 60W PAR16 |
| T421 WHB WH | White | White | 60W PAR16 |

Mounting accessories can be found on specification sheet [D1.2.0](#).



Line Voltage PAR20

| Catalog Number | Baffle | Finish | Lamp |
|----------------|--------|--------------|-----------|
| T423 BLB WH | Black | White | 50W PAR20 |
| T423 BLB BL | Black | Black | 50W PAR20 |
| T423 BLB SC | Black | Satin Chrome | 50W PAR20 |
| T423 WHB WH | White | White | 50W PAR20 |



ACCESSORIES

| Cat. No. | Description | Cat. No. | Description |
|-------------|----------------------------------|-------------------|--|
| HCLBL 375 | Hexcell Louver - Black | UVF 375 | UV Filter |
| CCLBL 375 | Cube Cell Louver - Black | SOLITE 375 | Uniformity Lens (Solite) |
| SNOOTBL 375 | Snoot - Black | PRISM 375 | Prismatic Spread Glass Lens |
| CGF 375 | Color Glass Filter | LSPREAD 375 | Linear Spread Glass Lens |
| DCCF 375 | Dichroic Color Correction Filter | T56OBL | 3-1/2" Diameter Accessory Holder - Black |
| DGF 375 | Dichroic Glass Filter | T71BL | 3-3/4" Diameter Barn Doors - Black † |
| DIFF 375 | Diffusion Glass Lens | T40N ¹ | Monopoint |

See specification sheet [D1.2.2](#) for details. Other accessories can be found on specification sheet [D1.2.0](#).

† Barn Doors accept Color Filters, Lenses, Snoot and Louvers.

Notes:

1 Add finish code to complete catalog number (Example: T40N WH).

TRAC-MASTER®

Avant Garde

MINI-PAR SERIES**T420, T421, T423, T425 and T427****PRODUCT DESCRIPTION**

Designed especially for halogen PAR lamps. The Mini-PAR's compact shape and slotted yoke make it ideal for today's high styled applications.

Construction Drawn steel housing with die-formed steel yokes.

Lampholder Medium base porcelain with nickel plated copper screw shell.

Aiming 90° vertical aiming capability and 358° rotation • Two locking screws provided.

Adapter Copper alloy contacts provide precise spring action - no arcing and will not take a set • True, positive electrical ground • On/off switch included • Patented embossed polarity arrows on bottom of adapter • Spring-loaded positive latch with embossed polarity arrows secures trac light to trac • Two-position power contact provided for two-circuit application.

Labels UL listed, CSA certified.

Specifications subject to change without notice.

Line Voltage PAR30

| Catalog Number | Baffle | Finish | Lamp |
|--------------------|--------|--------------|-----------|
| T425 BLB WH | Black | White | 75W PAR30 |
| T425 BLB BL | Black | Black | 75W PAR30 |
| T425 BLB SC | Black | Satin Chrome | 75W PAR30 |
| T425 WHB WH | White | White | 75W PAR30 |

ACCESSORIES

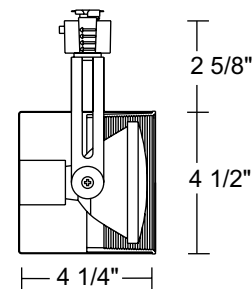
| Cat. No. | Description | Cat. No. | Description |
|--------------------|----------------------------------|-------------------------|--|
| HCLBL 469 | Hexcell Louver - Black | UVF 469 | UV Filter |
| CCLBL 469 | Cube Cell Louver - Black | SOLITE 469 | Uniformity Lens (Solite) |
| SNOOTBL 469 | Snoot - Black | PRISM 469 | Prismatic Spread Glass Lens |
| CGF 469 | Color Glass Filter | LSPREAD 469 | Linear Spread Glass Lens |
| DCCF 469 | Dichroic Color Correction Filter | T57OBL | 4-11/16" Diameter Accessory Holder - Black |
| DGF 469 | Dichroic Glass Filter | T72BL | 4-11/16" Diameter Barn Doors - Black † |
| DIFF 469 | Diffusion Glass Lens | T40N¹ | Monopoint |

See specification sheet [D1.2.2](#) for details. Other accessories can be found on specification sheet [D1.2.0](#).

† Barn Doors accept Color Filters, Lenses, Snoot and Louvers.

Notes:

1 Add finish code to complete catalog number (Example: T40N WH).

**Line Voltage PAR38**

| Catalog Number | Baffle | Finish | Lamp |
|--------------------|--------|--------|------------|
| T427 BLB BL | Black | Black | 250W PAR38 |
| T427 WHB WH | White | White | 250W PAR38 |

ACCESSORIES

| Cat. No. | Description | Cat. No. | Description |
|------------------|--|-------------------------|--|
| CGF 550 | Color Glass Filter | T73BL | 4-11/16" Diameter Barn Doors - Black † |
| CCLBL 550 | Cube Cell Louver - Black | T73WH | 4-11/16" Diameter Barn Doors - White † |
| T58OBL | 5-1/2" Diameter Accessory Holder - Black | T40N¹ | Monopoint |

See specification sheet [D1.2.2](#) for details. Other accessories can be found on specification sheet [D1.2.0](#).

† Barn Doors accept Color Filters, Lenses, Snoot and Louvers.

Notes:

1 Add finish code to complete catalog number (Example: T40N WH).

