



Friendly Service... Powerful Solutions

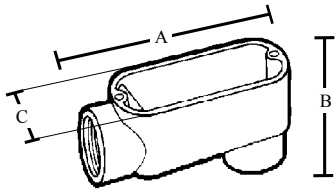
Topaz Specification Sheet

Description: Rigid Conduit Bodies - Rigid LB Type

Standard Material: Aluminum Die Cast Copper Free

Features: Tapered threaded hubs - NPT
Suitable for use in concrete.
Wet Location

Application: To provide access to conductors for pulling, slicing and maintenance



E170258

TOPAZ CAT #	A	B	C	Max No. Conductors
LB1	4.295	2.150	1.330	1 #6AWG
LB2	5.090	2.430	1.540	2 #6AWG
LB3	5.915	2.765	1.740	3 #6AWG
LB4	7.894	3.665	2.490	3 #2AWG
LB5	7.894	3.665	2.490	3 #2AWG
LB6	10.134	4.275	3.100	3 #2/OAWG
LB7	12.500	5.437	4.450	3 #2/OAWG
LB8	12.500	5.675	4.450	3 #4/OAWG
LB9	15.500	6.922	5.500	3 #500MCM
LB10	15.500	6.922	5.500	4 #500MCM

TOPAZ CAT #	UPC#	SIZE	UNIT CTN	SHIP CASE	WT/ CASE
LB1	20840	1/2"	10	100	28
LB2	20850	3/4"	10	50	19
LB3	20860	1"	5	25	18
LB4	20870	1 1/4"	2	10	13
LB5	20880	1 1/2"	2	10	14
LB6	20890	2"	1	5	13
LB7	20900	2 1/2"	-	1	6
LB8	20910	3"	-	1	6
LB9	20920	3 1/2"	-	1	8
LB10	20930	4"	-	1	8

Approved by Quality Control: John Cavalieri



NEW YORK
925 Waverly Avenue
Holtsville, NY 11742
800-666-2852
Fax: 800-333-3488

CALIFORNIA
225 Parkside Drive
San Fernando, CA 91340
888-551-2852
Fax: 888-690-2852

FLORIDA
2020 West 26th Street
Jacksonville, FL 32209
800-666-2852
Fax: 800-333-3488



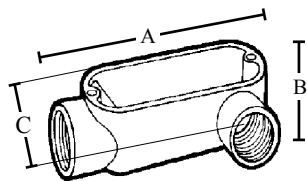
Topaz Specification Sheet

Description: Rigid Conduit Bodies - Rigid LL Type

Standard Material: Aluminum Die Cast Copper Free

Features: Tapered threaded hubs - NPT
Suitable for use in concrete.
Wet Location

Application: To provide access to conductors for pulling, slicing and maintenance



E170258

TOPAZ CAT #	A	B	C	Max No. Conductors
LL1	4.295	1.370	2.030	1 #6AWG
LL2	5.090	1.625	2.330	2 #6AWG
LL3	5.915	1.900	2.650	3 #6AWG
LL4	7.894	2.770	3.385	3 #2AWG
LL5	7.894	2.770	3.385	3 #2AWG
LL6	10.134	3.335	3.810	3 #2/OAWG
LL7	13.000	4.063	5.709	3 #4/OAWG
LL8	12.750	4.682	5.506	3 #250MCM
LL9	15.500	5.452	6.171	3 #350MCM
LL10	15.500	5.452	6.171	4 #350MCM

TOPAZ CAT #	UPC#	SIZE	UNIT CTN	SHIP CASE	WT/ CASE
LL1	21040	1/2"	10	100	28
LL2	21050	3/4"	10	50	23
LL3	21060	1"	5	25	18
LL4	21070	1 1/4"	2	10	14
LL5	21080	1 1/2"	2	10	16
LL6	21090	2"	1	5	14
LL7	21100	2 1/2"	-	1	6
LL8	21110	3"	-	1	6
LL9	21120	3 1/2"	-	1	8
LL10	21130	4"	-	1	8

Approved by Quality Control: John Cavalieri



NEW YORK
925 Waverly Avenue
Holtsville, NY 11742
800-666-2852
Fax: 800-333-3488

CALIFORNIA
225 Parkside Drive
San Fernando, CA 91340
888-551-2852
Fax: 888-690-2852

FLORIDA
2020 West 26th Street
Jacksonville, FL 32209
800-666-2852
Fax: 800-333-3488



Friendly Service ... Powerful Solutions

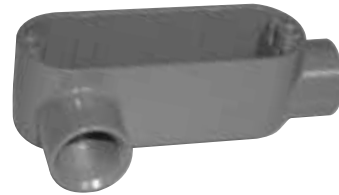
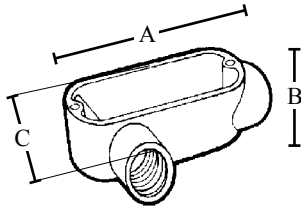
Topaz Specification Sheet

Description: Rigid Conduit Bodies - Rigid LR Type

Standard Material: Aluminum Die Cast Copper Free

Features: Tapered threaded hubs - NPT
Suitable for use in concrete.
Wet Location

Application: To provide access to conductors for pulling, slicing and maintenance



TOPAZ CAT #	A	B	C	Max No. Conductors
LR1	4.295	1.370	2.030	1 #6AWG
LR2	5.090	1.625	2.330	2 #6AWG
LR3	5.915	1.900	2.650	3 #6AWG
LR4	7.894	2.770	3.385	3 #2AWG
LR5	7.894	2.770	3.385	3 #2AWG
LR6	10.134	3.335	3.810	3 #2/OAWG
LR7	13.500	4.063	5.709	3 #4/OAWG
LR8	12.750	4.682	5.506	3 #250MCM
LR9	15.500	5.452	6.171	3 #350MCM
LR10	15.500	5.452	6.171	4 #350MCM

TOPAZ CAT #	UPC#	SIZE	UNIT CTN	SHIP CASE	WT/ CASE
LR1	21240	1/2"	10	100	29
LR2	21250	3/4"	10	50	24
LR3	21260	1"	5	25	19
LR4	21270	1 1/4"	2	10	14
LR5	21280	1 1/2"	2	10	17
LR6	21290	2"	1	5	14
LR7	21300	2 1/2"	-	1	6
LR8	21310	3"	-	1	6
LR9	21320	3 1/2"	-	1	8
LR10	21330	4"	-	1	8

Approved by Quality Control: John Cavalieri



NEW YORK
925 Waverly Avenue
Holtsville, NY 11742
800-666-2852
Fax: 800-333-3488

CALIFORNIA
225 Parkside Drive
San Fernando, CA 91340
888-551-2852
Fax: 888-690-2852

FLORIDA
2020 West 26th Street
Jacksonville, FL 32209
800-666-2852
Fax: 800-333-3488



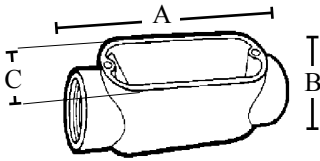
Topaz Specification Sheet

Description: Rigid Conduit Bodies - Rigid C Type

Standard Material: Aluminum Die Cast Copper Free

Features: Tapered threaded hubs - NPT
Suitable for use in concrete.
Wet Location

Application: To provide access to conductors for pulling, slicing and maintenance



E170258

TOPAZ CAT #	A	B	C	Max No. Conductors
C1	4.720	1.370	1.330	1 #6AWG
C2	5.570	1.625	1.540	2 #6AWG
C3	6.460	1.900	1.740	3 #6AWG
C4	8.528	2.770	2.490	3 #2AWG
C5	8.528	2.770	2.490	3 #2AWG
C6	10.831	3.335	3.100	3 #2/OAWG
C7	13.500	4.060	4.450	3 #4/OAWG
C8	13.000	4.685	4.450	3 #250MCM
C9	15.937	5.450	5.500	3 #350MCM
C10	15.937	5.450	5.500	4 #350MCM

TOPAZ CAT #	UPC#	SIZE	UNIT CTN	SHIP CASE	WT/ CASE
C1	19900	1/2"	10	100	24
C2	19910	3/4"	10	50	21
C3	19920	1"	5	25	15
C4	19930	1 1/4"	2	10	15
C5	19940	1 1/2"	2	10	17
C6	19950	2"	1	5	13
C7	19960	2 1/2"	-	1	6
C8	19970	3"	-	1	6
C9	19980	3 1/2"	-	1	8
C10	19990	4"	-	1	8

Approved by Quality Control: John Cavalieri



NEW YORK
925 Waverly Avenue
Holtsville, NY 11742
800-666-2852
Fax: 800-333-3488

CALIFORNIA
225 Parkside Drive
San Fernando, CA 91340
888-551-2852
Fax: 888-690-2852

FLORIDA
2020 West 26th Street
Jacksonville, FL 32209
800-666-2852
Fax: 800-333-3488



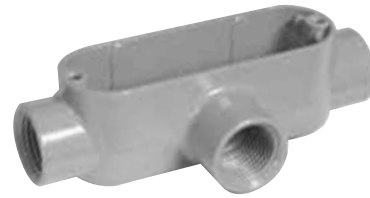
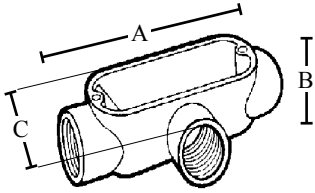
Topaz Specification Sheet

Description: Rigid Conduit Bodies - Rigid T Type

Standard Material: Aluminum Die Cast Copper Free

Features: Tapered threaded hubs - NPT
Suitable for use in concrete.
Wet Location

Application: To provide access to conductors for pulling, slicing and maintenance



TOPAZ CAT #	A	B	C	Max No. Conductors
T1	4.720	1.370	2.030	1 #6AWG
T2	5.570	1.625	2.335	2 #6AWG
T3	6.460	1.900	2.705	3 #6AWG
T4	8.528	2.770	3.630	3 #2AWG
T5	8.528	2.770	3.630	3 #2AWG
T6	10.831	3.335	3.980	3 #2/OAWG
T7	13.500	4.060	5.825	3 #4/OAWG
T8	13.000	4.685	5.825	3 #250MCM
T9	15.937	5.450	7.060	3 #350MCM
T10	15.937	5.450	7.060	4 #350MCM

TOPAZ CAT #	UPC#	SIZE	UNIT CTN	SHIP CASE	WT/ CASE
T1	21730	1/2"	10	100	32
T2	21740	3/4"	10	50	26
T3	21750	1"	5	25	18
T4	21760	1 1/4"	2	10	17
T5	21770	1 1/2"	2	10	19
T6	21780	2"	-	2	5
T7	21790	2 1/2"	-	1	7
T8	21800	3"	-	1	7
T9	21810	3 1/2"	-	1	9
T10	21820	4"	-	1	9

Approved by Quality Control: John Cavalieri



NEW YORK
925 Waverly Avenue
Holtsville, NY 11742
800-666-2852
Fax: 800-333-3488

CALIFORNIA
225 Parkside Drive
San Fernando, CA 91340
888-551-2852
Fax: 888-690-2852

FLORIDA
2020 West 26th Street
Jacksonville, FL 32209
800-666-2852
Fax: 800-333-3488