

## application

- Philips Capri 6" high efficiency CFL downlight for new construction. Provides broad uniform light distribution for general illumination. Ideal for areas that require long hours of continuous operation.

## construction

- Ballast** - NE1 electronic ballast 120V, normal power factor
- Bar Hanger** - Pre-Installed BH-1 bar hangers telescope from 10.5 to 25 inches. Alignment holes to center fixture are located at 10.5" and 25" centers. Bar hanger is equipped with heavy-duty fluted nails. Interlocking support tabs provide smooth adjustment on bar hangers.
- Plaster Frame** - Precision die-stamped plaster frame of galvanized steel. Mounting frame accommodates ceiling materials from 1/2" to 1-3/8" thick.
- Reflector** - Reflectors include universal feature allowing trim to be used on Philips Lightolier CPlus Title 24 IC/AirSeal rated high efficacy compact fluorescent downlights and select Philips Lightolier incandescent 6 inch IC/AirSeal™ rated downlights.
- Baffle** - Precision spun .04 aluminum with deep grooves to reduce aperture glare. Non-reflective matte black or white finish.
- Socket** - One vertically mounted socket orients lamp at optical focal plane of reflector for precise optics.
- Junction Box** - Extra large 32 cubic inch .063" galvanized steel with snap on cover and ground wire riveted to frame. Approved for Through Branch Circuit Wiring with up to 3 #12 gauge AWG conductors. Knockouts for 1/2" and 3/4" conduit and 4 romex pry-outs with strain relief.

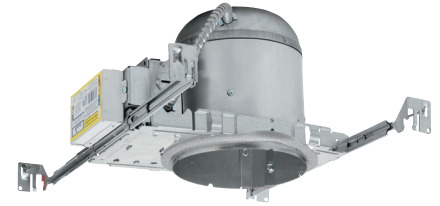
## listings

- cULus Listing - cULus Listed for damp locations and through branch wiring (4in/4 out). SHR1CW is listed for wet locations. California Title 24 Compliant.
- AirSeal™ - Luminaire is AirSeal™ rated meeting ASTM E283 limiting passage of air through housing to no more than 2.0 CFM at 75 Pascals. AirSeal™ housing meets restricted airflow requirements of Washington State Energy Code (W.S.E.C.) and International Energy Conservation Code (I.E.C.C.). Luminaire supplied with preinstalled gasket to ensure AirSeal™ installation.

PR26ASICNBNE1

## Philips Lightolier C-Plus Recessed Downlight

6" CFL CPlus Recessed AirSeal™/IC Rated Vertical-Socket Supporting Downlight

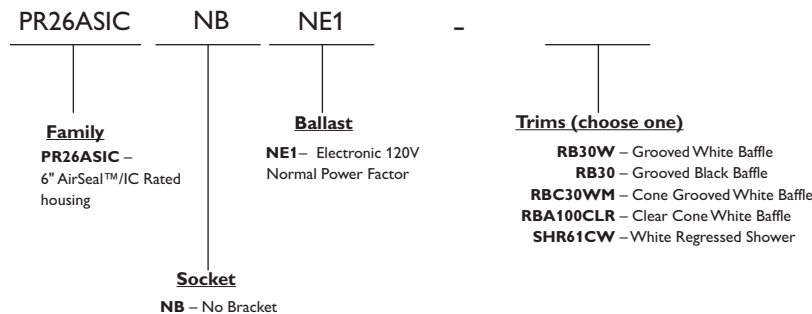


### Specifier's Reference

Project
Type
Model No.
Comments

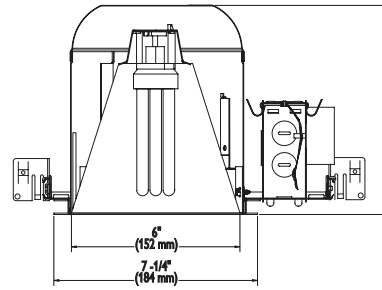
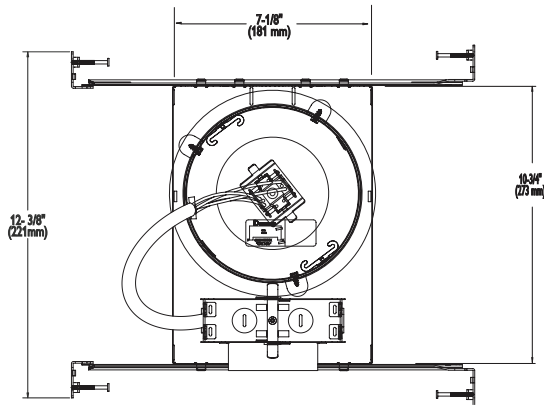


## Green Choice: PR26ASICNBNE1-RB30W



**PHILIPS**  
**LIGHTOLIER**

dimensions



trims



**RB30W** Full White Baffle  
Socket Supporting  
7-1/16" O.D. (179 mm)

26W Triple Tube



**RC30C** Clear Cone (shown)  
**RC30W** White Cone  
Socket Supporting  
7-1/16" O.D. (179 mm)

26W Triple Tube



**RBC30WM** Full White Baffle w/Torsion Springs  
Socket Supporting  
7-1/16" O.D. (179 mm)

26W Triple Tube



**RBA100CLR** Clear Cone  
Socket Supporting  
7-1/16" O.D. (179 mm)

26W Triple Tube



**SHR16IC** Regressed Glass  
Shower Light, Wet Location  
8" O.D. (203 mm)

26W Triple Tube



Some luminaires use fluorescent or high intensity discharge (HID) lamps that contain small amounts of mercury. Such lamps are labeled, "Contain Mercury" and/or the symbol "HG". Lamps that contain mercury must be disposed of in accordance with local requirements. Information regarding lamp recycling and disposal can be found at [www.lamprecycle.org](http://www.lamprecycle.org)

