

Unicode® 2 Series Push Buttons

Components for Increased Safety Enclosures

Features

- Can be equipped with up to 3 Unicode 2 Contact Blocks (UCB) Series contact blocks.
- ATEX and IECEx certified.
- TS35 rail mounted.
- Panel mounted.

Standard Materials

- Body: polyamide
- Seal: ethylene propylene diene Monomer (M-class) rubber (EPDM)

Certifications and Compliances

- Certification Type PCe
 - Gas: Zone 1 and 2
 - Conforming to ATEX 94/9/CE: 0081 Ⓢ II 2 G
 - ATEX/IEC Protection: Ex e II
 - Dust: Zone 21 and 22
 - Conforming to ATEX 94/9/CE: 0081 Ⓢ II 2 D
 - ATEX/IEC Protection: Ex tD A21
 - Surface Temperature: -40 °F/-40 °C to +140 °F/+60 °C
 - CE Declaration of Conformity: 5C242
 - ATEX Certificate: LCIE 09 ATEX 3010U
 - IEC Certificate: IECEx LCI 09.0011U
 - Other Certifications: GOST
 - Index of Protection (shock and liquid): IP66
 - Impact Resistance (shock): IK10
- Ex standards :EN/IEC 60079-0; 60079-7; 61241-0; 61241-1
- Other standards: EN/IEC 60529 (IP); 62262 (IK)



UA0GR
(rail mounted contacts)



UA0GP
(panel mounted contacts)



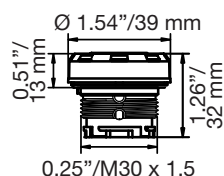
Contact Block



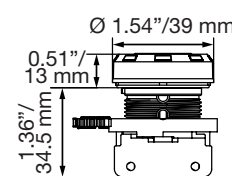
UIA08

Dimensions

Rail Mounted Contacts



Panel Mounted Contacts



	Weight in Pounds/Kilograms		Volume in ³ /dm ³		Pack	Catalog Number	
	Rail Mounted	Panel Mounted	Rail Mounted	Panel Mounted		Rail Mounted	Panel Mounted
Spring Return - Push Button (contact block to be ordered separately) <i>Legend plates, guards, blanking plugs (see Accessories page).</i>							
Red + Green	0.06/0.03	0.11/0.05	3.66/0.06	10.37/0.17	1	UA0RGR	UA0RGP
Green	0.06/0.03	0.11/0.05	3.66/0.06	10.37/0.17	1	UA0GR	UA0GP
Red	0.06/0.03	0.11/0.05	3.66/0.06	10.37/0.17	1	UA0RR	UA0RP
White	0.06/0.03	0.11/0.05	3.66/0.06	10.37/0.17	1	UA0WR	UA0WP
Blue	0.06/0.03	0.11/0.05	3.66/0.06	10.37/0.17	1	UA0BR	UA0BP
Yellow	0.06/0.03	0.11/0.05	3.66/0.06	10.37/0.17	1	UA0YR	UA0YP
1-Pole Contact Blocks							
1 x NO						UCB5R	UCB5P
1 x NC	0.071/0.032		3.66/0.06		1	UCB9R	UCB9P
Spare Parts							
Rail to panel mounted conversion adaptor	0.04/0.02		4.88/0.08		1	UPMA	
Marking	Color	Weight (kg)	Volume in ³ /dm ³	Pack	Catalog Number		
Set of Five Spare Inserts							
(unmarked)	Green	0.02/0.01	0.61/0.01	1	UIAG		
(unmarked)	Red	0.02/0.01	0.61/0.01	1	UIAR		
(unmarked)	Yellow	0.02/0.01	0.61/0.01	1	UIAY		
(unmarked)	White	0.02/0.01	0.61/0.01	1	UIAW		
(unmarked)	Blue	0.02/0.01	0.61/0.01	1	UIAB		
(unmarked)	Black	0.02/0.01	0.61/0.01	1	UIAN		
ON	Green	0.02/0.01	0.61/0.01	1	UIA01		
OFF	Red	0.02/0.01	0.61/0.01	1	UIA02		
START	Green	0.02/0.01	0.61/0.01	1	UIA03		
STOP	Red	0.02/0.01	0.61/0.01	1	UIA04		
MARCHE	Green	0.02/0.01	0.61/0.01	1	UIA05		
ARRET	Red	0.02/0.01	0.61/0.01	1	UIA06		
I	Green	0.02/0.01	0.61/0.01	1	UIA07		
O	Red	0.02/0.01	0.61/0.01	1	UIA08		

Unicode® 2 Series Mushroom Push Buttons

Components for Increased Safety Enclosures

Features

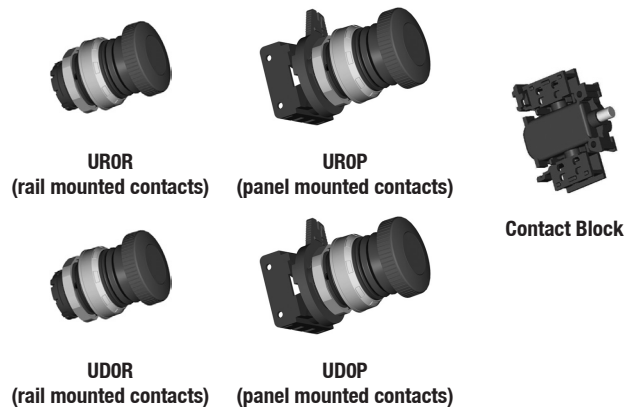
- Can be equipped with up to 3 UCB Series Contact Blocks contact blocks.
- ATEX and IECEx certified.
- TS35 rail mounted.
- Panel mounted.

Standard Materials

- Body: polyamide
- Seal: ethylene propylene diene Monomer (M-class) rubber (EPDM)

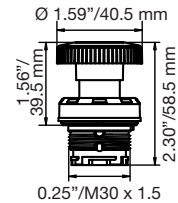
Certifications and Compliances

- Certification Type TCe
 - Gas: Zone 1 and 2
 - Conforming to ATEX 94/9/CE: 0081 II 2 G
 - ATEX/IEC Protection: Ex e II
 - Dust: Zone 21 and 22
 - Conforming to ATEX 94/9/CE: 0081 II 2 D
 - ATEX/IEC Protection: Ex tD A21
 - Surface Temperature: -40 °F/-40 °C to +140 °F/+60 °C
 - CE Declaration of Conformity: 5C242
 - ATEX Certificate: LCIE 09 ATEX 3010U
 - IEC Certificate: IECEx LCI 09.0011U
 - Other Certifications: GOST
 - Index of Protection (shock and liquid): IP66
 - Impact Resistance (shock): IK10
- Ex standards :EN/IEC 60079-0; 60079-7; 61241-0; 61241-1
- Other standards: EN/IEC 60529 (IP); 62262 (IK)

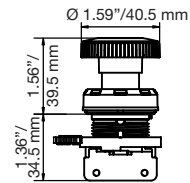


Dimensions in Inches/Millimeters

Rail Mounted Contacts



Panel Mounted Contacts



	Weight in Pounds/Kilograms		Volume in ³ /dm ³		Pack	Catalog Number	
	Rail Mounted	Panel Mounted	Rail Mounted	Panel Mounted		Rail Mounted	Panel Mounted
Spring Return Mushroom Head Push Button (contact block to be ordered separately)							
<i>Legend plates, guards, blanking plugs (see Accessories page).</i>							
Red	0.99/0.045	0.13/0.06	15.87/0.26	7.32/0.12	1	UR0R	UR0P
Black	0.99/0.045	0.13/0.06	15.87/0.26	7.32/0.12	1	UB0R	UB0P
Push-Pull Mushroom Head Push Button (contact block to be ordered separately)							
<i>Legend plates, guards, blanking plugs (see Accessories page).</i>							
Red Emergency Stop	0.99/0.045	0.13/0.06	7.32/0.12	15.87/0.26	1	UD0R	UD0P
1-Pole Contact Blocks							
1 x NO		0.071/0.032		3.66/0.06	1	UCB5R	UCB5P
1 x NC						UCB9R	UCB9P
Spare Parts							
Rail to panel mounted conversion adaptor		0.04/0.02		4.88/0.08	1	UPMA	

Unicode® 2 Series Key Release Mushroom Push Buttons

Components for Increased Safety Enclosures

Features

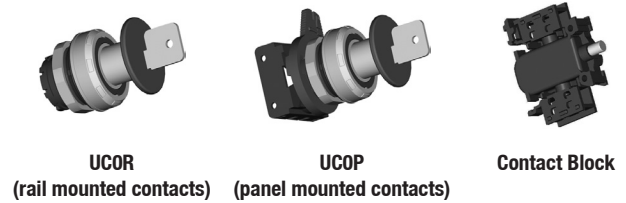
- Can be equipped with up to 2 Unicode 2 Contact Blocks (UCB) Series contact blocks.
- ATEX and IECEx certified.
- TS35 rail mounted.
- Panel mounted.

Standard Materials

- Body: thermosetting plastic
- Seal: ethylene propylene diene Monomer (M-class) rubber (EPDM)

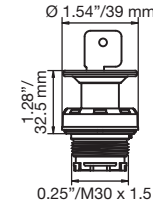
Certifications and Compliances

- Certification Type AUX
 - Gas: Zone 1 and 2
 - Conforming to ATEX 94/9/CE: 0081 Ⓢ II 2 G
 - ATEX/IEC Protection: Ex e II
 - Dust: Zone 21 and 22
 - Conforming to ATEX 94/9/CE: 0081 Ⓢ II 2 D
 - ATEX/IEC Protection: Ex tD A21
 - Surface Temperature: -4 °F/-20 °C to +158 °F/+70 °C
 - CE Declaration of Conformity: 5C206
 - ATEX Certificate: LCIE 00 ATEX 0002U
 - IEC Certificate: LCIE Ex 00.012U
 - Other Certifications: GOST
 - Index of Protection (shock and liquid): IP66
 - Impact Resistance (shock): 7 Joules
- Ex standards :EN/IEC 60079-0; 60079-7; 61241-0; 61241-1
- Other standards: EN/IEC 60529 (IP); 62262 (IK)

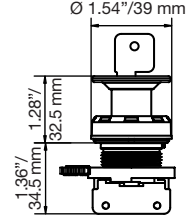


Dimensions in Inches/Millimeters

Rail Mounted Contacts



Panel Mounted Contacts



	Weight in Pounds/Kilograms		Volume in ³ /dm ³		Pack	Catalog Number	
	Rail Mounted	Panel Mounted	Rail Mounted	Panel Mounted		Rail Mounted	Panel Mounted
Key Release Mushroom Head Push Button (contact block to be ordered separately)							
<i>Legend plates, guards, blanking plugs (see Accessories page).</i>							
Red	0.183/0.085	0.212/0.096	5.49/0.09	15.26/0.25	1	UCOR	UCOP
1-Pole Contact Blocks							
1 x NO		0.071/0.032		3.66/0.06	1	UCB5R	UCB5P
1 x NC						UCB9R	UCB9P
Spare Parts							
Spare key (type 4A 185)		—		—		SK4A185	
Rail to panel mounted conversion adaptor	0.04/0.02		4.88/0.08		1	UPMA	

Unicode® 2 Series Key Momentary Push Buttons

Components for Increased Safety Enclosures

Features

- Can be equipped with up to 2 Unicode 2 Contact Blocks (UCB) Series contact blocks.
- ATEX and IECEx certified.
- TS35 rail mounted.
- Panel mounted.

Standard Materials

- Body: thermosetting plastic
- Seal: ethylene propylene diene Monomer (M-class) rubber (EPDM)

Certifications and Compliances

- Certification Type AUX
 - Gas: Zone 1 and 2
 - Conforming to ATEX 94/9/CE: 0081 Ⓢ II 2 G
 - ATEX/IEC Protection: Ex e II
 - Dust: Zone 21 and 22
 - Conforming to ATEX 94/9/CE: 0081 Ⓢ II 2 D
 - ATEX/IEC Protection: Ex tD A21
 - Surface Temperature: -4 °F/-20 °C to +158 °F/+70 °C
 - CE Declaration of Conformity: 5C206
 - ATEX Certificate: LCIE 00 ATEX 0002U
 - IEC Certificate: LCIE Ex 00.012U
 - Other Certifications: GOST
 - Index of Protection (shock and liquid): IP66
 - Impact Resistance (shock): 7 Joules
- Ex standards :EN/IEC 60079-0; 60079-7; 61241-0; 61241-1
- Other standards: EN/IEC 60529 (IP); 62262 (IK)



UE0R
(rail mounted contacts)



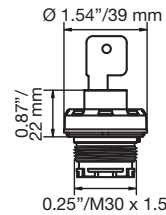
UE0P
(panel mounted contacts)



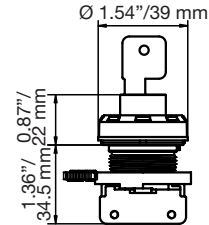
Contact Block

Dimensions in Inches/Millimeters

Rail Mounted Contacts



Panel Mounted Contacts



	Weight in Pounds/Kilograms		Volume in ³ /dm ³		Pack	Catalog Number	
	Rail Mounted	Panel Mounted	Rail Mounted	Panel Mounted		Rail Mounted	Panel Mounted
Key Momentary Push Button (contact block to be ordered separately)							
<i>Legend plates, guards, blanking plugs (see Accessories page).</i>							
Key removable in both positions	0.176/0.080	0.205/0.093	4.88/0.08	12.20/0.20	1	UE0R	UE0P
Key removable in ON positions	0.176/0.080	0.205/0.093	4.88/0.08	12.20/0.20	1	UF0R	UF0P
Key removable in OFF positions	0.176/0.080	0.205/0.093	4.88/0.08	12.20/0.20	1	UG0R	UG0P
1-Pole Contact Blocks							
1 x NO						UCB5R	UCB5P
1 x NC	0.071/0.032		3.66/0.06		1	UCB9R	UCB9P
Spare Parts							
Spare key (type 4A 185)		—		—		SK4A185	
Rail to panel mounted conversion adaptor	0.04/0.02		4.88/0.08		1	UPMA	

Unicode® 2 Series Rotary Actuators

Components for Increased Safety Enclosures

Features

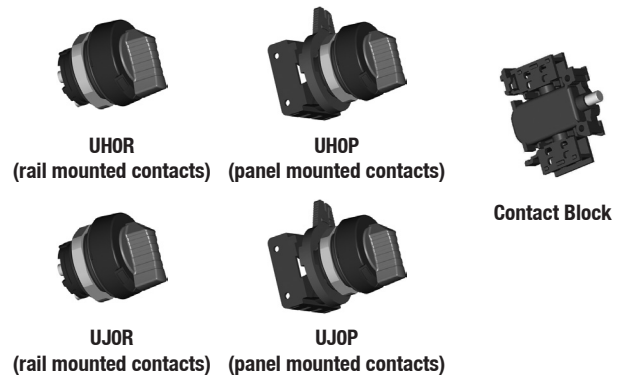
- Can be equipped with up to 2 Unicode 3 Contact Blocks (UCB) Series contact blocks.
- ATEX and IECEx certified.
- TS35 rail mounted.
- Panel mounted.

Standard Materials

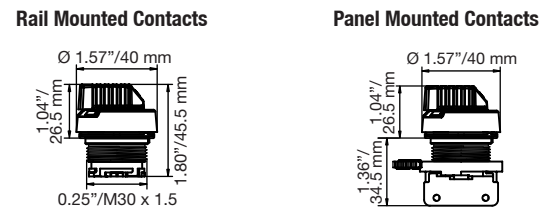
- Body: thermosetting plastic
- Seal: ethylene propylene diene Monomer (M-class) rubber (EPDM)

Certifications and Compliances

- Certification Type TCe
 - Gas: Zone 1 and 2
 - Conforming to ATEX 94/9/CE: 0081 Ⓢ II 2 G
 - ATEX/IEC Protection: Ex e II
 - Dust: Zone 21 and 22
 - Conforming to ATEX 94/9/CE: 0081 Ⓢ II 2 D
 - ATEX/IEC Protection: Ex tD A21
 - Surface Temperature: -40 °F/-40 °C to +140 °F/+60 °C
 - CE Declaration of Conformity: 5C242
 - ATEX Certificate: LCIE 09 ATEX 3010U
 - IEC Certificate: IECEx LCI 09.0011U
 - Other Certifications: GOST
 - Index of Protection (shock and liquid): IP66
 - Impact Resistance (shock): IK10
- Ex standards :EN/IEC 60079-0; 60079-7; 61241-0; 61241-1
- Other standards: EN/IEC 60529 (IP); 62262 (IK)

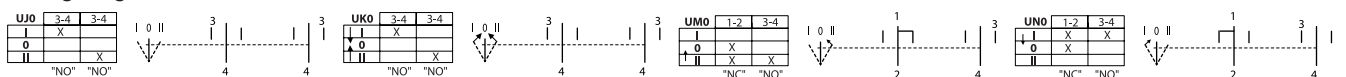


Dimensions in Inches/Millimeters



	Weight in Pounds/Kilograms		Volume in³/dm³		Pack	Catalog Number	
	Rail Mounted	Panel Mounted	Rail Mounted	Panel Mounted		Rail Mounted	Panel Mounted
2-Position Rotary Actuator (contact block to be ordered separately)							
<i>Legend plates, guards, blanking plugs (see Accessories page).</i>							
2-Positions Selector Switch (O-I), 2 maintained positions	0.084/0.038	0.112/0.051	5.49/0.09	13.43/0.22	1	UHOR	UHOP
3-Position Rotary Actuator (contact block to be ordered separately)							
<i>Legend plates, guards, blanking plugs (see Accessories page).</i>							
3-Position Selector Switch, I and II position maintained (I-O-II)	0.084/0.038	0.112/0.051	5.49/0.09	13.43/0.22	1	UJOR	UJOP
3-Position Selector Switch, I and II spring return to O (I->O<-II)	0.084/0.038	0.112/0.051	5.49/0.09	13.43/0.22	1	UKOR	UKOP
3-Position Selector Switch, I maintained, II spring return to O (I-O<-II)	0.084/0.038	0.112/0.051	5.49/0.09	13.43/0.22	1	UMOR	UMOP
3-Position Selector Switch, I spring return to O, II maintained (I->O-II)	0.084/0.038	0.112/0.051	5.49/0.09	13.43/0.22	1	UNOR	UNOP
1-Pole Contact Blocks							
1 x NO		0.071/0.032		3.66/0.06	1	UCB5R	UCB5P
1 x NC						UCB9R	UCB9P
Spare Parts							
Rail to panel mounted conversion adaptor		0.04/0.02		4.88/0.08	1	UPMA	

Wiring Diagram



Unicode® 2 Series Illuminated Push Buttons

Components for Increased Safety Enclosures

Features

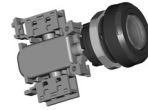
- Can be equipped with up to 2 Unicode 2 Contact Blocks (UCB) Series contact blocks — not supplied.
- ATEX and IECEx certified.
- TS35 rail mounted.
- High intensity single LED light.
- Long lifetime over 100,000 hours.
- Panel mounted.
- Rated operating voltage (Ue): 12 Vac to 254 Vac, 50/60 Hz and 12 Vdc to 60 Vdc.
- Terminal connection: 0.004 in²/2.5 mm².
- Operational life: 100,000 hours.

Standard Materials

- Body: polyamide
- Lens: polycarbonate
- Seal: ethylene propylene diene Monomer (M-class) rubber (EPDM)

Certifications and Compliances

- Actuator and Lens: Certification Type TCe
 - Gas: Zone 1 and 2
 - Conforming to ATEX 94/9/CE: 0081 Ⓢ II 2 G
 - ATEX/IEC Protection: Ex e II
 - Dust: Zone 21 and 22
 - Conforming to ATEX 94/9/CE: 0081 Ⓢ II 2 D
 - ATEX/IEC Protection: Ex tD A21
 - Surface Temperature: -40 °F/-40 °C to +140 °F/+60 °C
 - CE Declaration of Conformity: 5C242
 - ATEX Certificate: LCIE 09 ATEX 3010U
 - IEC Certificate: IECEx LCI 09.0011U
 - Index of Protection (shock and liquid): IP66
 - Impact Resistance (shock): IK10
- Contact Block and Pilot Light: Certification Type CVe
 - Gas: Zone 1 and 2
 - Conforming to ATEX 94/9/CE: 0081 Ⓢ II 2 G
 - ATEX/IEC Protection: Ex e IIC
 - Dust: Zone 21 and 22
 - Conforming to ATEX 94/9/CE: 0081 Ⓢ II 2 D
 - ATEX/IEC Protection: Ex tD A21
 - Surface Temperature: -40 °F/-40 °C to +167 °F/+75 °C
 - CE Declaration of Conformity: 5C243
 - ATEX Certificate: LCIE 09 ATEX 3001U
 - IEC Certificate: IECEx LCI 09.0002U
- Other Certifications: GOST
- Ex standards :EN/IEC 60079-0; 60079-7; 61241-0; 61241-1
- Other standards: EN/IEC 60529 (IP); 62262 (IK)



ULGOH
(rail mounted contacts)



ULGOP
(panel mounted contacts)



Contact Block



UIL08

Unicode® 2 Series Illuminated Push Buttons

Components for Increased Safety Enclosures

	Weight in Pounds/Kilograms		Volume in ³ /dm ³		Pack	Catalog Number	
	Rail Mounted	Panel Mounted	Rail Mounted	Panel Mounted		Rail Mounted	Panel Mounted
Spring Return Illuminated Push Button (contact block to be ordered separately) <i>Legend plates, guards, blanking plugs (see Accessories page).</i>							
Green	0.137/0.062	0.165/0.075	15.87/0.26	17.09/0.28	1	ULG0R	ULG0P
Red	0.137/0.062	0.165/0.075	15.87/0.26	17.09/0.28	1	ULR0R	ULR0P
White	0.137/0.062	0.165/0.075	15.87/0.26	17.09/0.28	1	ULW0R	ULW0P
Blue	0.137/0.062	0.165/0.075	15.87/0.26	17.09/0.28	1	ULB0R	ULB0P
Yellow	0.137/0.062	0.165/0.075	15.87/0.26	17.09/0.28	1	ULY0R	ULY0P

1-Pole Contact Blocks

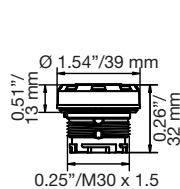
1 x NO						UCB5R	UCB5P
1 x NC	0.071/0.032		3.66/0.06		1	UCB9R	UCB9P

Spare Parts

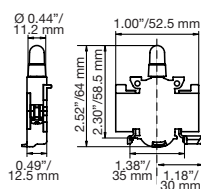
Rail to panel mounted conversion adaptor	0.04/0.02		4.88/0.08		1	UPMA	
--	-----------	--	-----------	--	---	-------------	--

Marking	Color	Weight in Pounds/Kilograms	Volume in ³ /dm ³	Pack	Catalog Number
Set of Five Spare Inserts					
(unmarked)	Green	0.02/0.01	0.61/0.01	1	UIAG
(unmarked)	Red	0.02/0.01	0.61/0.01	1	UIAR
(unmarked)	Yellow	0.02/0.01	0.61/0.01	1	UIAY
(unmarked)	White	0.02/0.01	0.61/0.01	1	UIAW
(unmarked)	Blue	0.02/0.01	0.61/0.01	1	UIAB
(unmarked)	Black	0.02/0.01	0.61/0.01	1	UIAN
ON	Green	0.02/0.01	0.61/0.01	1	UIA01
OFF	Red	0.02/0.01	0.61/0.01	1	UIA02
START	Green	0.02/0.01	0.61/0.01	1	UIA03
STOP	Red	0.02/0.01	0.61/0.01	1	UIA04
MARCHE	Green	0.02/0.01	0.61/0.01	1	UIA05
ARRET	Red	0.02/0.01	0.61/0.01	1	UIA06
I	Green	0.02/0.01	0.61/0.01	1	UIA07
O	Red	0.02/0.01	0.61/0.01	1	UIA08

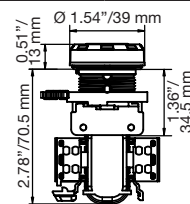
Dimensions in Inches/Millimeters



Rail Mounted Contacts



Panel Mounted Contacts



Wiring Diagram



Unicode® 2 Series Pilot Lights

Components for Increased Safety Enclosures

Features

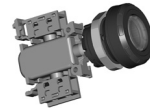
- ATEX and IEC certified.
- TS35 rail mounted.
- High intensity single LED light.
- Long lifetime over 100,000 hours.
- Rated operating voltage (Ue): 12 Vac to 254 Vac, 50/60 Hz and 12 Vdc to 60 Vdc.
- Terminal connection: 0.004 in²/2.5 mm².
- Operational life: 100,000 hours.

Standard Materials

- Body: polyamide
- Lens: polycarbonate
- Seal: ethylene propylene diene Monomer (M-class) rubber (EPDM)

Certifications and Compliances

- Actuator and Lens: Certification Type TCe
 - Gas: Zone 1 and 2
 - Conforming to ATEX 94/9/CE: 0081 II 2 G
 - ATEX/IEC Protection: Ex e II
 - Dust: Zone 21 and 22
 - Conforming to ATEX 94/9/CE: 0081 II 2 D
 - ATEX/IEC Protection: Ex tD A21
 - Surface Temperature: -40 °F/-40 °C to +140 °F/+60 °C
 - CE Declaration of Conformity: 5C242
 - ATEX Certificate: LCIE 09 ATEX 3010U
 - IEC Certificate: IECEx LCI 09.0011U
 - Index of Protection (shock and liquid): IP66
 - Impact Resistance (shock): IK10
- Contact Block and Pilot Light: Certification Type Cve
 - Gas: Zone 1 and 2
 - Conforming to ATEX 94/9/CE: 0081 II 2 G
 - ATEX/IEC Protection: Ex e IIC
 - Dust: Zone 21 and 22
 - Conforming to ATEX 94/9/CE: 0081 II 2 D
 - ATEX/IEC Protection: Ex tD A21
 - Surface Temperature: -40 °F/-40 °C to +167 °F/+75 °C
 - CE Declaration of Conformity: 5C243
 - ATEX Certificate: LCIE 09 ATEX 3001U
 - IEC Certificate: IECEx LCI 09.0002U
- Other Certifications: GOST
- Ex standards :EN/IEC 60079-0; 60079-7; 61241-0; 61241-1
- Other standards: EN/IEC 60529 (IP); 62262 (IK)

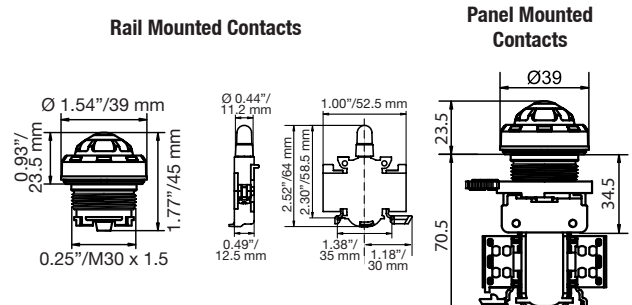


UPG0H
(rail mounted contacts)



UPG0P
(panel mounted contacts)

Dimensions in Inches/Millimeters



Wiring Diagram



	Weight in Pounds/Kilograms		Volume in ³ /dm ³		Pack	Catalog Number	
	Rail Mounted	Panel Mounted	Rail Mounted	Panel Mounted		Rail Mounted	Panel Mounted
Pilot Light: 12 Vac to 254, Vac 50/60 Hz, 12 Vdc to 60 Vdc <i>Legend plates, guards, blanking plugs (see Accessories page).</i>							
Green	0.123/0.056	0.152/0.069	17.70/0.29	18.92/0.31	1	UPG0R	UPG0P
Red	0.123/0.056	0.152/0.069	17.70/0.29	18.92/0.31	1	UPR0R	UPR0P
White	0.123/0.056	0.152/0.069	17.70/0.29	18.92/0.31	1	UPW0R	UPW0P
Blue	0.123/0.056	0.152/0.069	17.70/0.29	18.92/0.31	1	UPB0R	UPB0P
Yellow	0.123/0.056	0.152/0.069	17.70/0.29	18.92/0.31	1	UPY0R	UPY0P
Spare Parts							
Rail to panel mounted conversion adaptor		0.04/0.02		4.88/0.08	1		UPMA
Spare Lenses							
Green		0.06/0.03		3.66/0.06	1		UPGL
Red		0.06/0.03		3.66/0.06	1		UPRL
White		0.06/0.03		3.66/0.06	1		UPWL
Blue		0.06/0.03		3.66/0.06	1		UPBL
Yellow		0.06/0.03		3.66/0.06	1		UPYL

Unicode® 2 Series 1-Pole Contact Block

Components for Increased Safety Enclosures

Features

- ATEX and IECEx certified.
- TS35 rail mounted.
- Panel mounted.
- High performance contact block suitable for low intensity (less than 5mA).
- Rated operating voltage (Ue): 500 Vac — 110 Vdc
- Switching capacity:
 - AC12: 16 Amp/400 Vac
 - AC14: 10 Amp/400 Vac
 - AC15: 6 Amp/500 Vac
 - DC13: 2 Amp/24 Vdc and 1 Amp/110 Vdc
- Terminal connection: 0.004 in²/2.5 mm².
- Operational life: 100,000 hours.

Standard Materials

- Body: polyamide
- Contact: silver alloy

Certifications and Compliances

- Certification Type CVe
 - Gas: Zone 1 and 2
 - Conforming to ATEX 94/9/CE: 0081 Ⓢ II 2 G
 - ATEX/IEC Protection: Ex e IIC
 - Dust: Zone 21 and 22
 - Conforming to ATEX 94/9/CE: 0081 Ⓢ II 2 D
 - ATEX/IEC Protection: Ex tD A21
 - Surface Temperature: -40 °F/-40 °C to +167 °F/+75 °C
 - CE Declaration of Conformity: 5C243
 - ATEX Certificate: LCIE 09 ATEX 3001U
 - IEC Certificate: IECEx LCI 09.0002U
- Other Certifications: GOST
- Ex standards :EN/IEC 60079-0; 60079-7; 61241-0; 61241-1
- Product Standards: EN/IEC 60947-1; 60947-5
- Other standards: EN/IEC 60529 (IP); 62262 (IK)

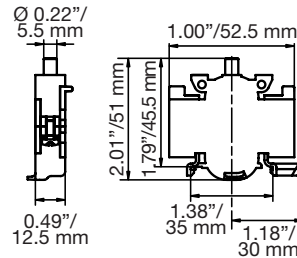


UCB5R
Rail Mounted Contacts
Top Access



UCB5P
Panel Mounted Contacts
Bottom Access

Dimensions in Inches/Millimeters



Wiring Diagram



	Weight in Pounds/Kilograms		Volume in ³ /dm ³		Pack	Catalog Number	
	Rail Mounted	Panel Mounted	Rail Mounted	Panel Mounted		Rail Mounted	Panel Mounted
1-Pole Contact Blocks							
1 x NO						UCB5R	UCB5P
1 x NC	0.071/0.032		3.66/0.06		1	UCB9R	UCB9P

Unicode® 2 Series 16 Amp Switches

Components for Increased Safety Enclosures

Features

- Two contact switches
 - ATEX and IECEx certified.
 - 1 to 4 pole switches.
 - TS35 rail mounted.
 - Panel mounted.
- Three or four contact switches
 - Padlockable.
 - Can be equipped with switch and changeover switch contact blocks.
 - ATEX and IECEx certified.
- Switching capacity:
 - AC12: 16 Amp/400 Vac
 - AC14: 10 Amp/400 Vac
 - AC15: 6 Amp/500 Vac
 - DC13: 2 Amp/24 Vdc and 1 Amp/110 Vdc
- Terminal connection: 0.004 in²/2.5 mm².
- Operational life: 100,000 hours.

Standard Materials

- Body: polyamide
- Two contact switches sealing material: neoprene

Certifications and Compliances

- Switches: Certification Type 8008/2
 - Gas: Zone 1 and 2
 - Conforming to ATEX 94/9/CE: 0102 Ⓢ II 2 G
 - ATEX/IEC Protection: Ex de IIC
 - Dust: Zone 21 and 22
 - Conforming to ATEX 94/9/CE, ATEX/IEC Protection: authorized to be used in an approved dustproof enclosure
 - Surface Temperature: -67 °F/-55 °C to +212 °F/+100 °C
 - CE Declaration of Conformity: 5C243
 - ATEX Certificate: PTB 00 ATEX 1111U
 - IEC Certificate: IECEx PTB 06.0010U
- Other Certifications: CSA, UL, FM
- Handles: Certification Type AUXe
 - Gas: Zone 1 and 2
 - Conforming to ATEX 94/9/CE: 0081 Ⓢ II 2 G
 - ATEX/IEC Protection: Ex e IIC
 - Dust: Zone 21 and 22
 - Conforming to ATEX 94/9/CE: 0081 Ⓢ II 2 D
 - ATEX/IEC Protection: Ex tD A21
 - Surface Temperature: -4 °F/-20 °C to +167 °F/+75 °C
 - CE Declaration of Conformity: 5C221
 - ATEX Certificate: LCIE 03 ATEX 0012U
 - IEC Certificate: LCIE Ex 03.011U
- Other Certifications: GOST
- Ex standards :EN/IEC 60079-0; 60079-7; 61241-0; 61241-1
- Product Standards: EN/IEC 60947-1; 60947-4; 60947-5
- Other standards: EN/IEC 60529 (IP); 62262 (IK)



US30R
(rail mounted contacts)



US30P
(panel mounted contacts)



USH2R
(rail mounted contacts)



USH2P/USH3P/USH4P
(panel mounted contacts)

Unicode® 2 Series 16 Amp Switches

Components for Increased Safety Enclosures

	Wiring Diagram	Pack	Catalog Number	
			Rail Mounted	Panel Mounted
Two Contact Switches (handle to be ordered separately)				
2-pole switch		1	US32R	US32P
2 ways 1-pole Selector switch		1	US30R	US30P
3 ways 1-pole Selector switch		1	US31R	US31P
3 ways 1-pole Selector switch with spring return from 135° to 90°		1	US33R	US33P
3 ways 1-pole Selector switch with spring return from 45° to 90°		1	US34R	US34P
Padlockable handle		1	USH2R	USH2P
Three or Four Contact Switches (handle to be ordered separately)				
4-pole switch		1	US35R	US35P
3 ways 2-pole Selector switch		1	US36R	US36P
2 ways 2-pole Selector switch		1	US37R	US37P
3 ways 2-pole — Late break, early make Selector switch with spring return from 45° to 90°		1	US38R	US38P
3 ways 2-pole — Late break, early make Selector switch with spring return from 135° to 90°		1	US39R	US39P
Padlockable handle for rail mounted		1	USH2R	—
Padlockable handle for panel mounted ECES Series stainless steel enclosures		1	—	USH3P
Padlockable handle for panel mounted ECEP and ECEA Series polyester or aluminum enclosures		1	—	USH4P

Dimensions in Inches/Millimeters

	A	B	C	D
2 Contacts	1.87/47.5	2.56/65.0	1.89/48.0	1.77/45.0
3 and 4 Contacts	2.38/60.5	2.87/73.0	1.89/48.0	1.77/45.0

Component	Dimension 1	Dimension 2
Changeover Switch/Switch	1.89"/48 mm	(2) Ø 0.18"/4.5 mm
USH2R	2.17"/55 mm	2.05"/52 mm
USH2P/USH3P/USH4P	1.50"/38 mm	2.36"/60 mm

† Factory configured contact arrangement.

Unicode® 2 Series Accessories

Components for Increased Safety Enclosures

Controls

Nameplates — Set of 10

Blank self-adhesive, laminated plastic 2.28"/58 mm x 0.71"/18 mm.

Color	Catalog Number	Pack
White (black letters)	UNPW	1
Yellow (black letters)	UNPY	1
Red (white letters)	UNPR	1
Blue (white letters)	UNPB	1
Black (white letters)	UNPN	1
Green (white letters)	UNPG	1

Inserts for Push Button — Set of 5

Marking	Color	Catalog Number	Pack
(unmarked)	Green	UIAG	1
(unmarked)	Red	UIAR	1
(unmarked)	Yellow	UIAY	1
(unmarked)	White	UIAW	1
(unmarked)	Blue	UIAB	1
(unmarked)	Black	UIAN	1
ON	Green	UIA01	1
OFF	Red	UIA02	1
START	Green	UIA03	1
STOP	Red	UIA04	1
MARCHE	Green	UIA05	1
ARRET	Red	UIA06	1
I	Green	UIA07	1
O	Red	UIA08	1

Inserts for Illuminated Push Button — Set of 5

Marking	Color	Catalog Number	Pack
(unmarked)	Green	UILG	1
(unmarked)	Red	UILR	1
(unmarked)	Yellow	UILY	1
(unmarked)	White	UILW	1
(unmarked)	Blue	UILB	1
ON	Green	UIL01	1
OFF	Red	UIL02	1
START	Green	UIL03	1
STOP	Red	UIL04	1
MARCHE	Green	UIL05	1
ARRET	Red	UIL06	1
I	Green	UIL07	1
O	Red	UIL08	1

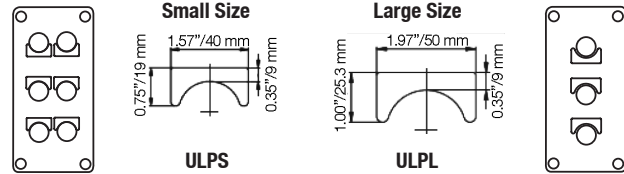
Spare Key

For all key-operated buttons.

Description	Catalog Number	Pack
Spare key type 4 A 185	SK4A185	1

Standard Legend Plates


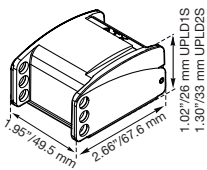






Two sizes available. Self-adhesive yellow laminated plastic (black lettering).



Text	Catalog Number		
	Small	Large	Pack
Blank (set of 10)	ULPS	ULPL	1
ON	ULPSA01	ULPLA01	1
OFF	ULPSA02	ULPLA02	1
FORWARD	ULPSA03	ULPLA03	1
REVERSE	ULPSA04	ULPLA04	1
JOG	ULPSA05	ULPLA05	1
RUN	ULPSA06	ULPLA06	1
START	ULPSA07	ULPLA07	1
STOP	ULPSA08	ULPLA08	1
UP	ULPSA09	ULPLA09	1
DOWN	ULPSA10	ULPLA10	1
FAST	ULPSA11	ULPLA11	1
SLOW	ULPSA12	ULPLA12	1
RAISE	ULPSA13	ULPLA13	1
LOWER	ULPSA14	ULPLA14	1
OPEN	ULPSA15	ULPLA15	1
CLOSE	ULPSA16	ULPLA16	1
LOW	ULPSA17	ULPLA17	1
HIGH	ULPSA18	ULPLA18	1
TEST	ULPSA19	ULPLA19	1
RESET	ULPSA20	ULPLA20	1
EMERGENCY STOP	ULPSA21	ULPLA21	1
MARCHE	ULPSA22	ULPLA22	1
ARRET	ULPSA23	ULPLA23	1
ARRET D'URGENCE	ULPSA24	ULPLA24	1
HAUT	ULPSA25	ULPLA25	1
BAS	ULPSA26	ULPLA26	1
O—I	ULPSH01	ULPLH01	1
ON—OFF	ULPSH02	ULPLH02	1
START—STOP	ULPSH03	ULPLH03	1
STOP—START	ULPSH04	ULPLH04	1
HAND—AUTO	ULPSH05	ULPLH05	1
MANU—AUTO	ULPSH06	ULPLH06	1
FORWARD—REVERSE	ULPSH07	ULPLH07	1
REMOTE—LOCAL	ULPSH08	ULPLH08	1
MARCHE—ARRET	ULPSH09	ULPLH09	1
I—O—II	ULPSJ01	ULPLJ01	1
OFF—O—ON	ULPSJ02	ULPLJ02	1
START—NORMAL—STOP	ULPSJ03	ULPLJ03	1
HAND—OFF—AUTO	ULPSJ04	ULPLJ04	1
MANU—O—AUTO	ULPSJ05	ULPLJ05	1
FORWARD—OFF—REVERSE	ULPSJ06	ULPLJ06	1
LOCAL—REMOTE—AUTO	ULPSJ07	ULPLJ07	1
LOCAL—O—REMOTE	ULPSJ08	ULPLJ08	1
MARCHE—NORMAL—ARRET	ULPSJ09	ULPLJ09	1

Unicode® 2 Series Accessories

Components for Increased Safety Enclosures

	Description	Catalog Number
	Yellow Guard Mushroom head protection for emergency stop	098657
	Padlockable Guard Stainless steel and plastic cover, capacity: 3 padlocks diameter 0.24"/6 mm maximum (not supplied)	
	For push button and rotary actuator	  UPLD1S
	For mushroom head actuator	  UPLD2S
	Cover Blanking Plug For cover drilling (dia. 1.2"/30.5 mm)	UBP
	Device Adaptor Rail to panel mounted conversion adaptor	UPMA

V Series AC Ammeter

Components for Increased Safety Enclosures

Zone 1 and 2
 Ⓢ II 2 G
 ATEX/IEC

Controls

CONTROLS: HAZARDOUS LOCATION CONTROL STATIONS AND SWITCHES

Applications

- Suitable for use with certified Ex e enclosures for control equipment in industrial processes.

Features

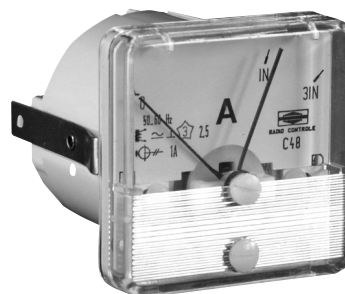
- DIN rail mounted (TS35) and panel mounted versions.

Technical Data

- Rated Voltage: 500 V
- Frequency: 25 to 100 Hz
- Consumption: 0.7 VA
- Permanent overload: 1.2 In
- Instantaneous overload: 10 In/5s
- Terminal connections: M5 Terminals for lugs

Certifications and Compliances

- Certification Type C48D
- Gas: Zone 1 and 2
 - Conforming to ATEX 94/9/CE: CE 0081 Ⓢ II 2 G
 - ATEX/IEC Protection: Ex em II
- Dust: Zone 21 and 22
 - Conforming to ATEX 94/9/CE: Ⓢ
 - ATEX/IEC Protection: Authorized to be used with an approved dustproof Enclosure
- Service Temperature: -13 °F/-25 °C to +131 °F/+55 °C
- Declaration of Conformity: 5C215
- ATEX Certificate: LCIE 02 ATEX 0006U
- IEC Certificate: LCIE Ex 02.019U
- Ex Standards: EN / IEC 60079-0; 60079-7; EN 60079-18
- Product Standards: EN / IEC 60951-1
- Other Standards: EN / IEC 60529 (IP); 62262 (IK)



AC Ammeter

AC Ammeter 1.89 x 1.89"/48 x 48 mm.

Connection on current transformer — Deflection 90° — Red adjustable index — Accuracy class 1.5 — Round barrel

Description	Weight in lb/kg	Volume in ³ /dm ³	Catalog Number	Pack
Rail Mounted				
1A C.T. 3 x F.L.C. with 0-1-3 Scale	0.22/0.1	24.41/0.4	VA1348R	1
1A C.T. 5 x F.L.C. with 0-1-5 Scale	0.22/0.1	24.41/0.4	VA1548R	1
1A C.T. 6 x F.L.C. with 0-1-6 Scale	0.22/0.1	24.41/0.4	VA1648R	1
5A C.T. 3 x F.L.C. with 0-1-3 Scale	0.22/0.1	24.41/0.4	VA5348R	1
5A C.T. 5 x F.L.C. with 0-1-5 Scale	0.22/0.1	24.41/0.4	VA5548R	1
5A C.T. 6 x F.L.C. with 0-1-6 Scale	0.22/0.1	24.41/0.4	VA5648R	1
Panel Mounted				
1A C.T. 3 x F.L.C. with 0-1-3 Scale	0.22/0.1	24.41/0.4	VA1348P	1
1A C.T. 5 x F.L.C. with 0-1-5 Scale	0.22/0.1	24.41/0.4	VA1548P	1
1A C.T. 6 x F.L.C. with 0-1-6 Scale	0.22/0.1	24.41/0.4	VA1648P	1
5A C.T. 3 x F.L.C. with 0-1-3 Scale	0.22/0.1	24.41/0.4	VA5348P	1
5A C.T. 5 x F.L.C. with 0-1-5 Scale	0.22/0.1	24.41/0.4	VA5548P	1
5A C.T. 6 x F.L.C. with 0-1-6 Scale	0.22/0.1	24.41/0.4	VA5648P	1
Window for Ammeter 48 x 48				
	0.22/0.1	24.41/0.4	VAW48	1

V Series AC Ammeter

Components for Increased Safety Enclosures

Zone 1 and 2
 II 2 G
 ATEX/IEC

Interchangeable Dials for V Series AC Ammeter

Scale			Catalog Number	
1 A Current Transformer 3 x F.L.C.				
0	-	5	A	DA135
0	-	10	A	DA1310
0	-	15	A	DA1315
0	-	20	A	DA1320
0	-	30	A	DA1330
0	-	40	A	DA1340
0	-	50	A	DA1350
0	-	60	A	DA1360
0	-	75	A	DA1375
0	-	100	A	DA13100
0	-	125	A	DA13125
0	-	150	A	DA13150
0	-	200	A	DA13200
0	-	250	A	DA13250
1 A Current Transformer 5 x F.L.C.				
0	-	5	A	DA155
0	-	10	A	DA1510
0	-	15	A	DA1515
0	-	20	A	DA1520
0	-	30	A	DA1530
0	-	40	A	DA1540
0	-	50	A	DA1550
0	-	60	A	DA1560
0	-	75	A	DA1575
0	-	100	A	DA15100
0	-	125	A	DA15125
0	-	150	A	DA15150
0	-	200	A	DA15200
0	-	250	A	DA15250
1 A Current Transformer 6 x F.L.C.				
0	-	5	A	DA165
0	-	10	A	DA1610
0	-	15	A	DA1615
0	-	20	A	DA1620
0	-	30	A	DA1630
0	-	40	A	DA1640
0	-	50	A	DA1650
0	-	60	A	DA1660
0	-	75	A	DA1675
0	-	100	A	DA16100
0	-	125	A	DA16125
0	-	150	A	DA16150
0	-	200	A	DA16200
0	-	250	A	DA16250

Scale			Catalog Number	
5 A Current Transformer 3 x F.L.C.				
0	-	5	A	DA535
0	-	10	A	DA5310
0	-	15	A	DA5315
0	-	20	A	DA5320
0	-	30	A	DA5330
0	-	40	A	DA5340
0	-	50	A	DA5350
0	-	60	A	DA5360
0	-	75	A	DA5375
0	-	100	A	DA53100
0	-	125	A	DA53125
0	-	150	A	DA53150
0	-	200	A	DA53200
0	-	250	A	DA53250
5 A Current Transformer 5 x F.L.C.				
0	-	5	A	DA555
0	-	10	A	DA5510
0	-	15	A	DA5515
0	-	20	A	DA5520
0	-	30	A	DA5530
0	-	40	A	DA5540
0	-	50	A	DA5550
0	-	60	A	DA5560
0	-	75	A	DA5575
0	-	100	A	DA55100
0	-	125	A	DA55125
0	-	150	A	DA55150
0	-	200	A	DA55200
0	-	250	A	DA55250
5 A Current Transformer 6 x F.L.C.				
0	-	5	A	DA565
0	-	10	A	DA5610
0	-	15	A	DA5615
0	-	20	A	DA5620
0	-	30	A	DA5630
0	-	40	A	DA5640
0	-	50	A	DA5650
0	-	60	A	DA5660
0	-	75	A	DA5675
0	-	100	A	DA56100
0	-	125	A	DA56125
0	-	150	A	DA56150
0	-	200	A	DA56200
0	-	250	A	DA56250

Dimensions and Drilling Information

