

# Mercmaster™ Jr. Luminaires

## High Pressure Sodium. Suitable for Use in Wet Locations

UNILETS® for Use with Threaded Metal Conduit. 120 V Integral Ballast. Medium Base Socket for Medium Base Lamps.

### With Globe:

35 W, 50 W: †

Class I, Division 2, Groups A, B, C, D

Class II, Division 1 and 2, Groups E ‡, F, G

Class III

70 W: †

Class I, Division 2, Groups A, B, C, D

Class II, Division 1 and 2, Groups E ‡, F, G

100 W, 150 W: †

Class I, Division 2, Groups A, B, C, D

### With Refractor (NEMA V):

35 W, 50 W, 70 W, 100 W: †

Class I, Division 2, Groups A, B, C, D

Class II, Division 1 and 2, Groups E ‡, F, G

Class III

150 W: †

Class I, Division 2, Groups A, B, C, D

## Applications

- Inexpensive HID integrally ballasted fixture for use in hazardous locations – inexpensive to buy and inexpensive to operate (uses one-fifth as much electrical energy as incandescent and three-quarters as much as fluorescent).
- Enclosed and gasketed HID lighting fixtures for use in tunnels, walkways, bridges, storage facilities, processing plants, parking lots, foundries, manufacturing plants, power plants and other locations where moisture, dirt, dust or corrosive atmospheres are encountered.

## Features

- “Wireless” design. Threading of fixture unit onto mounting hood makes electrical connection. Only wiring required is attaching two wires to connection block in mounting hood.
- Safe, easy servicing without disconnecting any wiring. “Wireless” fixture unit easily threads off mounting hood for convenient servicing.
- Quick, easy conversion from Appleton V-51® incandescent installation to Mercmaster Jr. HID. Just remove V-51® fixture unit and thread Mercmaster Jr. fixture unit onto existing V-51® mounting hood.
- Choice of mounting hoods. Standard fixtures in pendant, ceiling, outlet box, wall and stanchion mountings.
- Standard pendant mounting hood for rigid or flexible mounting. Balanced round design automatically hangs plumb when used with flexible hanger.
- Unitized construction reduces installation and maintenance costs.
- Ballast has standard non-PCB biodegradable capacitors.
- Medium base socket is furnished with 392 °F/200 °C leads, prewired to the ballast. Porcelain socket assures trouble-free operation in high ambient installations.
- Prismatic glass globe or glass refractor is standard and threads directly into fixture housing. Eliminates glare and provides uniform light distribution.
- Fiberglass reinforced polyester reflector for exceptionally severe corrosive atmospheres. Vented for cooler, dirt-free operation, increased lumen output.

## Standard Materials

- Mounting hoods: copperfree (4/10 of 1% max.) aluminum or malleable iron
- Ballast bodies: copperfree (4/10 of 1% max.) aluminum
- Guards: copperfree (4/10 of 1% max.) aluminum or steel
- Reflectors: fiberglass reinforced polyester or porcelain
- Globe: 35 W-100 W, threaded prismatic glass and threaded polycarbonate; 150 W, threaded heat-resistant prismatic glass
- Refractor: heat-resistant prismatic glass

## Standard Finishes

- Ballast bodies, aluminum guard and VMA, VXHA-A, OBVW1-A, OBV1-A, JBW1-A, JB1-A, GSW2 and MS mounting hoods: epoxy powder coat finish, electrostatically applied for complete, uniform surface protection
- VA, VXHA, OBVW1, OBV1, GS-2, JBW1, and JB1 malleable iron mounting hoods: triple coat – (1) zinc electroplate; (2) chromate; and (3) epoxy powder coat
- Steel guard: zinc electroplate

† The MJBW Wall Mount Fixture is suitable for Class I, Division 2, Groups A, B, C and D only.

‡ Per NEC 500.6(1), there is no such classification as Class II, Division 2, Group E.



## Illustrated Feature

Conversion from Appleton V-51 incandescent installation to HID Mercmaster Jr. is easy and fast.



### Step No. 1:

After power is shut off, remove present incandescent V-51 fixture unit from existing V-51 mounting hood.



### Step No. 2:

Thread Mercmaster Jr. HID fixture unit onto existing V-51 mounting hood – and conversion is completed.

## Options

- Fuses for fixtures, factory installed. Add suffix -F.









## Certifications and Compliances

- UL Standard: UL 1598, UL 1598A, UL 844
- UL Listed: E10444

# Mercmaster™ Jr. Luminaire Mounting Hoods and Outlet Boxes

## High Pressure Sodium. Suitable for Use in Wet Locations

UNILETS® for Use with Threaded Metal Conduit. 120 V Integral Ballast. Medium Base Socket for Medium Base Lamps.

		Hub Size (Inches)	Catalog Number	
			Aluminum	Malleable Iron
<b>Pendant Mounting</b> Furnished with connection block, gasket and screws				
	VMA	1/2	—	VA50
	VA	3/4	VMA75	VA75
		1	VMA100	VA100
<b>Ceiling Mounting</b> Five Hubs. Furnished with connection block, gasket, screws and four close-up plugs				
	VXHA	1/2	VXHA50-A	VXHA50
		3/4	VXHA75-A	VXHA75
		1	VXHA100-A	VXHA100
<b>Cast/Outlet Box Mounting</b> Furnished with connection block, mounting plate and gasket. Octagonal outlet box not suitable for classified locations. Fits SEH and 3-1/4" or 4" Octagonal Box ②				
	Wall ⑤		OBVW1-A	OBVW1
	Ceiling		OBV1-A	OBV1
<b>GS Round Base – Fits GSU Cast Boxes</b> ③ ④ Furnished with connection block, gasket and screws				
	Wall ⑤		—	GSW2
	Ceiling		—	GS2
<b>JB Round Base – Fits JBX Cast Boxes</b> ③ ④ Furnished with connection block, gasket and screws				
	Wall ⑤		JBW1-A	JBW1
	Ceiling		JB1-A	JB1
<b>Stanchion Mounting</b> ⑥ 25° Stanchion furnished with connection block and screws.				
	MS	1-1/4	MS-125	—
		1-1/2	MS-150	—
<b>JBX Cast Conduit Outlet Boxes</b> ⑥				
	JBX	1/2	JBX50L-A	—
		3/4	JBX75L-A	—
<b>GSU Cast Conduit Outlet Box (Form 20)</b> ⑥				
	GSU-20	1/2 or 3/4	—	GSU-20
	GSU-100	1	—	GSU-100

② Order SEH box from catalog section A and octagonal box from Section OB. To order fixture with guard, add G before voltage (example: MOB35G-120).

③ Order JBX below. Using JBX Box with these fixtures and mounting hoods provides 15/16" clearance from wall with refractor and 1-5/8" clearance from wall with globe.

④ Order GSU below. Using GSU Box with these fixtures and mounting hoods provides 1-5/16" clearance from wall with refractor and 2" clearance from wall with globe.

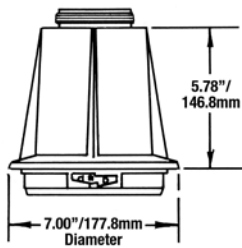
⑤ Reflectors cannot be used with wall mount fixtures. See dimensions for globe or refractor clearance from wall for these fixtures.

⑥ Stanchion mounting hood can be used with standard dome or 30° angle reflector.

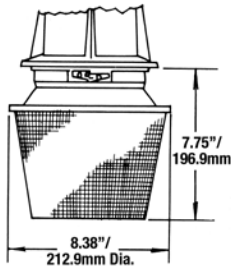
# Mercmaster™ Jr. Luminaire Dimensions

35 W, 50 W, 70 W, 100 W, 150 W

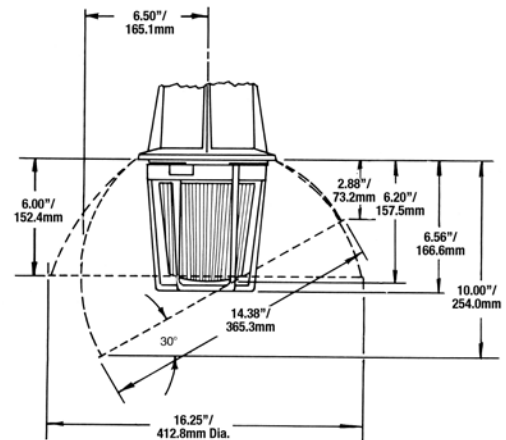
UNILETS® for Use with Threaded Metal Conduit. 120 V Integral Ballast. Medium Base Socket for Medium Base Lamps.



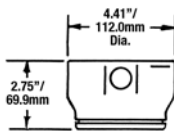
MBL Ballast Body



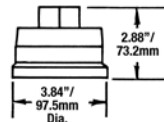
Fixture with 8" Refractor



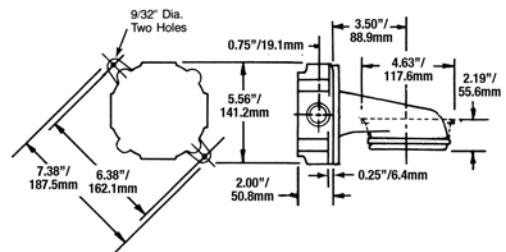
Fixture with Guard and Polyester Reflectors



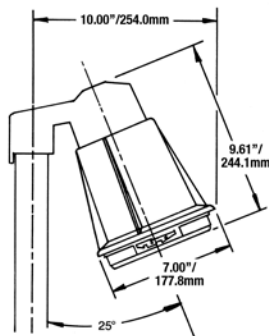
VXHA Ceiling Mount



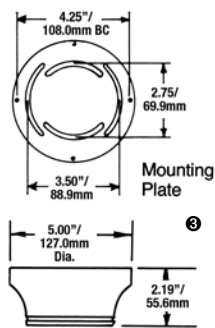
VMA Pendant Mount



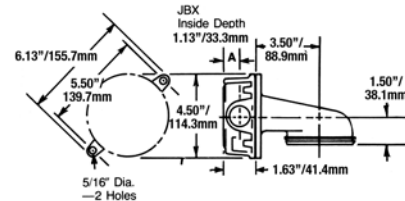
GSW Wall Mount ❶ and GS Ceiling Mount with GSU Box ❷



Stanchion Mount ❸



OBV Outlet Box Mount and Mounting Plate



JBW Wall Mount ❶ with JBX Box ❷

❶ Mounting holes 9/32" diameter on 5-1/8" centers. Mounting plate is a separate piece furnished with outlet box mount fixture. The 2.75" dimension is for mounting on 3-1/4" octagonal boxes and the 3.50" dimension is for 4" octagonal boxes.

❷ Wall mount fixtures provide the following wall clearances: with GSU box – 2" from wall with globe and 1-5/16" from wall with refractor; with JBX box – 1-5/8" from wall with globe and 15/16" from wall with refractor. Reflectors cannot be used with wall mount fixtures.

❸ Order GSU or JBX box separately.

❹ Standard dome or 30° angle reflectors can be used with stanchion mount.