

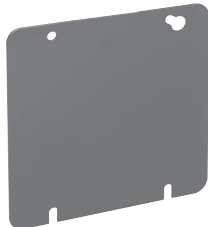
Steel Square Covers

4¹¹/₁₆" SQUARE COVERS – CUBIC INCH CAPACITY (SEE BELOW)

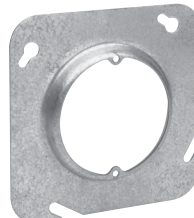
UL LISTED



TP568



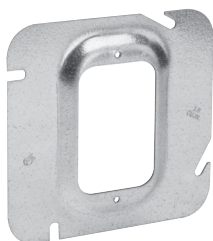
TP568RED



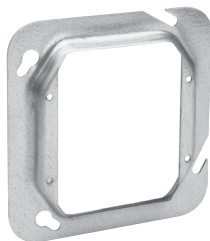
TP569, TP570, TP571,
TP573, TP575



TP572



TP574 - TP582,
TP529, TP531



TP584, TP586, TP589,
TP593, TP541, TP543



TP851*



TP852*

Cat. #	Description	Capacity Cu. In.	Unit Qty.	Wt. Lbs. Per 100
Flat and Raised				
TP568†	Flat Blank	-	25	40
TP568RED	Flat Blank, Red	-	25	40
TP569‡	½" Raised, with Ears 2¾"	3.3	25	36
TP570	⅝" Raised, with Ears 2¾"	3.8	25	38
TP571‡	¾" Raised, with Ears 2¾"	5.0	25	40
TP572†	Flat, with ½" KO	-	25	40
TP573‡	1" Raised, with Ears 2¾"	7.0	25	44
TP575‡	1½" Raised, with Ears 2¾"	9.0	25	48
Air Plenum				
TP851*	Flat Blank Gasketed with Captive Screws	-	50	42
TP852*	Flat Ring Double Gasketed	-	25	20
One Device				
TP574	¼" Raised	1.8	25	32
TP576	½" Raised	3.3	25	36
TP578	¾" Raised	5.0	25	42
TP579	⅝" Raised	4.5	25	39
TP580	1" Raised	6.8	25	46
TP582	1¼" Raised	8.5	25	52
TP529	1½" Raised	11.3	25	64
TP531	2" Raised	15.0	25	76
Two Device				
TP590‡	Flat	-	25	21
TP583‡	¼" Raised	3.0	25	26
TP584	½" Raised	6.0	25	30
TP587	⅝" Raised	8.0	25	32
TP586	¾" Raised	8.8	25	34
TP589	1" Raised	11.7	25	38
TP593	1¼" Raised	14.0	25	42
TP541	1½" Raised	18.8	25	63
TP543	2" Raised	24.5	25	79

Steel Boxes

*For Air Plenum (no mounting holes).

†CSA certified.

‡Not UL Listed.

Steel Square Covers

4¹¹/₁₆" SQUARE SURFACE COVERS – 9.0 CUBIC INCH CAPACITY

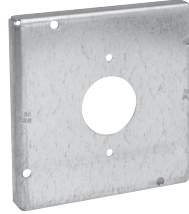
1/2" RAISED



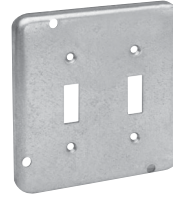
TP720



TP722



TP724, TP730,
TP736



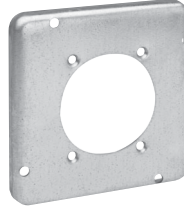
TP726



TP728



TP732



TP734



TP738



TP740

Cat. #	Description	Unit Qty.	Wt. Lbs. Per 100
TP720	For One Toggle Switch	10	52
TP722	For One Duplex Receptacle	10	49
TP724	For One Single Receptacle 1 ¹³ / ₃₂ " Dia.	10	53
TP730	For One 20 Amp Single Receptacle 1.620" Dia.	10	50
TP736	For One 1.730" Dia. Power Outlet	10	51
TP726	For Two Toggle Switches	10	52
TP728	For Two Duplex Receptacles	10	44
TP732	For One 2.125" Dia. Range/Dryer Receptacle	10	48
TP734	For One 2.480" Dia. Power Outlet	10	45
TP738	For One Ground Fault Interrupter	10	45
TP740	For One GFI Receptacle and One Toggle	25	45
TP741	For Two GFI Receptacles	10	43

Steel Boxes