

Pro

ProRec

Meridian FT/ml



FEATURES

- Integral support tabs to allow for ceiling suspension.
- Corrosion resistant housing and frame.
- Multi voltage electronic ballast resistant to brownouts or voltage and frequency fluctuations.
- Filter tube options allow colored lamps to operate on a separate circuit for darken ship mode.
- Three and four lamp models are provided with two ballasts for independent switching or color effects.
- Parabolic louvre option for glare reduction.
- Tool-less entry for easy relamping.
- Reversible hinged lens frame with captive knurled screws.
- Side access plate allows for ease of installation.
- Optional self contained emergency battery backup ballasts with test switch.
- Optional long life T5 lamps available upon request (consult factory).

APPLICATIONS

- T-bar 2x2 and 4x2 drop ceiling types
- Marine interior
- Office
- Corridor

APPROVALS

- Conforms to IP52
- Marine Inside Drip Proof Type
- ABS

STANDARDS

- UL 1598A - Luminaires for Marine Vessels
- UL 924 - Emergency Lighting Equipment

TECHNICAL SPECIFICATIONS

HOUSING

Type 5052H32 copper free aluminum with an electrostatically applied white polyester powder coat finish.

LENS FRAME

Type 6061T6 aluminum with an electrostatically applied white polyester powder coat finish.

LENS

Prismatic DR acrylic.

REFLECTOR

Type 5052H32 copper free aluminum with an electrostatically applied white polyester powder coat finish. Minimum 90% reflectance.

ENTRIES

Four 1/2" and four 3/4" NPT knockouts.

LAMP HOLDER

Polycarbonate. Twist lock lamp holders for bi-pin lamps and spring loaded for HO lamps.

MOUNTING

Recessed ceiling type lay-in, for 2 x 2 or 2 x 4, "T-bar system".

TERMINAL BLOCK

Two pole terminal block located on the side access plate.

BALLAST

120 to 277v 50/60Hz electronic, except F20 & F40 T12 Bi-Pin which are 120V 60Hz.

Lamp Wattage	Ballast/Socket Type	ANSI Lamp Code	Starting Temp	Maximum Ambient*	Supply Wire
17	T8 Bi-Pin G13	F17-T8	0°F / -18°C	55°C	90°C
32	T8 Bi-Pin G13	F32-T8	-20°F / -29°C	55°C	90°C
14/28	T5 Mini Bi-Pin G5	F14/F28-T5	0°F / -18°C	55°C	90°C
24/54	T5HO Mini Bi-Pin G5	F24/F54-T5HO	-20°F / -29°C	55°C	90°C
35/60	T12HO RDC R17d	F24/F48-T12HO	-20°F / -29°C	40°C	90°C

*Consult factory for optional higher ambient models.

EMERGENCY BATTERY BACKUP BALLAST

Optional, self contained 90 minute minimum for all lamp types. 120 minutes minimum for F32T8 one lamp. Starting temperature 32°F/0°C

ORDERING REFERENCES

PART NUMBER	DESCRIPTION	LAMP TYPE	NO. LAMPS/ NOMINAL LAMP WATTAGE	WEIGHT LBS	PART NUMBER	DESCRIPTION	LAMP TYPE	NO. LAMPS/ NOMINAL LAMP WATTAGE	WEIGHT LBS
FT214	2 ft X 2 ft	F14T5	2 x 14w	11.0	FT232	2 ft X 4 ft	F32T8	2 x 32w	19.5
FT314	2 ft X 2 ft	F14T5	3 x 14w	13.5	FT332	2 ft X 4 ft	F32T8	3 x 32w	22.0
FT414	2 ft X 2 ft	F14T5	4 x 14w	14.0	FT432	2 ft X 4 ft	F32T8	4 x 32w	22.5
FT217	2 ft X 2 ft	F17T8	2 x 17w	11.0	FT235	2 ft X 2 ft	F24T12HO	2 x 35w	16.5
FT317	2 ft X 2 ft	F17T8	3 x 17w	13.5	FT335	2 ft X 2 ft	F24T12HO	3 x 35w	25.0
FT417	2 ft X 2 ft	F17T8	4 x 17w	14.0	FT435	2 ft X 2 ft	F24T12HO	4 x 35w	25.5
FT220	2 ft X 2 ft	F20T12	2 x 20w	12.0	FT240	2 ft X 4 ft	F40T12ES	2 x 34w	20.5
FT320	2 ft X 2 ft	F20T12	3 x 20w	15.5	FT340	2 ft X 4 ft	F40T12ES	3 x 34w	24.0
FT420	2 ft X 2 ft	F20T12	4 x 20w	16.0	FT440	2 ft X 4 ft	F40T12ES	4 x 34w	24.5
FT224	2 ft X 2 ft	F24T5HO	2 x 24w	11.0	FT254	2 ft X 4 ft	F54T5HO	2 x 54w	19.5
FT324	2 ft X 2 ft	F24T5HO	3 x 24w	13.5	FT354	2 ft X 4 ft	F54T5HO	3 x 54w	22.0
FT424	2 ft X 2 ft	F24T5HO	4 x 24w	14.0	FT454	2 ft X 4 ft	F54T5HO	4 x 54w	22.5
FT228	2 ft X 4 ft	F28T5	2 x 28w	19.5	FT260	2 ft X 4 ft	F48T12HO	2 x 60w	25.5
FT328	2 ft X 4 ft	F28T5	3 x 28w	22.0	FT360	2 ft X 4 ft	F48T12HO	3 x 60w	34.0
FT428	2 ft X 4 ft	F28T5	4 x 28w	22.5	FT460	2 ft X 4 ft	F48T12HO	4 x 60w	34.5

SPECIAL OPTIONS

- EMT2* - Emergency Battery Backup Ballast, 1 lamp, 277v max, test switch
- EMT3* - Emergency Battery Backup Ballast, high lumen, 1 lamp, 277v max, test switch
- DIM - Dimming Ballast (not available for F20T12 or T12HO)
- L** - Lamps
- LL** - Long Life Lamps (F54T5HO only)
- RV-1*** - Red Filter Tube with separate ballast (1 lamp)
- RV*** - Red Filter Tube (All lamps)
- BV-1*** - Blue Filter Tube with separate ballast (1 lamp)
- BV*** - Blue Filter Tube (All lamps)
- PAR - Parabolic Louvre, silver
- 225 - 220v 50Hz Ballast (T12 Bi-Pin only)
- 226 - 220v 60Hz Ballast (T12 Bi-Pin only)
- 276 - 277v 60Hz Ballast (T12 Bi-Pin only)

*For T5 & T5HO, EM Ballast is fixed voltage, 120 or 277v, 50/60Hz.

**Lamps are not included unless option "L" or "LL" is specified.

***Not available in 24w, 35w, 54w or 60w.

Notes:

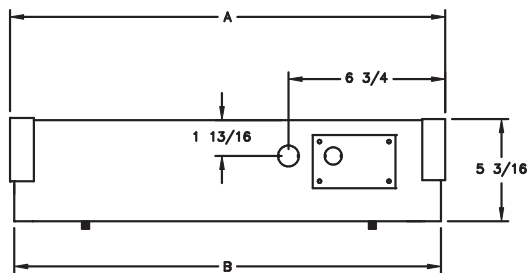
1. Consult factory for options not listed.

ProRec Meridian FT/ml

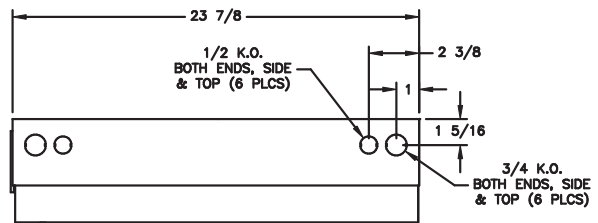
SPARE PARTS

Part No.	Description	Part No.	Description
FX5350	BALLAST 120-277V AC 50/60HZ, 1 x 14 w	FX3568	LAMP, 24w, F24T5HO
FX5174	BALLAST 120-277V AC 50/60HZ, 1 x 17 w	FX3567	LAMP, 54w, F54T5HO
FX5307	BALLAST 120-277V AC 50/60HZ, 1 x 24 w	FX3577	LAMP, 54w, Long Life, F54T5HO
FX5350	BALLAST 120-277V AC 50/60HZ, 1 x 28 w	FX3528	LAMP, 17w, F17T8
FX5221	BALLAST 120-277V AC 50/60HZ, 1 x 32 w	FX3527	LAMP, 32w, F32T8
FX5334	BALLAST 120-277V AC 50/60HZ, 1 x 35 w	FX3506	LAMP, 20w, F20T12
FX5305	BALLAST 120-277V AC 50/60HZ, 1 x 54 w	FX3507	LAMP, 35w, F24T12HO
FX5334	BALLAST 120-277V AC 50/60HZ, 1 x 60 w	FX3504ES	LAMP, 34w, F40T12ES
FX5350	BALLAST 120-277V AC 50/60HZ, 2 x 14 w	FX3505	LAMP, 60w, F48T12HO
FX5340	BALLAST 120-277V AC 50/60HZ, 2 x 17 w	FX2004	LENS, 2 ft x 2 ft
FX5307	BALLAST 120-277V AC 50/60HZ, 2 x 24 w	FX2005	LENS, 2 ft x 4 ft
FX5350	BALLAST 120-277V AC 50/60HZ, 2 x 28 w	FX4060	LAMP HOLDER, Locking (17/20/32/40w)
FX5340	BALLAST 120-277V AC 50/60HZ, 2 x 32 w	FX4064	LAMP HOLDER, T5 & T5HO (14/28w & 24/54w)
FX5334	BALLAST 120-277V AC 50/60HZ, 2 x 35 w	FX4004	LAMP HOLDER, Stationary (35/60w)
FX5305	BALLAST 120-277V AC 50/60HZ, 2 x 54 w	FX4005	LAMP HOLDER, Spring Loaded (35/60w)
FX5338	BALLAST 120-277V AC 50/60HZ, 2 x 60 w	FX4004SET	LAMP HOLDER, Set (1 ea. FX4004, FX4005)
FX5009	BALLAST 120V 60HZ, 1 x 20 w	FX3001	TERMINAL BLOCK, 2 Pole
FX5326	BALLAST 120V 60HZ, 1 x 34 w	CX3070	TERMINAL BLOCK, 4 Pole
FX5326	BALLAST 120V 60HZ, 1 x 40 w	FX2193RED	FILTER TUBE, Red 17w T8
FX5001	BALLAST 120V 60HZ, 2 x 20 w	FX2192RED	FILTER TUBE, Red 20w T12
FX5004	BALLAST 120V 60HZ, 2 x 34 w	FX2195RED	FILTER TUBE, Red 32w T8
FX5004	BALLAST 120V 60HZ, 2 x 40 w	FX2194RED	FILTER TUBE, Red 34w T12
FX3573	LAMP, 14w, F14T5	FX2192BLU	FILTER TUBE, Blue 20w T12
FX3574	LAMP, 28w, F28T5		

DIMENSIONS



SIDE VIEW



END VIEW

	A	B
14w, 17w, 20w, 24w, 35w	24 1/8"	23 3/4"
28w, 32w, 40w, 54w, 60w	48 1/8"	47 3/4"

NOTES