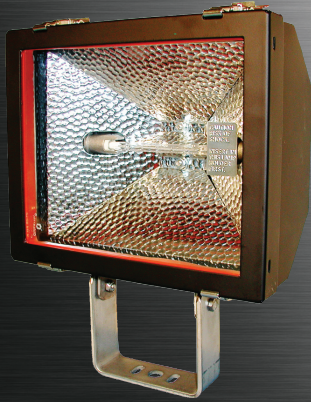


Pro

ProFlood Achiever QS/ss



FEATURES

- 300 - 1500w quartz halogen.
- Rugged yoke mount floodlight with thermal shock resistant tempered glass lens.
- High temperature silicone gasket provides a watertight seal.
- Field replaceable lens and gasket.
- Protective guard available.

APPLICATIONS

- Marine & watertight requirements
- Dusttight requirements
- Waste water treatment plants
- Pulp and paper production
- Aluminium processing facilities
- Salt and potash mines
- Corrosive environments
- Patrol boats
- Coast Guard rescue vessels

APPROVALS

- Conforms to IP66
- Marine Outside Type Saltwater
- ABS

STANDARDS

- UL 1598A - Luminaires for Marine Vessels

TECHNICAL SPECIFICATIONS

HOUSING

Type 304 stainless steel with an electrostatically applied black polyester powder coat finish.

WIND RATING

- QS1603/1605: EPA - 0.9 at vertical.
- QS1610/1615: EPA - 1.54 at vertical.

GUARD

Optional, type 316 stainless steel.

MOUNTING BRACKETS

Stainless steel, trunnion.

ENTRIES

One watertight cable gland and 6 feet of cable.

GASKET

One piece silicone.

HARDWARE

Four stainless steel positive locking spring loaded latches.

REFLECTOR

Hammertone aluminum.

LENS

Tempered glass.

LAMP HOLDERS

Spring loaded.

VOLTAGE OPERATION

300w, 500w models are rated for 120v only.
1000w, 1500w models are rated for 208v, 220v, or 240v.

LAMP TYPES

T3 quartz halogen.
300w, 500w lamps provided.
1000w, 1500w lamps not provided unless voltage is specified.

ORDERING REFERENCES

| PART NUMBER | DESCRIPTION | ANSI LAMP TYPE | WEIGHT LBS |
|-------------|----------------------|----------------|------------|
| QS1603 | 300w Quartz Halogen | T-3 RSC | 10.0 |
| QS1605 | 500w Quartz Halogen | T-3 RSC | 10.0 |
| QS1610* | 1000w Quartz Halogen | T-3 RSC | 18.0 |
| QS1615* | 1500w Quartz Halogen | T-3 RSC | 18.0 |

*Lamps not provided unless operating voltage is specified when ordering.

SPECIAL OPTIONS

- GRD* Guard
- TV* Top/Side Visor
- 208** 208v (1500w only)
- 220** 220v
- 240** 240v

*Can not be field installed, specify at order placement.

**Not available in 300w.

SPARE PARTS

| Part No. | Description |
|---------------|----------------------------------------------|
| INX2149 | LENS, 300w-500w |
| INX2160 | LENS, 1000w-1500w |
| INX4095 | LAMP HOLDERS, 300w-500w |
| INX4084 | LAMP HOLDER, 1000w-1500w |
| GKT6089-30.75 | GASKET, 300w-500w |
| GKT6089-45 | GASKET, 1000w-1500w |
| INX3609 | LAMP, 300w Halogen 120v |
| INX3521 | LAMP, 500w Halogen 120v |
| INX3635 | LAMP, 1000w Halogen 220v |
| INX3645 | LAMP, 1000w Halogen 240v |
| INX3640 | LAMP, 1500w Halogen 208v |
| INX3522 | LAMP, 1500w Halogen 220v |
| INX3646 | LAMP, 1500w Halogen 240v |
| SC30H | SAFETY CABLE, 48" Stainless Steel, Snap Hook |

DIMENSIONS

