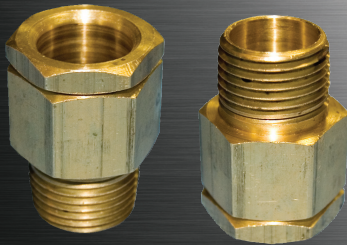


Pro

Accessories

ProGland **TUBE**



APPLICATIONS

- Marine and watertight requirements
- Oil and gas exploration and production
- Ship construction

APPROVAL

- ABS

TECHNICAL SPECIFICATIONS

BODY/PACKING & LOCK NUT/WASHER

Marine brass.

FLAX PACKING

Asbestos free, wax impregnated rovings. Sold separately.

FEATURES

- Marine brass construction.
- Through bulkhead types in three nipple lengths, supplied with locknuts.
- Constructed to conform to marine specifications for armored cable, rubber covered cable and flexible conduit.

STUFFING TERMINAL TUBES MALE AND FEMALE

TERMINAL TUBE	NIPPLE LENGTH	FEMALE TUBE	NPT SIZE	BORE SIZE
INX1500-M1	5/8"	INX1520-F1	3/8"	1/2"
INX1502-M2	5/8"	INX1522-F2	1/2"	5/8"
		INX1524-F3	3/4"	5/8"
INX1506-M4	5/8"	INX1526-F4	3/4"	3/16"
INX1508-M6	5/8"	INX1528-F6	1"	1 1/16"
INX1510-M8	5/8"	INX1530-F8	1 1/4"	1 3/8"
INX1512-M10	5/8"	INX1532-F10	1 1/2"	1 3/8"
INX1516-M12	5/8"	INX1536-F12	2"	2 1/16"
INX1518-M13	5/8"	INX1538-F13	2 1/2"	2 1/2"
INX1575-M14	1"	INX1576-F14	3"	3"
INX1577-M15	1 1/8"	INX1578-F15	3 1/2"	3 1/2"
INX1579-M16	1 1/4"	N/A	4"	4"

FLAX PACKING

Part No.	Size
CX8051-1/8	1/8"
CX8051-1/4	1/4"

THROUGH BULKHEAD STUFFING TUBES

TYPE A	NIPPLE LENGTH	TYPE B	NIPPLE LENGTH	TYPE C	NIPPLE LENGTH	NPS SIZE	BORE SIZE	CLEARANCE HOLE SIZE
INX1501-S1A	1 3/8"	INX1521-S1B	1 7/8"	INX1541-S1C	4 1/2"	3/8"	1/2"	5/8"
INX1503-S2A	1 3/8"	INX1523-S2B	1 7/8"	INX1543-S2C	4 1/2"	1/2"	5/8"	7/8"
		INX1525-S3B	1 7/8"	INX1545-S3C	4 1/2"	3/4"	3/4"	1 1/16"
INX1507-S4A	1 3/8"	INX1527-S4B	1 7/8"	INX1547-S4C	4 1/2"	3/4"	3/16"	1 1/16"
INX1509-S6A	1 1/2"	INX1529-S6B	2 1/8"	INX1549-S6C	4 9/16"	1"	1 1/16"	1 5/16"
INX1511-S8A	1 1/2"	INX1531-S8B	2 1/4"	INX1551-S8C	4 9/8"	1 1/4"	1 3/8"	1 11/16"
INX1513-S10	1 3/8"	INX1533-S10B	2 3/8"	INX1553-S10C	4 3/4"	1 1/2"	1 5/8"	1 15/16"
		INX1535-S11B	2 1/2"	INX1555-S11C	4 13/16"	2"	1 7/8"	2 1/16"
INX1517-S12A	1 3/4"	INX1537-S23B	2 1/2"	INX1557-S12C	4 13/16"	2"	2 1/16"	2 1/16"
INX1519-S13A	2"	INX1539-S13B	2 3/4"	INX1559-S13C	4 15/16"	2 1/2"	2 1/2"	2 7/8"
INX1573-S14A	2 1/4"	INX1574-S14B	3"	INX1560-S14C	5 1/8"	3"	3"	3 1/2"