

THE REST OF THE AMC FAMILY



Steel / Insulated Throat - 105°C

Catalog Number	K.O. Size	Flex Trade Size	AC/MC Cable Range		Throat Opening	Unit Qty.	Std. Pkg.
			Min.	Max.			
AMC-50	1/2"	3/8"	14/2 (.40")	10/3 (.62")	.375"	50	500
AMC-5075	1/2"	1/2"	10/4 (.62")	6/4 (.92")	.565"	25	250
AMC-52	1/2"	3/8"	14/2 (.43")	10/3 (.62")	.560"	25	250
AMC-75	3/4"	3/4"	10/3 (.56")	6/3 (.81")	.560"	25	100

- Tri Drive Screws
- Zinc Plated Steel
- 105°C Insulated Throat
- cULus Listed File No. E20534
- Patented

SEE THE DIFFERENCE THE NEW AMC-50QI



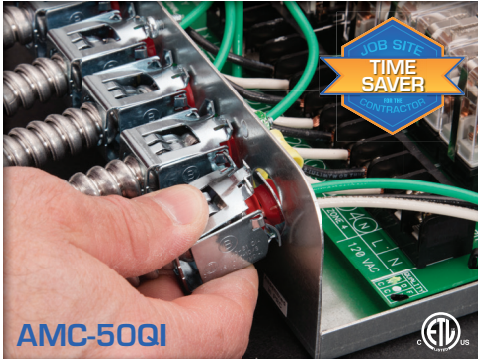
 **BRIDGEPORT**
www.bptfittings.com

Printed in the U.S.A.

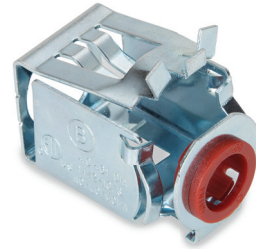
© 2016 Bridgeport Fittings, Inc. All rights reserved. 1/16 7500 BP-STD



AMC-50QI E-Z LOCK™ QUICK INSTALL CONNECTORS



- Lever action
- Easy in; Easy out
- Square design requires less effort to install
- Open pass-through eliminates damage to conductors
- Prefab alternative
- Patented



AMC-50QI Quick Install Connectors

The AMC-50QI is a zinc plated steel quick install connector, used to connect 14/2 to 10/3 (.40" - .61" diameter) AC/MC/MCI-A/HCF/HCFMCI-A and 3/8" FMC cable to box or enclosure. No tools required. Simply snap the connector onto the cable, squeeze the lever and set into the knockout.

cETLus Listed

Zinc Plated Steel

Catalog Number	K.O. Size	Fixed Trade Size	Unit Qty.	Std. Pkg. Qty.
AMC-50QI	1/2"	3/8"	50	500

FOR MORE INFORMATION, VISIT:
WWW.BPTFITTINGS.COM

FOR MORE INFORMATION, VISIT:
WWW.BPTFITTINGS.COM