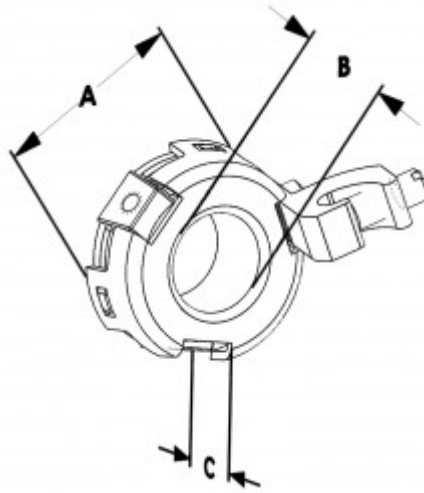


## Locknut, Grounding, Insulated, Zinc Die Cast, Size 3/4 Inch, 14-4 Lug

Bridgeport's new, patented, versatile insulated bonding & grounding locknuts are Listed for use with all of Bridgeport Fittings' EMT and Rigid conduit. Bridgeport's bonding & grounding locknuts provide a secure insulated connection to the enclosure, and 3-tapped mounting pads allow for easy installation. Bridgeport's insulated bonding & grounding locknuts are solving problems when connector or conduit thread lengths are taken up by thick metal or used in place of grounding bushings and locknuts when connectors or conduit threads are too short to accommodate both. Perfect for tight, confined spaces.


[Download Photo](#)

[Download Drawing](#)

[Download Drawing](#)

### Product details

<b>Catalog Number:</b>	162-GI
<b>UPC Number:</b>	78174791162
<b>Primary Materials:</b>	Zinc Die Cast, Tin Plated Aluminum
<b>Finish:</b>	Ball Burnished, Mirror Smooth
<b>Trade Size:</b>	3/4"
<b>Unit Quantity:</b>	10
<b>Standard Package Quantity:</b>	50

### Dimensions

<b>Trade Size:</b>	3/4"
<b>Dimensions A:</b>	1.5
<b>Dimensions B:</b>	0.760
<b>Dimensions C:</b>	0.573

### Certifications & Codes

**Federal Specification Number:** A-A-50553

**UNSPSC:** 39121311

**Nema Standard:** FB-1

**UL Standard:** Listed ETL Conforms to UL STD 514B Certified to CAN/CSA STD. C22.2 No. 18.3