

ACCESSORY FOR SIRIUS 3RM1 3-PHASE BUSBAR
FOR 5 MOTOR STARTERS MODULAR SPACING
22.5MM SCREW-TYPE CONNECTION

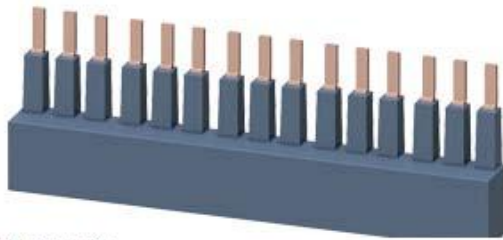




Figure similar

General technical data:		
product brand name		SIRIUS
Product designation		Busbar 5x
Design of the product		for 5 starters
Equipment marking acc. to DIN EN 81346-2		X
Operating current with AC at 480 V acc. to UL 508	A	16

Installation/ mounting/ dimensions:		
mounting position		any
Mounting type		screw fixing
Width	mm	116
Height	mm	41
Depth	mm	12

Certificates/ approvals:			
General Product Approval	Declaration of Conformity	Test Certificates	other
		Type Test Certificates/Test Report	Special Test Certificate
UL	EG-Konf.		Environmental Confirmations

Further information

Information- and Downloadcenter (Catalogs, Brochures,...)
<http://www.siemens.com/industrial-controls/catalogs>

Industry Mall (Online ordering system)

<http://www.siemens.com/industrymall>

Cax online generator

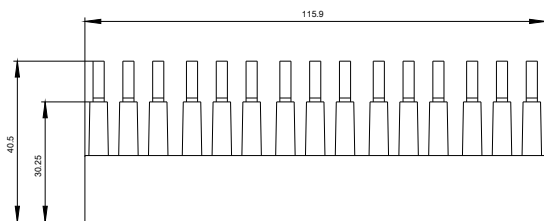
<http://support.automation.siemens.com/WW/CAXorder/default.aspx?lang=en&mfb=3RM19101DA>

Service&Support (Manuals, Certificates, Characteristics, FAQs,...)

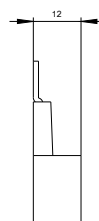
<https://support.industry.siemens.com/cs/ww/en/ps/3RM19101DA>

Image database (product images, 2D dimension drawings, 3D models, device circuit diagrams, EPLAN macros, ...)

http://www.automation.siemens.com/bilddb/cax_de.aspx?mfb=3RM19101DA&lang=en



last modified:



27.04.2015