



SHUNT TRIP AC 20...24V, 50/60HZ, 100% ED, AC 20...70V, 50/60HZ, 5SEC ED, DC 20...70V, 5SEC ED,

Figure similar

General technical data:		
product brand name		SIRIUS
Product designation		shunt release
Size of the circuit-breaker		S00, S0, S2, S3
Design of the product		<kein Wert>
Suitability for use		motor circuit breaker
Protection class IP on the front		IP20
Design of short-circuit protection		fuse
Degree of pollution		3
Insulation voltage Rated value	V	690
Insulation voltage with degree of pollution 3 Rated value	V	690
Ambient temperature		
• during storage	°C	-50 ... +80
• during operation	°C	-20 ... +60
Equipment marking acc. to DIN 40719 extended according to IEC 204-2 acc. to IEC 750		F
Equipment marking acc. to DIN EN 61346-2		F

Auxiliary circuit:		
Number of NC contacts for auxiliary contacts instantaneous contact		0
Number of NO contacts for auxiliary contacts instantaneous contact		0
Number of NO contacts for auxiliary contacts leading contact		0



- Backwards
- upwards
- at the side
- downwards

<kein Wert>  
<kein Wert>  
<kein Wert>  
<kein Wert>

**Required spacing for live parts**

- forwards
- Backwards
- upwards
- downwards
- at the side

<kein Wert>  
<kein Wert>  
<kein Wert>  
<kein Wert>  
<kein Wert>

**Certificates/ approvals:**

**Certificate of suitability**

CE / UL / CSA

General Product Approval	Declaration of Conformity	Test Certificates	Shipping Approval
--------------------------	---------------------------	-------------------	-------------------



[Special Test Certificate](#)



CSA

UL

EG-Konf.

BUREAU VERITAS

LRS

Shipping Approval	other
-------------------	-------



[Declaration of Conformity](#)

[Confirmation](#)

[Environmental Confirmations](#)



[other](#)

RMRS

VDE

**Further information**

**Information- and Downloadcenter (Catalogs, Brochures,...)**

<http://www.siemens.com/industrial-controls/catalogs>

**Industry Mall (Online ordering system)**

<http://www.siemens.com/industrymall>

**Cax online generator**

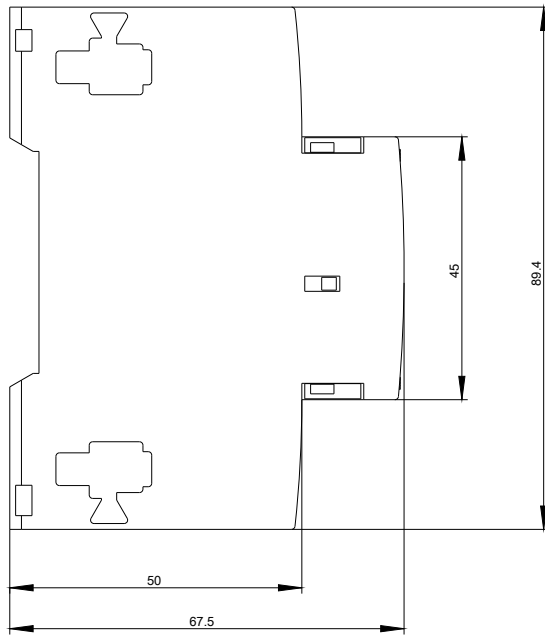
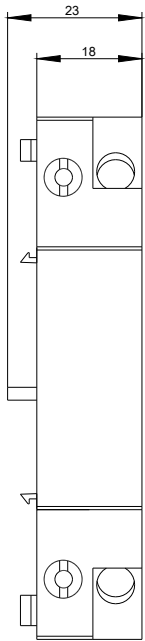
<http://support.automation.siemens.com/WW/CAXorder/default.aspx?lang=en&mfb=3RV19021DB0>

**Service&Support (Manuals, Certificates, Characteristics, FAQs,...)**

<https://support.industry.siemens.com/cs/ww/en/ps/3RV19021DB0>

**Image database (product images, 2D dimension drawings, 3D models, device circuit diagrams, EPLAN macros, ...)**

[http://www.automation.siemens.com/bilddb/cax\\_de.aspx?mfb=3RV19021DB0&lang=en](http://www.automation.siemens.com/bilddb/cax_de.aspx?mfb=3RV19021DB0&lang=en)



last modified:

27.04.2015