



UNDervOLTAGE RELEASE AC 415V, 50HZ, 480V, 60HZ, FOR CIRCUIT-BREAKER, SIZE S00...S3

Figure similar

General technical data:		
product brand name		SIRIUS
Product designation		undervoltage release
Size of the circuit-breaker		S00, S0, S2, S3
Design of the product		<kein Wert>
Suitability for use		motor circuit breaker
Protection class IP on the front		IP20
Design of short-circuit protection		fuse
Degree of pollution		3
Insulation voltage Rated value	V	690
Insulation voltage with degree of pollution 3 Rated value	V	690
Ambient temperature		
• during storage	°C	-50 ... +80
• during operation	°C	-20 ... +60
Equipment marking acc. to DIN 40719 extended according to IEC 204-2 acc. to IEC 750		F
Equipment marking acc. to DIN EN 61346-2		F

Auxiliary circuit:		
Number of NC contacts for auxiliary contacts instantaneous contact		0
Number of NO contacts for auxiliary contacts instantaneous contact		0
Number of NO contacts for auxiliary contacts leading contact		0

Number of CO contacts of the auxiliary contacts instantaneous contact		0
---	--	---

**Control circuit/ Control:**

<b>Type of voltage of the control supply voltage</b>		AC
<b>Control supply voltage frequency</b>		
<ul style="list-style-type: none"> <li>• 1 <ul style="list-style-type: none"> <li>— Rated value</li> <li>— Initial rated value</li> <li>— Final rated value</li> </ul> </li> <li>• 2 Rated value</li> </ul>	<ul style="list-style-type: none"> <li>Hz</li> <li>Hz</li> </ul>	<ul style="list-style-type: none"> <li>&lt;kein Wert&gt;</li> <li>50</li> <li>60</li> <li>&lt;kein Wert&gt;</li> </ul>
<b>Control supply voltage</b>		
<ul style="list-style-type: none"> <li>• 1 <ul style="list-style-type: none"> <li>— for DC <ul style="list-style-type: none"> <li>— Rated value</li> <li>— Initial rated value</li> <li>— Final rated value</li> </ul> </li> <li>— with AC <ul style="list-style-type: none"> <li>— at 50 Hz Rated value</li> <li>— at 50 Hz Initial rated value</li> <li>— at 50 Hz Final rated value</li> <li>— at 60 Hz Rated value</li> <li>— at 60 Hz Final rated value</li> <li>— at 60 Hz Initial rated value</li> </ul> </li> </ul> </li> <li>• 2 <ul style="list-style-type: none"> <li>— for DC Rated value</li> <li>— with AC <ul style="list-style-type: none"> <li>— at 50 Hz Rated value</li> <li>— at 60 Hz Rated value</li> </ul> </li> </ul> </li> </ul>	<ul style="list-style-type: none"> <li>V</li> <li>V</li> </ul>	<ul style="list-style-type: none"> <li>&lt;kein Wert&gt;</li> <li>&lt;kein Wert&gt;</li> <li>&lt;kein Wert&gt;</li> <li>415</li> <li>&lt;kein Wert&gt;</li> <li>&lt;kein Wert&gt;</li> <li>480</li> <li>&lt;kein Wert&gt;</li> <li>&lt;kein Wert&gt;</li> <li>&lt;kein Wert&gt;</li> <li>&lt;kein Wert&gt;</li> <li>&lt;kein Wert&gt;</li> <li>&lt;kein Wert&gt;</li> <li>&lt;kein Wert&gt;</li> <li>&lt;kein Wert&gt;</li> </ul>

**Installation/ mounting/ dimensions:**

<b>Mounting type</b>		snap-on mounting
<b>Width</b>	mm	18.5
<b>Height</b>	mm	90
<b>Depth</b>	mm	68
<b>Required spacing with side-by-side mounting</b>		
<ul style="list-style-type: none"> <li>• forwards</li> <li>• Backwards</li> <li>• upwards</li> <li>• downwards</li> <li>• at the side</li> </ul>		<ul style="list-style-type: none"> <li>&lt;kein Wert&gt;</li> <li>&lt;kein Wert&gt;</li> <li>&lt;kein Wert&gt;</li> <li>&lt;kein Wert&gt;</li> <li>&lt;kein Wert&gt;</li> </ul>
<b>Required spacing for grounded parts</b>		
<ul style="list-style-type: none"> <li>• forwards</li> </ul>		<kein Wert>

- Backwards
- upwards
- at the side
- downwards

<kein Wert>  
<kein Wert>  
<kein Wert>  
<kein Wert>

**Required spacing for live parts**

- forwards
- Backwards
- upwards
- downwards
- at the side

<kein Wert>  
<kein Wert>  
<kein Wert>  
<kein Wert>  
<kein Wert>

**Certificates/ approvals:**

**Certificate of suitability**

CE / UL / CSA

General Product Approval	Declaration of Conformity	Test Certificates	Shipping Approval
--------------------------	---------------------------	-------------------	-------------------



CSA



UL



EG-Konf.

[Special Test Certificate](#)



BUREAU VERITAS



LRS

Shipping Approval	other
-------------------	-------



RMRS

[Environmental Confirmations](#)

[Confirmation](#)

[Declaration of Conformity](#)



VDE

[other](#)

**Further information**

**Information- and Downloadcenter (Catalogs, Brochures,...)**

<http://www.siemens.com/industrial-controls/catalogs>

**Industry Mall (Online ordering system)**

<http://www.siemens.com/industrymall>

**Cax online generator**

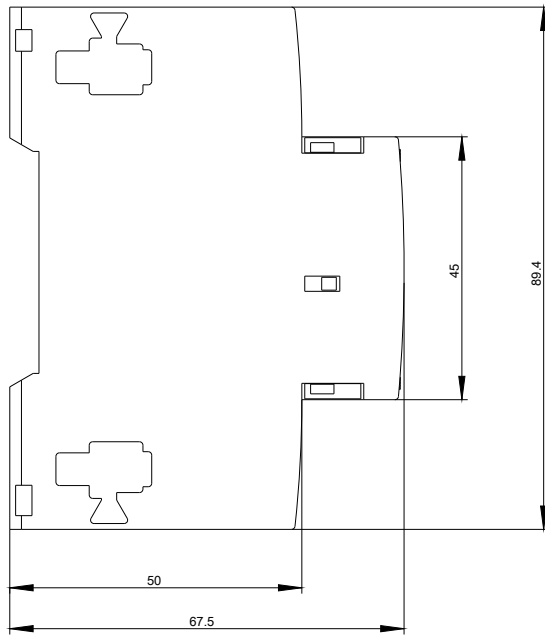
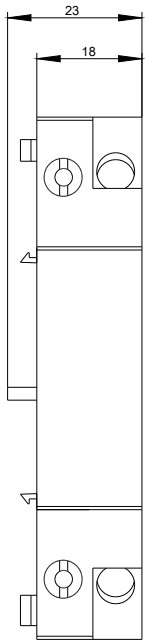
<http://support.automation.siemens.com/WW/CAXorder/default.aspx?lang=en&mfb=3RV19021AV1>

**Service&Support (Manuals, Certificates, Characteristics, FAQs,...)**

<https://support.industry.siemens.com/cs/ww/en/ps/3RV19021AV1>

**Image database (product images, 2D dimension drawings, 3D models, device circuit diagrams, EPLAN macros, ...)**

[http://www.automation.siemens.com/bilddb/cax\\_de.aspx?mfb=3RV19021AV1&lang=en](http://www.automation.siemens.com/bilddb/cax_de.aspx?mfb=3RV19021AV1&lang=en)



last modified:

27.04.2015