

OVERVIEW

The XPoint Wireless Sensor Interface translates data between standard low-voltage wired devices to an XPoint Wireless system. This translation enables standard stations to join an XPoint Wireless lighting control system.

The Sensor Interface incorporates the XPoint Wireless protocol, which is based on the open standard IEEE 802.15.4, providing fail-safe communication by forming a self-healing, adaptive mesh network that maintains connectivity, regardless of site conditions

FEATURES

- Suitable for mounting on an electrical junction box (J-Box)
- Non-volatile memory retains device settings during power outages
- Data transmission from wall stations to XPoint Wireless System
- Detachable snap-lever terminal for rapid, tool-free connection to low-voltage wiring

Warranty

Five-year limited warranty. Complete warranty terms located at: www.acuitybrands.com/CustomerResources/Terms_and_conditions.aspx

Note: Actual performance may differ as a result of end-user environment and application. Specifications subject to change without notice.



*XPoint™ Wireless
Sensor Interface*



A+ Capable

This item is an A+ capable component, which has been designed and tested to provide out-of-the-box luminaire compatibility with simple commissioning, when included as part of an A+ Certified™ Solution.

To learn more about A+, visit www.acuitybrands.com/aplus.



ORDERING INFORMATION

System Type		Controller Type	
XPA	System Type	SIAC2 L2	Sensor Interface - 2 Input Channels for Low Voltage Sensing/ Wall stations

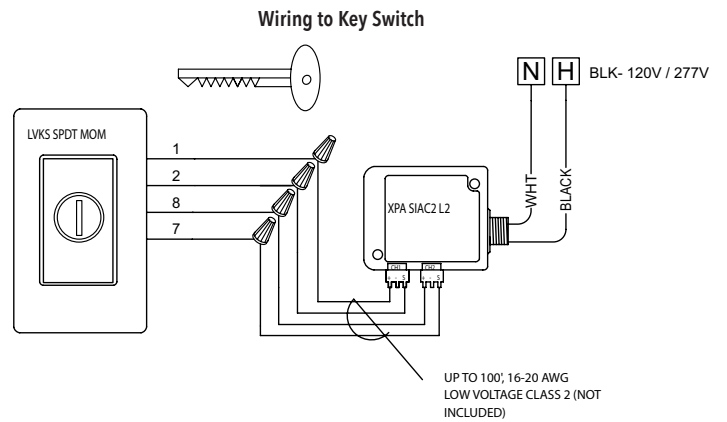
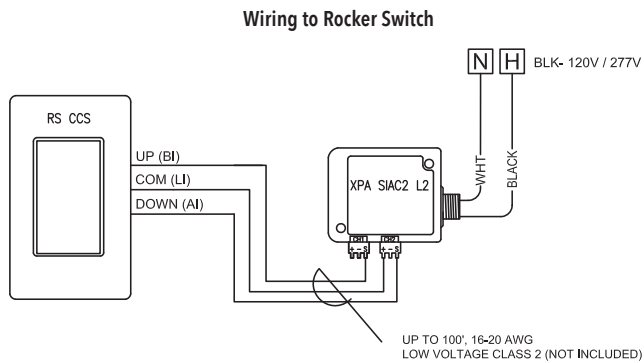
WIRING DIAGRAMS

Red = +24VDC

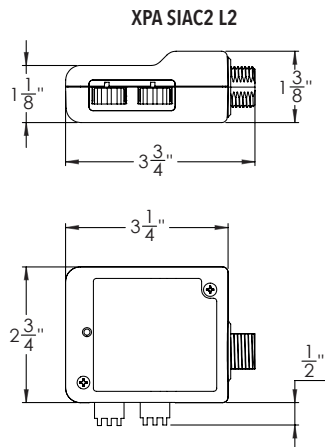
Black = Common

CH1 Blue = On (Quick Press & Release) / Increase Light Level (Hold & Release)

CH2 Blue = Off (Quick Press & Release) / Dim Light Level (Hold & Release)



DIMENSIONS



Terminal blocks only present on SIAC L2

SPECIFICATIONS

Dimensions: 3.25" w x 2.75" h x 1.375" d

Mounting: 1/2" knockout (KO)

Wires: 8" 600 VAC plenum rated, 18 AWG conductors

Power supply inputs: 120-277 VAC

Sensor power supply: 50 mA @ 24 VDC, class 2 rated

Sensor input channels: 0-30 VDC signal (SIAC2 L2)

Sensor input terminals: 16-20 AWG, solid or stranded (SIAC2 L2)

Memory: Configurable programming stored in non-volatile memory

Wireless protocol: Standards-based IEEE 802.15.4 (2.4GHz)

RF transmission output power: +5 dBm

Ambient temperature: -4 - 158° F (-20 - 70° C)

Certifications: FCC ID: S4GEM358L

IC: 8735A-EM358L

Listing: UL and cUL listed