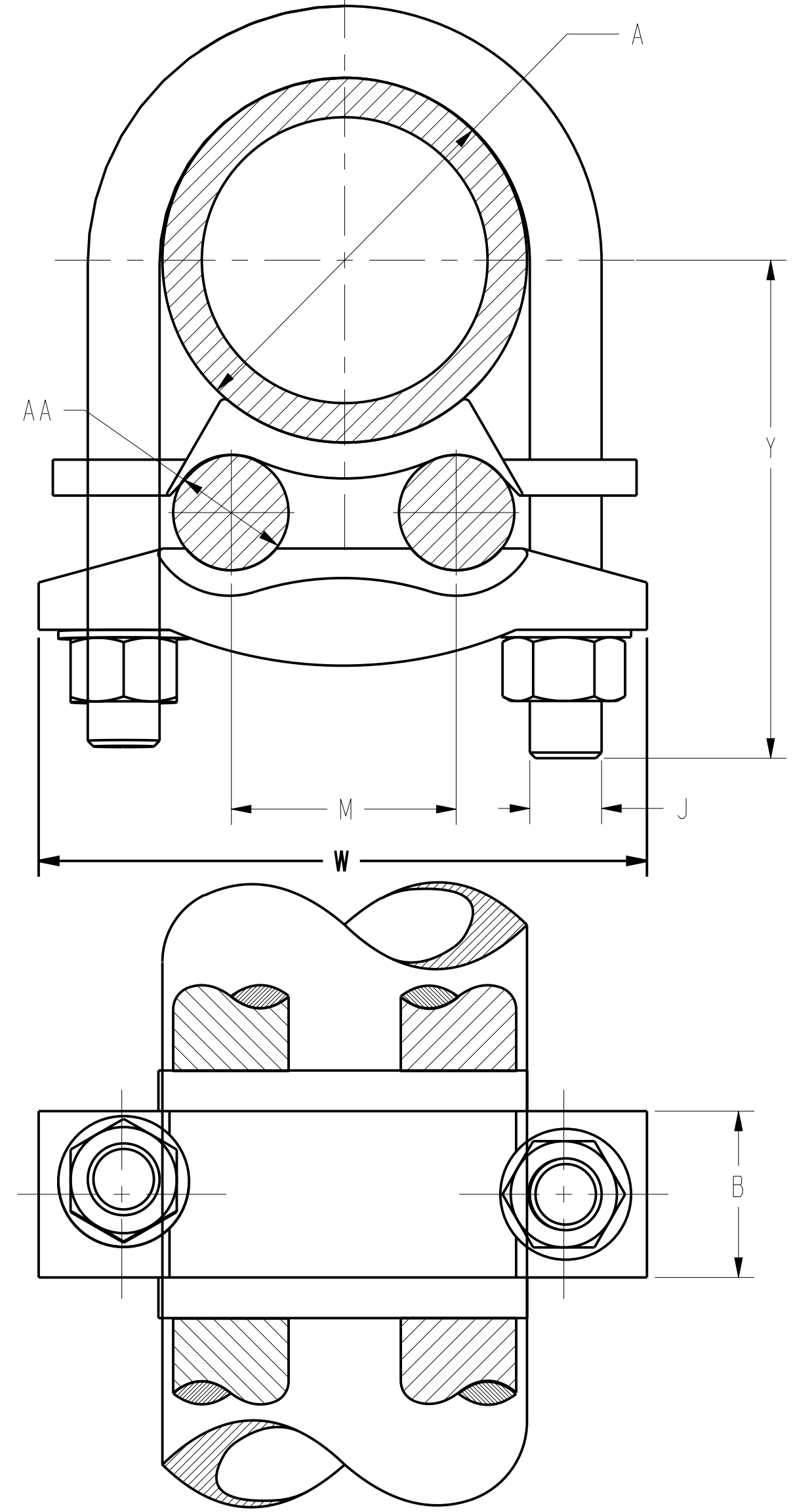


REV	DATE	DESCRIPTION	ECO	BY	C.H.K.
D	03/01/2016 08:37:00 AM	FOCUS REQUEST FPA156071	43123	SM	MB

CONDUCTORS ACCOMMODATED

NOMINAL DIAMETER (in)	I.P.S. PIPE		ROD		AWG		METRIC WIRE SIZE		5 CATALOG NUMBER	B	J	M	W	Y	"U" BOLT	TORQUE Lb*in [N*m]	
	ACTUAL DIA.		ACTUAL DIAMETER		MIN	MAX	MIN	MAX									
	(in)	(mm)	(in)	(mm)													
1"	1.315	[33]	1 1/8" OR 1 1/4"	1.125 OR 1.25	[29] OR [32]	#8 SOL(.128 DIA)	#4 STR(.232 DIA)	10mm ² SOL[2.6]	16mm ² STR[5.1]	GD154C	1.13 [29]	3/8" [10]	.69 [18]	2.63 [67]	2.25 [57]	244	240 [27.0]
1"	1.315	[33]	1 1/8" OR 1 1/4"	1.125 OR 1.25	[29] OR [32]	#4 SOL(.204 DIA)	2/0 STR(.416 DIA)	25mm ² STR[6.5]	50mm ² STR[9.3]	GD1526	1.13 [29]	3/8" [10]	.69 [18]	2.63 [67]	2.25 [57]	244	240 [27.0]
1"	1.315	[33]	1 1/8" OR 1 1/4"	1.125 OR 1.25	[29] OR [32]	2/0 SOL(.365 DIA)	200 Kcmil(.575 DIA)	70mm ² STR[10.9]	95mm ² STR[12.8]	GD1529	1.13 [29]	3/8" [10]	.69 [18]	2.63 [67]	2.25 [57]	244	240 [27.0]
1 1/4"	1.660	[42]	1 3/8" OR 1 1/4"	1.375 OR 1.125	[35] OR [29]	#6 SOL(.129 DIA)	#4 STR(.232 DIA)	16mm ² STR[5.1]	16mm ² STR[5.1]	GD164C	1.25 [32]	3/8" [10]	1.13 [29]	3.00 [76]	2.25 [57]	204	240 [27.0]
1 1/4"	1.660	[42]	1 3/8" OR 1 1/4"	1.375 OR 1.125	[35] OR [29]	#4 SOL(.204 DIA)	2/0 STR(.416 DIA)	25mm ² STR[6.5]	50mm ² STR[9.3]	GD1626	1.25 [32]	3/8" [10]	1.13 [29]	3.00 [76]	2.25 [57]	204	240 [27.0]
1 1/4"	1.660	[42]	1 3/8" OR 1 1/4"	1.375 OR 1.125	[35] OR [29]	2/0 SOL(.365 DIA)	250 Kcmil(.575 DIA)	70mm ² STR[10.9]	120mm ² STR[14.4]	GD1629	1.31 [33]	3/8" [10]	1.00 [25]	3.25 [83]	2.25 [57]	268	240 [27.0]
1 1/2"	1.900	[48]	1 5/8" OR 1 7/8"	1.625 OR 1.875	[41] OR [48]	#8 SOL(.129 DIA)	#4 STR(.232 DIA)	10mm ² SOL[2.6]	16mm ² STR[5.1]	GD174C	1.31 [33]	3/8" [10]	1.19 [30]	3.25 [83]	2.63 [67]	268	240 [27.0]
1 1/2"	1.900	[48]	1 5/8" OR 1 7/8"	1.625 OR 1.875	[41] OR [48]	#4 SOL(.204 DIA)	2/0 STR(.416 DIA)	25mm ² STR[6.5]	50mm ² STR[9.3]	GD1726	1.31 [33]	3/8" [10]	1.25 [32]	3.25 [83]	2.63 [67]	268	240 [27.0]
1 1/2"	1.900	[48]	1 5/8" OR 1 7/8"	1.625 OR 1.875	[41] OR [48]	2/0 SOL(.365 DIA)	250 Kcmil(.575 DIA)	70mm ² STR[10.9]	120mm ² STR[14.4]	GD1729	1.31 [33]	3/8" [10]	1.19 [30]	3.25 [83]	2.63 [67]	268	240 [27.0]
1 1/2"	1.900	[48]	1 5/8" OR 1 7/8"	1.625 OR 1.875	[41] OR [48]	300 kcmil (.630 DIA)	500 Kcmil (.814 DIA)	185mm ² STR[17.8]	240mm ² STR[20.3]	GD1734	1.56 [40]	1/2" [13]	1.00 [25]	3.38 [86]	3.13 [80]	302	480 [54.1]
2"	2.375	[60]	2"	2.00	[51]	#8 SOL(.129 DIA)	#4 STR(.232 DIA)	10mm ² SOL[2.6]	16mm ² STR[5.1]	GD184C	1.31 [33]	3/8" [10]	1.88 [48]	3.69 [94]	2.56 [65]	259	240 [27.0]
2"	2.375	[60]	2"	2.00	[51]	#4 SOL(.204 DIA)	2/0 STR(.416 DIA)	25mm ² STR[6.5]	50mm ² STR[9.3]	GD1826	1.31 [33]	3/8" [10]	1.69 [43]	3.69 [94]	2.56 [65]	257	240 [27.0]
2"	2.375	[60]	2"	2.00	[51]	2/0 SOL(.365 DIA)	250 Kcmil(.575 DIA)	70mm ² STR[10.9]	120mm ² STR[14.4]	GD1829	1.31 [33]	3/8" [10]	1.69 [43]	3.69 [94]	2.56 [65]	257	240 [27.0]
2"	2.375	[60]	2"	2.00	[51]	300 kcmil (.630 DIA)	500 Kcmil (.814 DIA)	185mm ² STR[17.8]	240mm ² STR[20.3]	GD1834	1.56 [40]	1/2" [13]	1.50 [38]	4.06 [103]	3.63 [92]	260	480 [54.1]
2 1/2"	2.875	[73]	2 1/2"	2.50	[64]	#8 SOL(.129 DIA)	#4 STR(.232 DIA)	10mm ² SOL[2.6]	16mm ² STR[5.1]	GD194C	1.38 [35]	3/8" [10]	2.31 [59]	4.19 [106]	3.13 [80]	266	240 [27.0]
2 1/2"	2.875	[73]	2 1/2"	2.50	[64]	#4 SOL(.204 DIA)	2/0 STR(.416 DIA)	25mm ² STR[6.5]	50mm ² STR[9.3]	GD1926	1.38 [35]	3/8" [10]	2.63 [67]	4.19 [106]	3.13 [80]	266	240 [27.0]
2 1/2"	2.875	[73]	2 1/2"	2.50	[64]	2/0 SOL(.365 DIA)	250 Kcmil(.575 DIA)	70mm ² STR[10.9]	120mm ² STR[14.4]	GD1929	1.38 [35]	3/8" [10]	2.19 [56]	4.19 [106]	3.13 [80]	266	240 [27.0]
2 1/2"	2.875	[73]	2 1/2"	2.50	[64]	300 kcmil (.630 DIA)	500 Kcmil (.814 DIA)	185mm ² STR[17.8]	240mm ² STR[20.3]	GD1934	1.56 [40]	1/2" [13]	2.00 [51]	4.56 [116]	3.00 [74]	232	480 [54.1]
2 1/2"	2.875	[73]	2 1/2"	2.50	[64]	550 kcmil (.855 DIA)	750 Kcmil (.998 DIA)	300mm ² STR[22.6]	400mm ² STR[26.1]	GD1939	1.81 [46]	5/8" [16]	1.38 [35]	4.81 [122]	3.13 [80]	356	660 [74.4]
3"	3.500	[89]	3"	3.000	[76]	#8 SOL(.129 DIA)	#4 STR(.232 DIA)	10mm ² SOL[2.6]	16mm ² STR[5.1]	GD204C	1.38 [35]	3/8" [10]	3.25 [83]	4.81 [122]	3.38 [86]	258	240 [27.0]



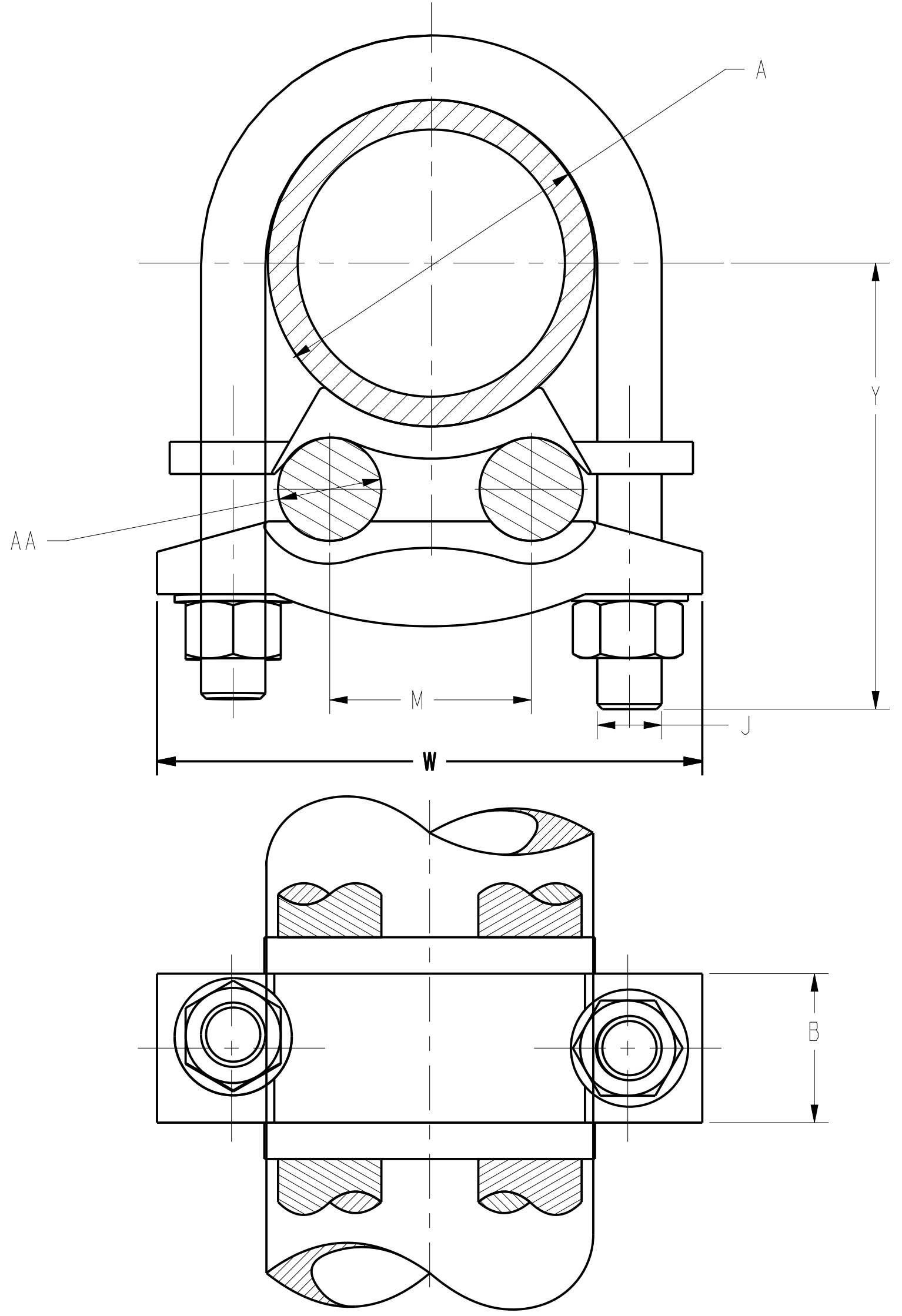
- NOTES:
1. MATERIAL : CAST COPPER ALLOY, DURIUM #6 (U-BOLT, HEX NUTS & S.P.L.W).
 2. UL 467 LISTED, FILE NO. E9999. ACCEPTABLE FOR DIRECT BURIAL.
 3. SUITABLE FOR BURIAL IN GROUND OR CONCRETE.
 4. DIMENSIONS IN BRACKETS [] ARE IN MILLIMETERS, ROUNDED OFF TO THE NEAREST MILLIMETER, UNLESS OTHERWISE NOTED, AND ARE FOR REFERENCE ONLY.
 5. FOR TIN PLATING ADD SUFFIX "TN".

TO ORDER BURNDY® PRODUCTS CALL		GROUND CONNECTOR	
UNITED STATES 1-800-346-4175 (LONDONDERRY, NH)		ITEM NO: SEE TABLE	CAT. NO: GD--(TABLE)
CANADA: 1-800-361-6975 (QUEBEC) 1-800-387-6487 (ALL OTHER PROVINCES)		DRAWN BY: ABD 6/16/54	CHECKER: DJ 6/16/54
FOR PRODUCT INFO: http://www.burndy.com		DSN APPVL: EJJ 6/16/54	MFG APPVL: EJJ 6/16/54
		QA APPVL: A LLOYD 12/3/93	MKT APPVL: K WOO 11/11/93
		SCALE: 3:2	PROD FAM: --
		PROJECT #: FPN1506071	SIZE
		DOCUMENT TYPE: Sales	D
		REL LEVEL: Released	
		DRAWING NO	REV
		SD013775	D
		SHEET 1 OF 2	

REV: PFC200

REV	DATE	DESCRIPTION	ECO	BY	C.H.K.
D	03/01/2016 08:37:00 AM	FOCUS REQUEST FPA156001	43123	SM	MB

CONDUCTORS ACCOMMODATED										5 CATALOG NUMBER	B	J	M	W	Y	"U" BOLT	TORQUE [Lb*in [N*m]]
A					AA												
I.P.S. PIPE			ROD		AWG		METRIC WIRE SIZE										
NOMINAL DIAMETER (IN)	ACTUAL DIA.		NOMINAL DIAMETER (in)	ACTUAL DIAMETER		MIN	MAX	MIN	MAX								
3"	3.500	[89]	3"	3.00	[76]	#4 SOL(.204 DIA)	2/0 STR(.416 DIA)	25mm ² STR[6.5]	50mm ² STR[9.3]	GD2026	1.50 [38]	3/8" [10]	2.75 [70]	4.81 [118]	3.38 [83]	258	240 [27.0]
3"	3.500	[89]	3"	3.00	[76]	2/0 SOL(.365 DIA)	250 Kcmil(.575 DIA)	70mm ² STR[10.9]	120mm ² STR[14.4]	GD2029	1.50 [38]	3/8" [10]	2.88 [73]	4.81 [118]	3.38 [83]	258	240 [27.0]
3"	3.500	[89]	3"	3.00	[76]	300 kcmil(.630 DIA)	500 Kcmil(.814 DIA)	185mm ² STR[17.8]	240mm ² STR[20.3]	GD2034	1.56 [40]	1/2" [13]	2.31 [59]	5.31 [130]	4.00 [98]	282	480 [54.1]
3"	3.500	[89]	3"	3.00	[76]	550kcmil(.855 DIA)	750 Kcmil(.998 DIA)	300mm ² STR[22.6]	400mm ² STR[26.1]	GD2039	1.88 [48]	5/8" [16]	2.31 [59]	5.31 [130]	4.13 [101]	---	660 [74.4]
3"	3.500	[89]	3"	3.00	[76]	800 kcmil(1.031 DIA)	1000 Kcmil(1.152 DIA)	400mm ² STR[26.1]	500mm ² STR[28.3]	GD2044	2.00 [51]	5/8" [16]	2.31 [59]	5.31 [130]	4.25 [104]	---	660 [74.4]
3 1/2"	4.000	[102]	3 1/2"	3.50	[89]	#8 SOL(.129 DIA)	#4 STR(.232 DIA)	10mm ² SOL[2.6]	16mm ² STR[5.1]	GD214C	1.44 [37]	3/8" [10]	2.31 [59]	5.31 [130]	3.75 [92]	264	240 [27.0]
3 1/2"	4.000	[102]	3 1/2"	3.50	[89]	#4 SOL(.204 DIA)	2/0 STR(.416 DIA)	25mm ² STR[6.5]	50mm ² STR[9.3]	GD2126	1.50 [38]	3/8" [10]	2.31 [59]	5.31 [130]	3.75 [92]	264	240 [27.0]
3 1/2"	4.000	[102]	3 1/2"	3.50	[89]	2/0 SOL(.365 DIA)	250 Kcmil(.575 DIA)	70mm ² STR[10.9]	120mm ² STR[14.4]	GD2129	1.50 [38]	3/8" [10]	2.31 [59]	5.31 [130]	3.75 [92]	264	240 [27.0]
3 1/2"	4.000	[102]	3 1/2"	3.50	[89]	300 kcmil(.630 DIA)	500 Kcmil(.814 DIA)	185mm ² STR[17.8]	240mm ² STR[20.3]	GD2134	1.56 [40]	1/2" [13]	3.13 [80]	5.69 [139]	3.25 [80]	436	480 [54.1]
3 1/2"	4.000	[102]	3 1/2"	3.50	[89]	550kcmil(.855 DIA)	750 Kcmil(.998 DIA)	300mm ² STR[22.6]	400mm ² STR[26.1]	GD2139	1.88 [48]	5/8" [16]	2.88 [73]	6.06 [148]	4.88 [120]	373	660 [74.4]
3 1/2"	4.000	[102]	3 1/2"	3.50	[89]	800 kcmil(1.031 DIA)	1000 Kcmil(1.152 DIA)	400mm ² STR[26.1]	500mm ² STR[28.3]	GD2144	2.00 [51]	5/8" [16]	2.75 [70]	6.06 [148]	4.88 [120]	373	660 [74.4]
4"	4.500	[114]	4"	4.00	[102]	#8 SOL(.129 DIA)	#4 STR(.232 DIA)	10mm ² SOL[2.6]	16mm ² STR[5.1]	GD224C	1.56 [40]	3/8" [10]	4.19 [106]	5.94 [146]	3.69 [90]	261	240 [27.0]
4"	4.500	[114]	4"	4.00	[102]	#4 SOL(.204 DIA)	2/0 STR(.416 DIA)	25mm ² STR[6.5]	50mm ² STR[9.3]	GD2226	1.63 [41]	3/8" [10]	3.75 [95]	5.81 [142]	3.69 [90]	261	240 [27.0]
4"	4.500	[114]	4"	4.00	[102]	2/0 SOL(.365 DIA)	250 Kcmil(.575 DIA)	70mm ² STR[10.9]	120mm ² STR[14.4]	GD2229	1.63 [41]	3/8" [10]	3.69 [94]	5.81 [142]	3.69 [90]	261	240 [27.0]
4"	4.500	[114]	4"	4.00	[102]	300 kcmil(.630 DIA)	500 Kcmil(.814 DIA)	150mm ² STR[16.0]	240mm ² STR[20.3]	GD2234	1.38 [35]	1/2" [13]	3.31 [84]	6.19 [152]	4.00 [98]	262	480 [54.1]
4"	4.500	[114]	4"	4.00	[102]	550kcmil(.855 DIA)	750 Kcmil(.998 DIA)	300mm ² STR[22.6]	400mm ² STR[26.1]	GD2239	1.88 [48]	5/8" [16]	3.63 [92]	6.56 [161]	4.13 [101]	377	660 [74.4]
4"	4.500	[114]	4"	4.00	[102]	800 kcmil(1.031 DIA)	1000 Kcmil(1.152 DIA)	400mm ² STR[26.1]	500mm ² STR[28.3]	GD2244	2.00 [51]	5/8" [16]	3.25 [83]	6.56 [161]	4.13 [101]	377	660 [74.4]
1/2" OR 3/4"	.840 OR 1.050 [21] OR [27]		7/8" OR 1"	.875 OR .25	[22] OR [25]	#8 SOL(.129 DIA)	#4 STR(.232 DIA)	10mm ² SOL[2.6]	16mm ² STR[5.1]	GD114C	1.13 [29]	5/8" [16]	3.25 [83]	2.38 [58]	1.75 [43]	222	660 [74.4]
6"	6.625	[168]	--	--	--	#4 SOL(.204 DIA)	2/0 STR(.416 DIA)	25mm ² STR[6.5]	50mm ² STR[9.3]	GD8626	1.63 [41]	1/2" [13]	6.03 [153]	8.19 [201]	4.31 [106]	275	480 [54.1]
-			3/4"	.75	[19]	300 kcmil(.630 DIA)	500 Kcmil(.814 DIA)	150mm ² STR[16.0]	240mm ² STR[20.3]	GD6434	1.56 [40]	1/2" [13]	1.00 [25]	3.59 [88]	3.69 [90]	302	480 [54.1]
6"	6.625	[168]	--	--	--	2/0 SOL(.365 DIA)	250 Kcmil(.575 DIA)	70mm ² STR[10.9]	120mm ² STR[14.4]	GD8629	1.63 [41]	1/2" [13]	5.81 [148]	8.31 [211]	4.31 [106]	275	480 [54.1]



NOTES:
 1. MATERIAL : CAST COPPER ALLOY, DURIUM #6 (U-BOLT, HEX NUTS & S.P.L.W).
 2. UL 467 LISTED, FILE NO. E9999. ACCEPTABLE FOR DIRECT BURIAL.
 3. SUITABLE FOR BURIAL IN GROUND OR CONCRETE.
 4. DIMENSIONS IN BRACKETS [] ARE IN MILLIMETERS, ROUNDED OFF TO THE NEAREST MILLIMETER, UNLESS OTHERWISE NOTED, AND ARE FOR REFERENCE ONLY.
 5. FOR TIN PLATING ADD SUFFIX "TN"

TO ORDER BURNDY® PRODUCTS CALL		GROUND CONNECTOR	
UNITED STATES		ITEM NO:	SEE TABLE
1-800-346-4175 (LONDONDERRY, NH)		CAT. NO:	GD--(TABLE)
CANADA:		DRAWN BY:	R PERREAULT 5/24/94
1-800-387-6487 (ALL OTHER PROVINCES)		CHECKER:	--
FOR PRODUCT INFO: http://www.burndy.com		DSN APPVL:	G DITROIA 11/11/93
		MFG APPVL:	--
		QA APPVL:	A LLOYD 12/3/93
		MKT APPVL:	K WOO 11/11/93
		PROD FAM:	--
		PROJECT #:	FPN1506071
		SIZE:	D
		DOCUMENT TYPE:	Sales
		REL LEVEL:	Released
		DRAWING NO:	SD013775
		REV:	D
		SCALE:	3:2
		SHEET:	2 OF 2

REV: PE0200