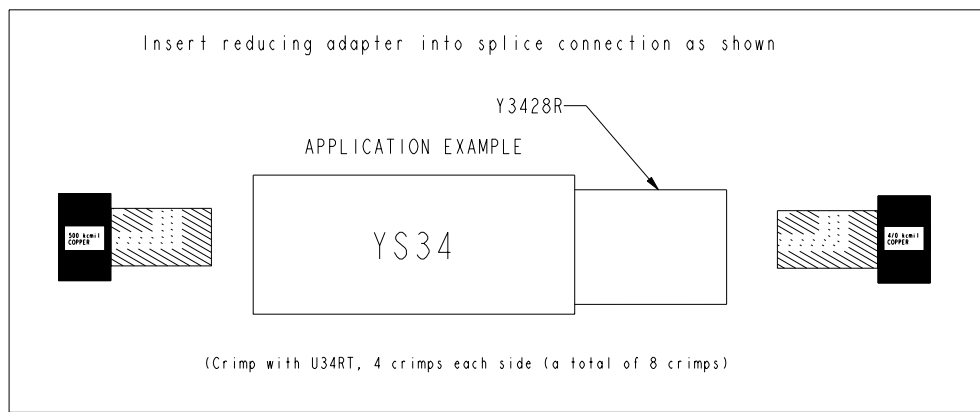
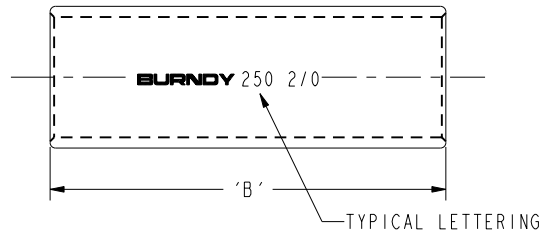
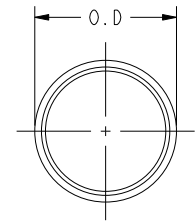


REV	DATE	DESCRIPTION	ECO	BY	C'H'K.
E	04/26/2013 00:00:00 AM	CAT#s ADDED TO THE TABLE	31435	DK	MA

REDUCER ADAPTER SLEEVES

FROM	CONDUCTOR		CATALOG NO.	O.D. MAX.	"B"	FROM	CONDUCTOR		CATALOG NO.	O.D. MAX.	"B"
	TO						TO				
#6	#14 STR. (.073 DIA.)		Y6C14R	.185	1.12	350kcmil	1/0 STR. (.373 DIA.)		Y3125R	.687	2.00
	#10 STR. (.116 DIA.)		Y6C10R				2/0 STR. (.416 DIA.)		Y3126R		
#4	#14 STR. (.073 DIA.)		Y4C14R	.233	1.12	350kcmil	4/0 STR. (.528 DIA.)		Y3128R	.749	2.12
	#10 STR. (.114 DIA.)		Y4C10R				250kcmil (.575 DIA.)		Y3129R		
	#8 STR. (.146 DIA.)		Y4C8CR				300kcmil (.630 DIA.)		Y3130R		
	#6 STR. (.184 DIA.)		Y4C6CR				3/0 STR. (.470 DIA.)		Y3227R		
#2	#14 STR. (.073 DIA.)		Y2C14R	.293	1.25	400kcmil	4/0 STR. (.528 DIA.)		Y3227R	.757	2.50
	#10 STR. (.116 DIA.)		Y2C10R				250kcmil (.575 DIA.)		Y3229R		
	#8 STR. (.146 DIA.)		Y2C8CR				300kcmil (.630 DIA.)		Y3230R		
	#6 STR. (.184 DIA.)		Y2C6CR				350kcmil (.681 DIA.)		Y3231R		
	#4 STR. (.232 DIA.)		Y2C4CR				#6 STR. (.184 DIA.) OR		Y346CR		
	#4 SOL. (.204 DIA.)		Y2C4WR				#8 STR. (.146 DIA.) OR				
#1	#6 STR. (.184 DIA.)		Y1C6CR	.345	1.38	500kcmil	#6 SOL. (.162 DIA.)			.821	2.50
	#4 STR. (.232 DIA.)		Y1C4CR				#4 STR. (.232 DIA.)		Y344CR		
1/0	#8 STR. (.146 DIA.)		Y258CR	.380	1.38	500kcmil	#3 STR. (.260 DIA.)		Y343CR	.910	2.69
	#6 STR. (.184 DIA.)		Y256CR				#2 STR. (.291 DIA.)		Y342CR		
	#6 STR. (.184 DIA.)		Y256CRG2				#1 STR. (.330 DIA.)		Y341CR		
	#4 STR. (.252 DIA.)		Y254CR				1/0 STR. (.373 DIA.)		Y3425R		
	#4 STR. (.252 DIA.)		Y254CRG3				2/0 STR. (.416 DIA.)		Y3426R		
	#4 SOL. (.204 DIA.)		Y254WR				3/0 STR. (.470 DIA.)		Y3427R		
	#2 STR. (.291 DIA.)		Y252CR				4/0 STR. (.528 DIA.)		Y3428R		
	#2 STR. (.291 DIA.)		Y252CRG4				250kcmil (.575 DIA.)		Y3429R		
2/0	#6 STR. (.184 DIA.)		Y266CR	.430	1.50	600kcmil	300kcmil (.630 DIA.)		Y3430R	.932	2.81
	#4 STR. (.232 DIA.)		Y264CR				350kcmil (.681 DIA.)		Y3431R		
	#2 STR. (.291 DIA.)		Y262CR				400kcmil (.728 DIA.)		Y3432R		
	#1 STR. (.330 DIA.)		Y261CR				450 kcmil (.772 DIA.)		Y3433R		
3/0	1/0 STR. (.373 DIA.)		Y2625R	.436	1.50	650 kcmil	350kcmil (.681 DIA.)		Y3631R	.971	2.81
	#4 STR. (.232 DIA.)		Y274CR				400kcmil (.728 DIA.)		Y3632R		
	#2 STR. (.291 DIA.)		Y272CR				500kcmil (.814 DIA.)		Y3634R		
4/0	#1 STR. (.330 DIA.)		Y271CR	.477	1.50	700kcmil	550 kcmil (.855 DIA.)		Y3735R	1.017	2.88
	1/0 STR. (.373 DIA.)		Y2725R				3/0 STR. (.470 DIA.)		Y3827R		
	#6 STR. (.184 DIA.)		Y286CR				4/0 STR. (.528 DIA.)		Y3928R		
	#8 STR. (.146 DIA.)						250kcmil (.575 DIA.)		Y3929R		
	#6 SOL. (.162 DIA.)						350kcmil (.681 DIA.)		Y3931R		
	#5 STR. (.207 DIA.)		Y285CR				400kcmil (.728 DIA.)		Y3932R		
	OR #4 SOL. (.204 DIA.)		Y284WR				500kcmil (.814 DIA.)		Y3934R		
	#4 SOL. (.204 DIA.)						500kcmil (.834 DIA.)		Y3934RG3		
	#4 STR. (.231 DIA.)		Y284CR				600kcmil (.893 DIA.)		Y3936R		
	OR 40 kcmil		Y283CR				600kcmil (.893 DIA.)		Y3936RG3		
	#3 STR. (.261 DIA.)						650kcmil (.929 DIA.)		Y3937R		
	OR #2 SOL. (.258 DIA.)		Y282CR				500kcmil (.814 DIA.)		Y3934RG1		
	#2 STR. (.291 DIA.)						600kcmil (.893 DIA.)		Y3936RG1		
	OR 80 kcmil		Y281CR				650kcmil (.929 DIA.)		Y3937RG2		
	#1 STR. (.330 DIA.)						1000kcmil	750kcmil (.998 DIA.)			
	1/0 STR. (.373 DIA.)		Y2825R				1250kcmil	1000kcmil (1.152 DIA.)			
1/0 STR. (.373 DIA.)		Y2825RG1W	1500kcmil	1000kcmil (1.152 DIA.)		Y4644R					
2/0 STR. (.416 DIA.)		Y2826R	2000 kcmil	1500 kcmil (1.412 DIA.)		Y4846R					
3/0 STR. (.470 DIA.)		Y2827R									
250kcmil	#4 STR. (.231 DIA.)		Y294CR	.582	1.62	250kcmil				1.159	3.00
	#2 STR. (.291 DIA.)		Y292CR								
	#1 STR. (.330 DIA.)		Y291CR								
	1/0 STR. (.373 DIA.)		Y2925R								
	2/0 STR. (.416 DIA.)		Y2926R								
300kcmil	3/0 STR. (.470 DIA.)		Y2927R	.592	2.00	300kcmil	4/0 STR. (.528 DIA.)		Y2928R	1.296	3.19
	#2 STR. (.291 DIA.)		Y302CR								
	#4 STR. (.232 DIA.)		Y304CR								
	1/0 STR. (.373 DIA.)		Y3025R								
	#2/0 STR. (.416 DIA.)		Y3026R								
250kcmil	#3/0 STR. (.470 DIA.)		Y3027R	.637	2.00	250kcmil	#4/0 STR. (.528 DIA.)		Y3028R	1.440	3.19
	#4/0 STR. (.528 DIA.)		Y3028R								
	250kcmil (.575 DIA.)		Y3029R								



NOTES:

- MATERIAL: COPPER
- FINISH: TIN PLATED
- Y-R REDUCING ADAPTORS ARE DESIGNED TO ALLOW LARGE SIZE COPPER TERMINAL, SPLICES, AND T-TAPS TO BE USED ON SMALLER CONDUCTOR SIZES. TO USE, SIMPLY INSERT THE REDUCER INTO THE BARREL, INSERT THE WIRE INTO THE REDUCER ADAPTOR AND CRIMP THE OUTER BARREL USING ITS RECOMMENDED TOOLING. FOR USE WITH YS, YA; YS-L, YA-L; YST CONNECTORS. FIELD CUT TO FIT SHORTER LENGTH COMPRESSION BARRELS.

TO ORDER BURNDY® PRODUCTS CALL  
 UNITED STATES  
 1-800-346-4175 (LONDONDERRY, NH)  
 CANADA:  
 1-800-361-6975 (QUEBEC)  
 1-800-387-6487 (ALL OTHER PROVINCES)  
 FOR PRODUCT INFO: <http://www.burndy.com>

REDUCER ADAPTER SLEEVES	
ITEM NO: --	REV
CAT. NO: Y-R & Y-RL [SEE TABLE]	SD016040-01
DRAWN BY: D.J.S 06/10/55	E
CHECKER: L.H 06/23/55	
DSN APPVL: --	
MFG APPVL: --	
QA APPVL: --	
MKT APPVL: --	
PROJ #:	SCALE: 4:1
REL LEVEL: Released	

REV: PE0200