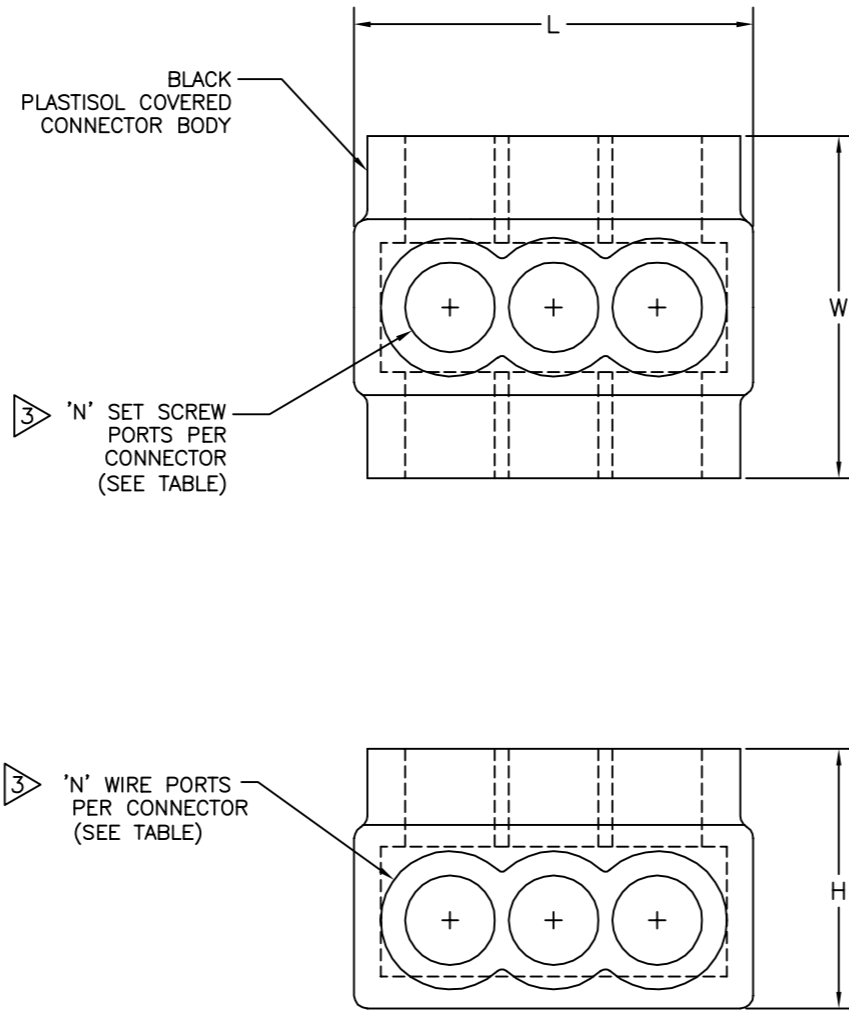
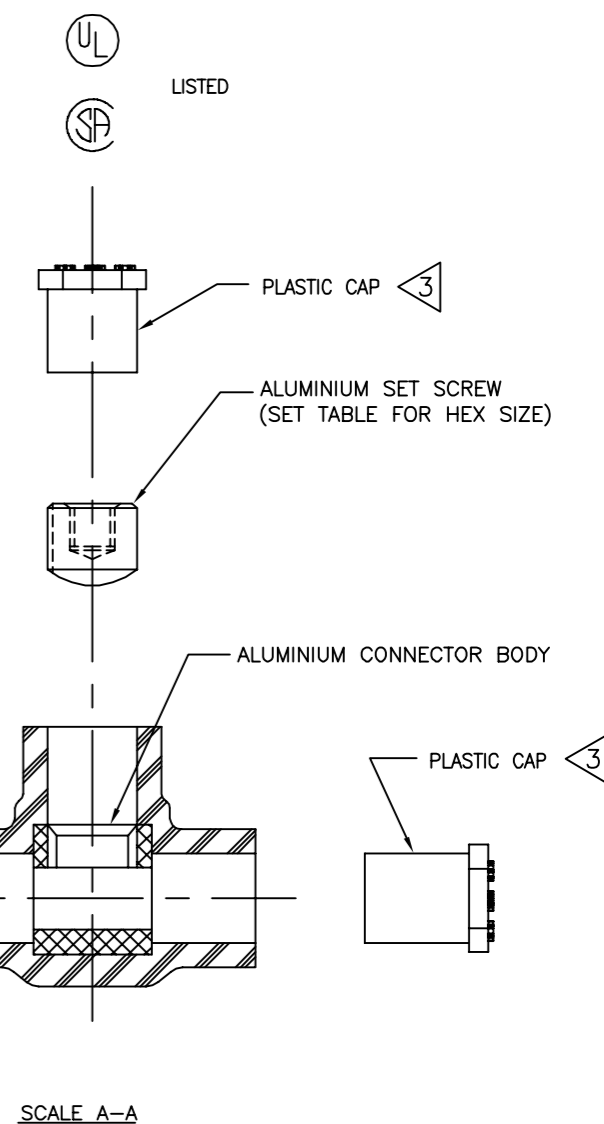


DRAWING NO. <b>SD214514</b>						
CATALOG NO.	WIRE RANGE (AWG/kcmil)	L	W	H	HEX KEY	N
1PLD350-2	#10-350	2.22 [147]	3.00 [67]	2.50 [54]	5/16	2
1PLD350-3	#10-350	3.13 [96]	3.00 [76]	2.50 [64]	5/16	3
1PLD350-4	#10-350	4.04 [126]	3.00 [76]	2.50 [64]	5/16	4
1PLD350-5	#10-350	4.95 [157]	3.00 [76]	2.50 [64]	5/16	5
1PLD350-6	#10-350	5.86 [187]	3.00 [76]	2.50 [64]	5/16	6
1PLD350-8	#10-350	7.68 [100]	3.00 [76]	2.50 [70]	5/16	8
1PLD350-10	#10-350	9.50 [130]	3.00 [76]	2.50 [70]	5/16	10
1PLD350-12	#10-350	11.32 [160]	3.00 [76]	2.50 [70]	5/16	12

FEATURES	BENEFITS
PLASTISOL COVERED AL6061-T6 BODY	SAVES TIME, LOWERS INSTALLATION COSTS, ELIMINATES TAPING.
OXIDE-INHIBITOR IS PRE-INSTALLED	INHIBITS MOISTURE AND CONTAMINANTS FROM ENTERING THE CONTACT AREA
RANGE-TAKING	REDUCES THE NUMBER OF CONNECTORS CARRIED IN INVENTORY



REV.	DATE	DESCRIPTION	ECO	BY	C'K'D.
C	12/14/12	TORQUE VALUE INCLUDED.	29771	PB	MA



**NOTES:**

- THIS DRAWING TO BE INTERPRETED PER ANSI Y14.5M.
- CONNECTORS ARE SUPPLIED INDIVIDUALLY LABELED. LABEL INFORMATION INCLUDES CATALOG NUMBER, AND BARCODE.
- END CAPS INSTALLED ON WIRE PORTS AND SET SCREW PORTS.
- ALL CONNECTORS UL LISTED, CSA CERTIFIED FOR AL9CU, 90°C APPLICATIONS, UNLESS OTHERWISE NOTED.
- DIMENSIONS IN BRACKETS [ ] ARE IN MILLIMETERS ROUNDED OFF TO THE NEAREST MILLIMETER, UNLESS OTHERWISE NOTED, AND ARE FOR REFERENCE ONLY.
- UV RATED INSULATION MATERIAL.
- TORQUE SET SCREWS TO 275 IN/LB.

TO ORDER BURNDY® PRODUCTS CALL UNITED STATES: 1-800-346-4175 (LONDONDERRY, NH) CANADA: 1-800-361-6975 (QUEBEC) 1-800-387-6487 (ALL OTHER PROVINCES) FOR PRODUCT INFO: <a href="http://www.burndy.com">http://www.burndy.com</a>		<b>UV BLACK DISTRIBUTION CONNECTORS</b>	
		ITEM NO: N/A	
CAT NO: 1PLD350--SERIES (TABLE)		SCALE: N/A	
DRAWN BY: D RAJKUMAR 4/24/02		CHECKER: K HENRY 5/23/02	
DSN APPVL: G DITROIA 3/6/02		MFG APPVL: T BONINA 2/27/02	
QC APPVL: J BRODEUR 3/5/02		MKT APPVL: A ZWIT 2/27/02	
PROD FAM: ---	PROJECT #: ---	DRAWING NO	REV
DOCUMENT TYPE: Sales	SIZE: D	SD214514	C
REL LEVEL: AutoCAD		SHEET 5 OF 13	