

VINYL (FIG. 1)							
ITEM NUMBER	CATALOG NO. ²	INSULATION COLOR	WIRE SIZE	NEMA Tab Size	WIDTH (W)	LENGTH (L)	WIRE STRIP LENGTH
10001563	FQP10F25X03D	YELLOW	10 - 12 AWG	.250 x .032	.25 [6]	.97 [25]	3/8"
10001555	FQP14F25X03D	BLUE	14 - 16 AWG	.250 x .032	.25 [6]	.90 [23]	3/8"
10001551	FQP14F18X02D	BLUE	14 - 16 AWG	.187 x .020	.18 [5]	.80 [20]	3/8"
10001562	FQP18F25X03D	RED	18 - 22 AWG	.250 x .032	.25 [6]	.90 [23]	3/8"
10001558	FQP18F18X02D	RED	18 - 22 AWG	.187 x .020	.18 [5]	.80 [20]	3/8"
50004098	FQP14F11X03D	BLUE	14 - 16 AWG	.110 x .020	.11 [3]	.79 [20]	3/8"
50004099	FQP18F11X03D	RED	18 - 22 AWG	.110 x .020	.11 [3]	.79 [20]	3/8"
10001559	FQP18F18X03D	RED	16 - 22 AWG	.187 x .032	.197 [5]	.79 [20]	3/8"

NYLON (FIG. 2)							
ITEM NUMBER	CATALOG NO. ²	INSULATION COLOR	WIRE SIZE	NEMA Tab Size	WIDTH (W)	LENGTH (L)	WIRE STRIP LENGTH
10001548	FQN10F25X03D	YELLOW	10 - 12 AWG	.250 X .032	.250 [6]	.98 [25]	3/8"
10001547	FQN14F25X03D	BLUE	14 - 16 AWG	.250 X .032	.250 [6]	.90 [23]	3/8"
10001546	FQN18F25X03D	RED	18 - 22 AWG	.250 X .032	.250 [6]	.90 [23]	3/8"
50004097 ⁴	FQN14F18X02D	BLUE	14 - 16 AWG	.187 X .020	.187 [5]	.90 [23]	3/8"
50024294 ⁴	FQN18F18X02D	RED	18 - 22 AWG	.187 X .020	.187 [5]	.90 [23]	3/8"

NOTES:

1. DIMENSIONS IN BRACKETS [] ARE IN MILLIMETERS, ROUNDED OFF TO THE NEAREST MILLIMETER AND ARE FOR REFERENCE ONLY, UNLESS OTHERWISE SPECIFIED.

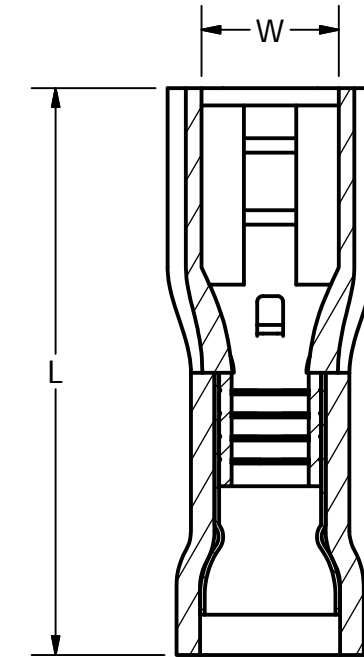
² SUFFIX "D" DENOTES DISTRIBUTOR PACKAGING. REPLACE SUFFIX "D" WITH "B" FOR BULK PACKAGING.

3. CONNECTORS ARE cULus LISTED FOR USE IN CANADA AND THE U.S.

⁴ THIS CONNECTOR IS NOT cULus LISTED.

5. INSTALLATION TOOLING: MRE1022NV, Y10D, Y1022.

REV	DATE	DESCRIPTION	ECO	BY	C'H'K.
E	05/09/2014	CAT. NO. FQN18F18X03D ADDED.	35871	RB	KC



SECTION A-A

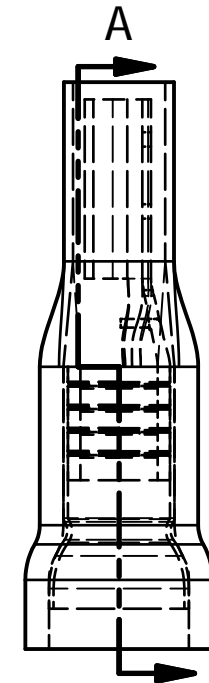
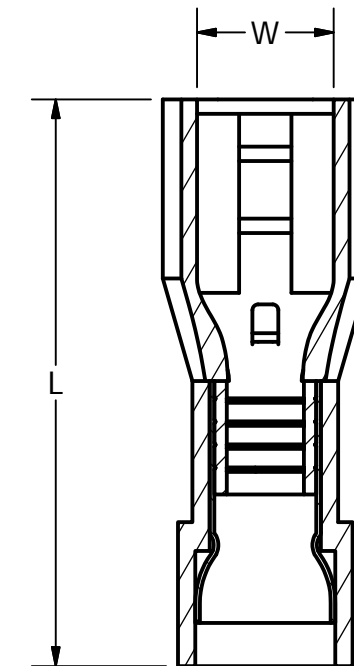


FIG. 1



SECTION B-B

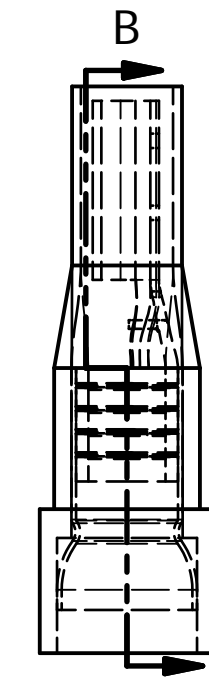


FIG. 2

TO ORDER BURNDY PRODUCTS CALL		FULLY INSULATED FEMALE DISCONNECTS	
UNITED STATES 1-800-346-4175 (LONDONDERRY, NH)		ITEM NO: SEE TABLE	
CANADA: 1-800-361-6975 (QUEBEC) 1-800-387-6487 (ALL OTHER PROVINCES)		CAT. NO: FQ--F-- (SEE TABLE) ²	
FOR PRODUCT INFO: http://www.burndy.com		DRAWN BY: E.MARTIN 4/18/2012	
		CHECKER:	
		DSN APRVL: E.MARTIN	
		MFG APRVL:	
		QA APRVL: --	
		MKT APRVL: --	
		PROD FAM: CM&R	
		DRAWING NO	
		50000750	
		REV	
		E	
		SHEET 1 OF 1	