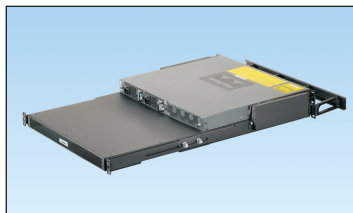


# Modular ToR Switch Inlet Duct for Net-Access™ S-Type Cabinets

## specifications

The inlet duct shall be designed using CFD modeling and thermal lab verification, and shall be compatible with Cisco® 4948, 4928 and 4924 switches. The 1 RU switch shall optimize thermal performance by channeling air directly from the cold aisle to the switch inlet decreasing operating temperature. The passive ducting system shall leverage the switch fans resulting in a more energy efficient solution, reducing energy and operating costs. The modular duct shall be capable of being installed in retro-fit applications without disrupting existing in-cabinet equipment and cabling.



## technical information

**Dimensions:** 29.0"L x 18.9"W x 3.4"H (737mm x 480mm x 86mm)

## key features and benefits

<b>Provides cool air into the switch</b>	Protects equipment and increases energy efficiency in ToR high density server applications
<b>Cisco compatible product via uniform and low impedance flow distribution within switch:</b> <i>WS-C4948 (-S and -E)</i> <i>WS-C4948-10GE (-S and -E)</i> <i>WS-C4928-10GE</i> <i>ME-4924-10GE</i>	Verified interoperability for increased network reliability
<b>Prevents hot spots and allows installation of high-density server cabinets close together in new builds or existing data centers</b>	Reduces the need for extra data center real estate and extra Cap/Ex for CRAH units
<b>Integral switch fans bring cool air to the switch</b>	No additional moving parts, fans, or power required for a more reliable, efficient, economical and environmentally friendly system
<b>Allows for installation after switch and other equipment is installed</b>	Eliminates the requirement to replace or disturb existing cabinets, equipment and infrastructure for lower capital expenditures and minimized risk
<b>Manages cables from the ports on the switch</b>	Provides a complete cable and thermal management solution
<b>Enables installation in standard 19 in. 4-post racks and cabinets</b>	Eliminates the requirement to replace cabinets and existing infrastructure for lower capital expenditures
<b>Allows for installation in cabinets with mounting depths from 27" – 30" (686mm – 762mm)</b>	Allows greater network flexibility and reliability
<b>Allows access to power supplies and fan blades</b>	Allows ease of maintenance for lowest installed cost

## applications

Top of Rack (ToR) switches, such as the Cisco 4948, enable multi-layered aggregation of high-performance servers. When deployed within server cabinets or racks, the modular duct provides a cool air path to the air

intakes on the sides of the switch. By providing a path for cool air to the switch, Data Center temperature set points can be raised – resulting in higher energy efficiencies and lower operating costs.

Modular ToR switch inlet duct has tested compatible with Cisco 4948, 4928 and 4924 switches.

Go to [www.panduit.com/cisco1](http://www.panduit.com/cisco1) for disclaimer.

^ Cisco is a registered trademark of Cisco Technology, Inc.

**www.panduit.com**

### Modular ToR Switch Inlet Duct

**Inlet duct:** CDE1

### Net-Access™ S-Type Cabinets for use in Hot Aisle/Cold Aisle Applications

#### Single front perforated door, split perforated rear doors

<b>600mm W x 42 RU x 1067mm D:</b>	S621*^†
<b>600mm W x 45 RU x 1067mm D:</b>	S651*^†
<b>600mm W x 48 RU x 1067mm D:</b>	S681*^†
<b>600mm W x 42 RU x 1219mm D:</b>	S622*^†
<b>600mm W x 45 RU x 1219mm D:</b>	S652*^†
<b>600mm W x 48 RU x 1219mm D:</b>	S682*^†
<b>700mm W x 42 RU x 1067mm D:</b>	S721*^
<b>700mm W x 45 RU x 1067mm D:</b>	S751*^
<b>700mm W x 48 RU x 1067mm D:</b>	S781*^
<b>700mm W x 42 RU x 1219mm D:</b>	S722*^
<b>700mm W x 45 RU x 1219mm D:</b>	S752*^
<b>700mm W x 48 RU x 1219mm D:</b>	S782*^
<b>800mm W x 42 RU x 1067mm D:</b>	S821*^
<b>800mm W x 45 RU x 1067mm D:</b>	S851*^††
<b>800mm W x 48 RU x 1067mm D:</b>	S881*^
<b>800mm W x 42 RU x 1219mm D:</b>	S822*^
<b>800mm W x 45 RU x 1219mm D:</b>	S852*^
<b>800mm W x 48 RU x 1219mm D:</b>	S882*^

#### Accessories

<b>D-ring kit for full length POU bracket 25mm (1 inch) deep:</b>	S1DR
<b>D-ring kit for full length POU bracket 60mm (2.4 inch) deep:</b>	S2DR
<b>L-ring kit for full length POU bracket 40mm (1.6 inch) deep:</b>	S1LR
<b>L-ring kit for full length POU bracket 70mm (2.8 inch) deep:</b>	S2LR
<b>45 RU 1070mm split/hinged side panel – black:</b>	S51SPH
<b>45 RU 1070mm split/hinged side panel – white:</b>	S51SPHW
<b>45 RU 1200mm split/hinged side panel – black:</b>	S52SPH

# Modular ToR Switch Inlet Duct for Net-Access™ S-Type Cabinets

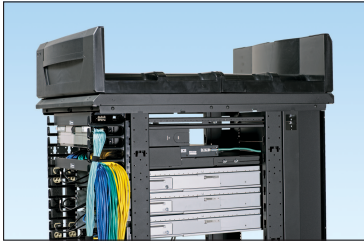


Figure 1. In-cabinet application

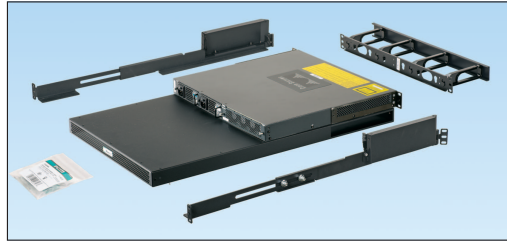
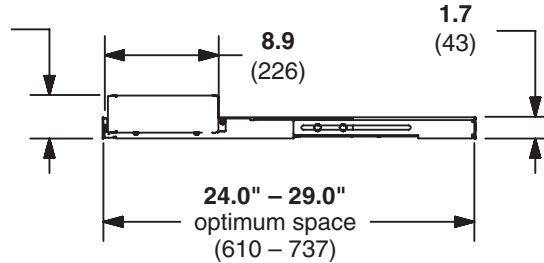
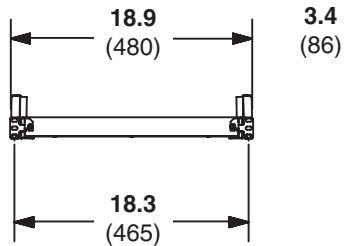
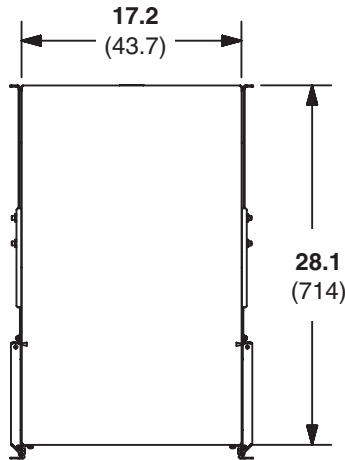


Figure 2. CDE and switch exploded view



CDE1

Dimensions are in inches. (Dimensions in parentheses are metric).

## Accessories

<b>45 RU 1200mm split/hinged side panel – white:</b>	S52SPHW
<b>Casters:</b>	SCSTR4
<b>45 RU finger kit – 100mm (4") long:</b>	SN15F
<b>45 RU finger kit – 150mm (6") long:</b>	SN25F
<b>Cool Boot® Cabinet Top Air Sealing Fitting for 6.5 x 6.5 cabinet top opening:</b>	CTGN6X6
<b>Cool Boot® Cabinet Top Air Sealing Fitting for 3.5 x 5 cabinet top opening:</b>	CTGN3X5
<b>Cool Boot® Cabinet Top Air Sealing Fitting for 1 x 5 cabinet top opening:</b>	CTGN1X5
<b>Cabinet top cable protection bezel for 6.5 x 6.5 cabinet top opening:</b>	CTNBZL6X6
<b>Cabinet top cover and cable protection bezel for 3.5 x 5 cabinet top opening:</b>	CTCN3X5
<b>Cabinet top cover and cable protection bezel for 1 x 5 cabinet top opening:</b>	CTCN1X5

\*Indicates Net-Access™ S-Type Cabinet. Replace \* with: 1 = 1 side panel, 2 = 2 side panels, or 9 = no side panels.

^Indicates optional colors. Replace ^ with: B = Black or W = White.

†Add suffix P to the end of the part number for Zero RU QuickNet™ Vertical Patching Rails.

††Add suffix F to the end of the part number for cable management.

## WORLDWIDE SUBSIDIARIES AND SALES OFFICES

PANDUIT CANADA  
Markham, Ontario  
cs-cdn@panduit.com  
Phone: 800.777.3300

PANDUIT EUROPE LTD.  
London, UK  
cs-emea@panduit.com  
Phone: 44.20.8601.7200

PANDUIT SINGAPORE PTE. LTD.  
Republic of Singapore  
cs-ap@panduit.com  
Phone: 65.6305.7575

PANDUIT JAPAN  
Tokyo, Japan  
cs-japan@panduit.com  
Phone: 81.3.6863.6000

PANDUIT LATIN AMERICA  
Guadalajara, Mexico  
cs-la@panduit.com  
Phone: 52.33.3777.6000

PANDUIT AUSTRALIA PTY. LTD.  
Victoria, Australia  
cs-aus@panduit.com  
Phone: 61.3.9794.9020

For a copy of Panduit product warranties, log on to [www.panduit.com/warranty](http://www.panduit.com/warranty)

For more information

Visit us at [www.panduit.com](http://www.panduit.com)

Contact Customer Service by email: [cs@panduit.com](mailto:cs@panduit.com)  
or by phone: 800.777.3300

**PANDUIT®**

©2013 Panduit Corp.  
ALL RIGHTS RESERVED.  
RKSP106--WW-ENG  
1/2013