

Made in the  
USA, since  
1972

# *PRODUCT CATALOG*



*Nichols Manufacturing*

*3985 West 12th Avenue  
P.O. Box 23321  
Eugene, OR 97402*

*541-485-6050      fax 541-485-3617*

*800-248-3378*

*sales@nicholsmanufacturing.com*

*www.nicholsmanufacturing.com*



**Nichols Manufacturing**  
**Eugene, Oregon**

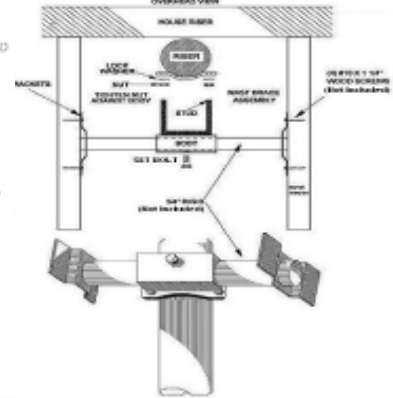
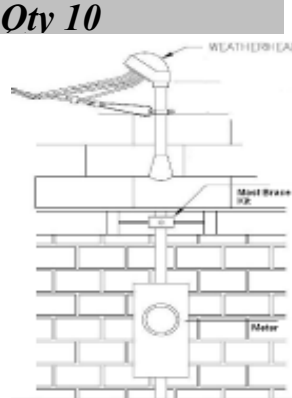
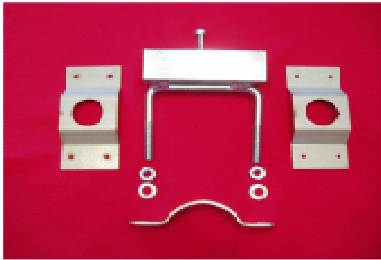
**541-485-6050**  
**fax 541-485-3617**

## Mast Brace Kits

When our Roof Mount Mast Kits might not work as well due to Roofing Material (i.e. Tile). Our Eave truss mounted Mast Brace Kit consist of two galv truss brackets, nuts/washers, lock bolt, Zinc plated pipe sleeve assembly and 12 GA steel galv. pipe strap.

**Part # Description- Case Qty 10**

**MBK2** 1-1/2" - 2" Mast  
**MBK3** 2-1/2" - 3-1/2" Mast



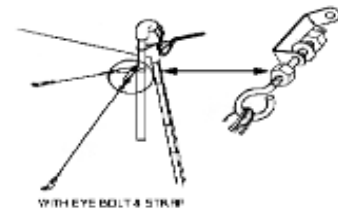
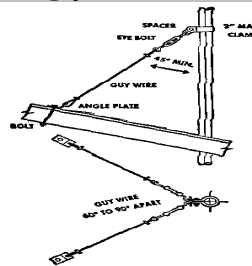
## Mast Guying Kits

Our kits consist of two 6' cables with brackets, mast clamp and two carriage bolts. The cables are 1/8" aircraft quality with 7 x 7 stranding. We construct our clamps from 12GA galv steel which meets or exceeds ASTM A653 specifications.

**Special cable lengths available upon request**

**Part # Description- Case Qty 10**

**MK1** 1" Mast  
**MK114** 1-1/4" Mast  
**MK112** 1-1/2" Mast  
**MK2** 2" Mast  
**MK212** 2-1/2" Mast  
**MK3** 3" Mast  
**MK312** 3-1/2" Mast  
**MK4** 4" Mast

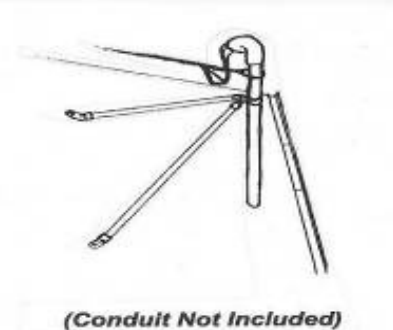


## Rigid Mast Guying Kits

The rigid kits consist of 4 brackets (that attach to your threaded 3/4" conduit), one mast clamp and two 6" Carriage bolts. We construct our brackets from 12GA steel which is welded to the couplers then zinc plated.

**Part # Description- Case Qty 10**

**MKR1** 1" Mast  
**MKR114** 1-1/4" Mast  
**MKR112** 1-1/2" Mast  
**MKR2** 2" Mast  
**MKR212** 2-1/2" Mast  
**MKR3** 3" Mast  
**MKR312** 3-1/2" Mast  
**MKR4** 4" Mast



**"MKRxxx-SS" For "Set-Screw" Model.** This new model allows the installer to cut their Rigid conduit to any desired length, without requiring threaded pipe ends.