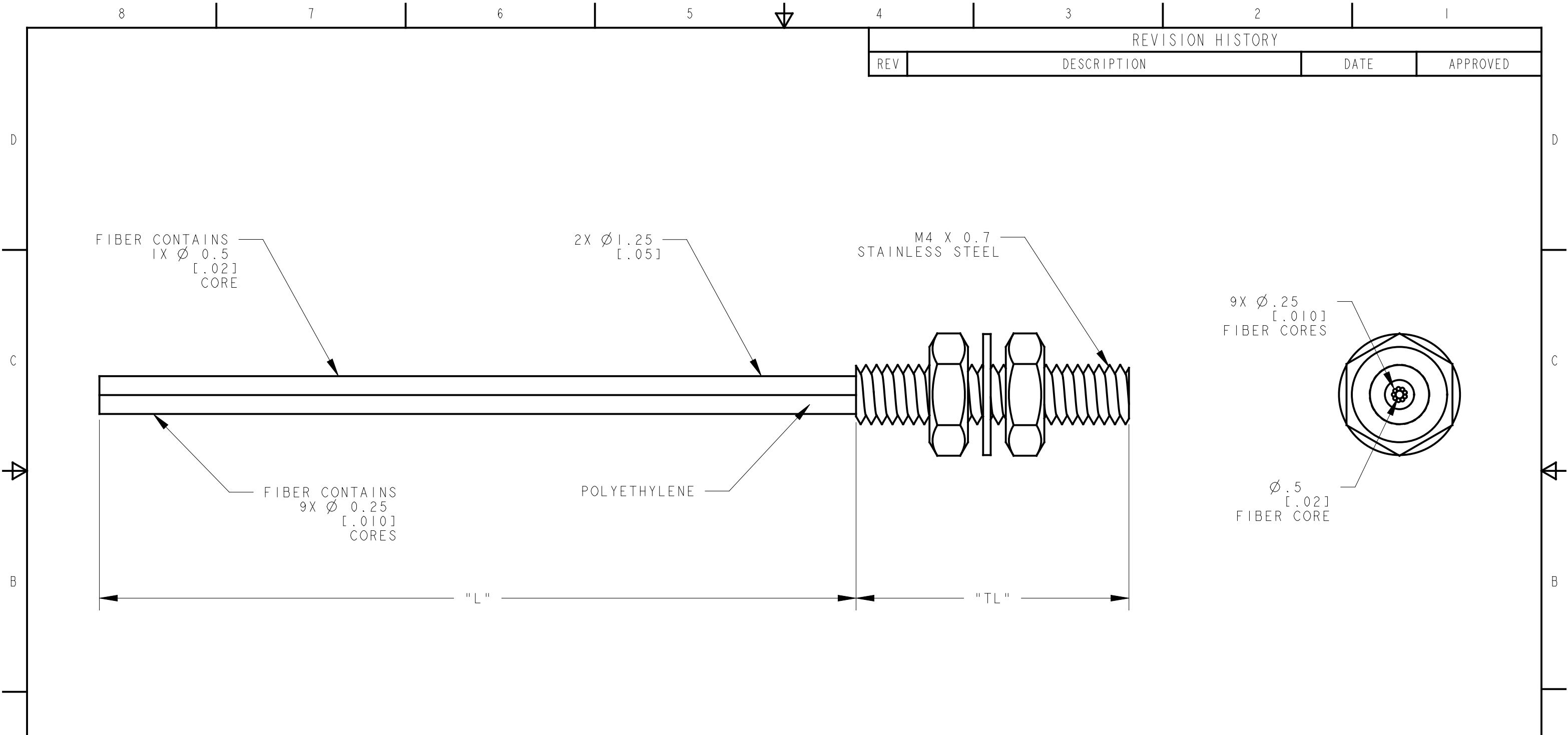



REVISION HISTORY			
REV	DESCRIPTION	DATE	APPROVED



MODEL NO.	"L"	"TL"	P/N
PBCT230U	10000 [394]	18.0 [.71]	19364
PBCT26UMT7.6	2000 [79]	7.6 [.30]	00000
PBCT215U	5000 [197]	18.0 [.71]	68630
PBCT26UMT7	2000 [79]	7.1 [.28]	00000
PBCT26U	2000 [79]	18.0 [.71]	45091

Dimensions are Millimeters [inches] <b>TOLERANCES</b> (Unless Otherwise Specified) X = ±0.5mm X.X = ±0.25 X.XX = ±0.12mm [X.X = ±.1"] [.XX = ±.01"] [.XXX = ±.005"] ANGLE = ±3° "L" = 40mm/Meter [.5"/Foot]	 <p>BANNER ENGINEERING Corp.          9717 10th Ave. North          Minneapolis, MN 55441          Tel # 763-544-3164          Fax # 763-544-3573          www.bannerengineering.com</p>		
		This drawing is the property of BANNER ENGINEERING Corp. and is proprietary in general and in detail. Its contents shall not be revealed to outside parties without the written consent of BANNER.	
PBCT26U <span style="float: right;">PLASTIC FIBEROPTIC ASSEMBLY &amp; MOD'S</span>			
3-21-97	I OF I	45091	-