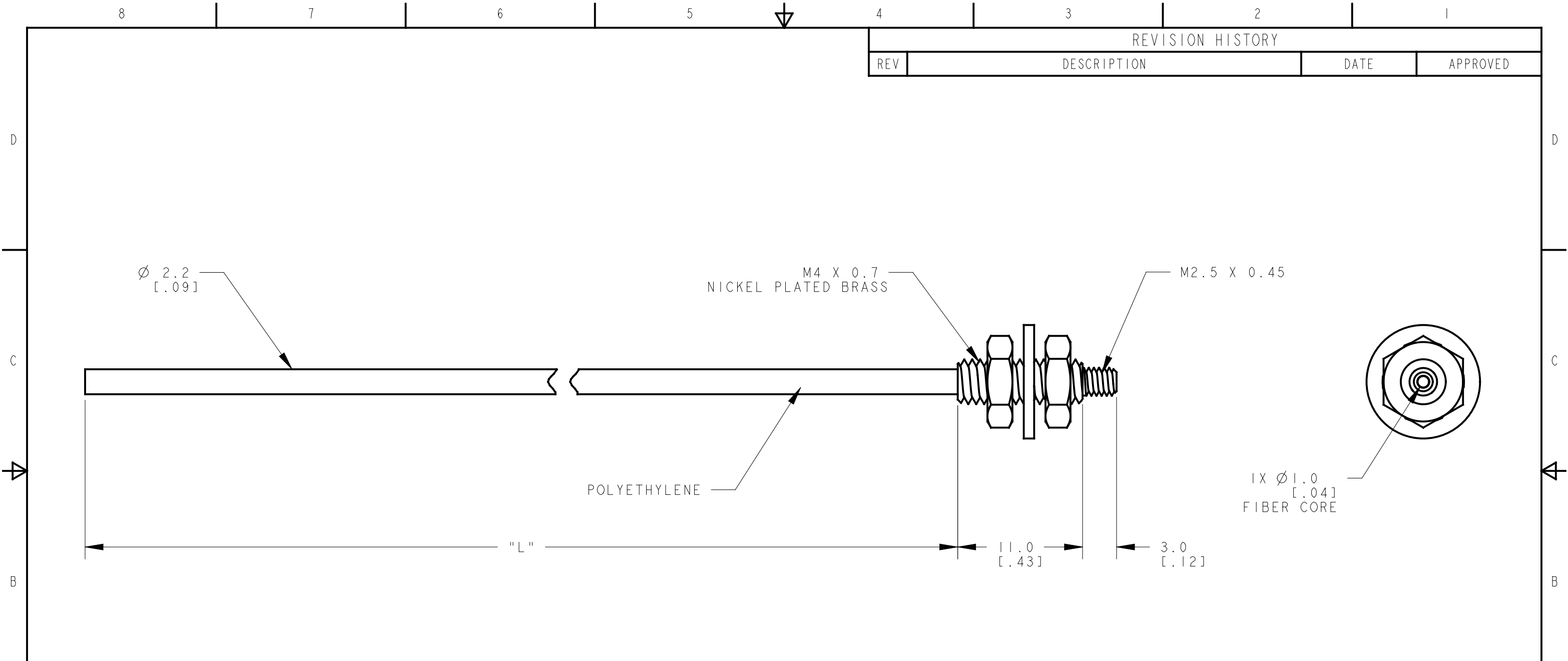
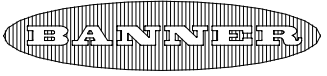


REVISION HISTORY			
REV	DESCRIPTION	DATE	APPROVED



MODEL NO.	"L"	P/N
PIT4.53UHF	160 [6.3]	14934
PIT41UHF	305 [12]	00000
PIT460UHF	20000 [787]	00000
PIT450UHF	15240 [600]	00000
PIT425UHF	7620 [300]	00000
PIT430UHF	10000 [394]	68654
PIT415UHF	5000 [197]	61155
PIT46UHF	2000 [79]	51783

NOTES:
 1. SUFFIX "HF" DENOTES HIGH-FLEX CABLE - VERY SMALL BEND RADIUS PERMISSIBLE BEFORE TRANSMISSION LOSS.

Dimensions are Millimeters [inches] TOLERANCES (Unless Otherwise Specified) X = ±0.5mm X.X = ±0.25 X.XX = ±0.12mm [X.X = ±.1"] [.XX = ±.01"] [.XXX = ±.005"] ANGLE = ±3° "L" = 40mm/Meter [.5"/Foot]	 <p>BANNER ENGINEERING Corp. 9717 10th Ave. North Minneapolis, MN 55441 Tel # 763-544-3164 Fax # 763-544-3573 www.bannerengineering.com</p>
This drawing is the property of BANNER ENGINEERING Corp. and is proprietary in general and in detail. Its contents shall not be revealed to outside parties without the written consent of BANNER.	
PIT46UHF PLASTIC FIBEROPTIC ASSEMBLY & MOD'S	
5-21-98	1 OF 1
51783	-