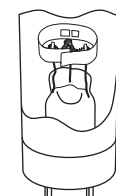
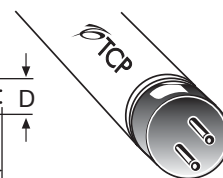
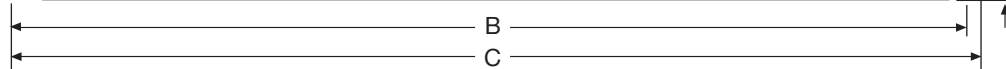


TCP Item Number: 31028T5841 Lamp code: F28T5/841



Cathode Guarded

Average Rated Life (hours)		
3 hours per start -----	24,000	
TCLP Compliant -----	Yes	
Low Mercury -----	Yes	

Physical Characteristics

Lamp type -----	T5
Base type -----	Miniature Bipin
Lamp Material -----	Soda Lime
Phosphor -----	Tri-Phosphor
Lamp Diameter (inches)	
Nominal (D) -----	.625
Maximum (D) -----	.670
Overall Length (inches)	
Nominal (C) -----	45.2
Maximum (C) -----	45.8
Face to End of opposing pin (inches)	
Maximum (B) -----	45.52
Minimum (B) -----	45.42

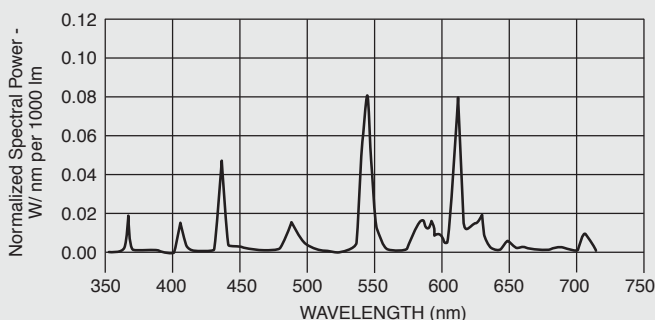
Photometric Characteristics

Initial Lumens -----	2900
Mean Lumens (40% of rated life) -----	2750
Correlated Color Temperature (Kelvin) -----	4100
Color Rendering Index (CRI) -----	85
Normal Efficacy (Lumens/Watts) -----	103

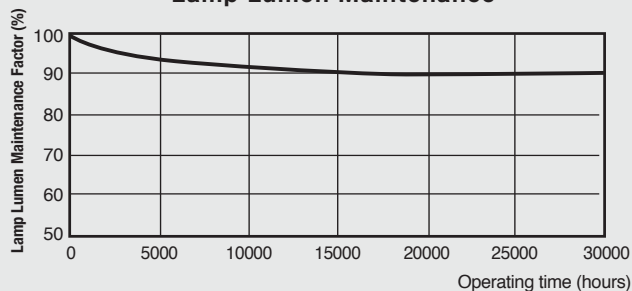
Electrical Characteristics

Lamp Watts -----	28
Nominal Lamp Volts -----	167
Nominal Lamp Operating Frequency (Hz) --	50-60 Hz
Min. Starting Temperature (°C) -----	-20
Min. Starting Lamp Voltage at 10°C -----	425
Min. Cathode Resistance (Rh/Rc) -----	4.25
Max. Cathode Resistance (Rh/Rc) -----	6.5

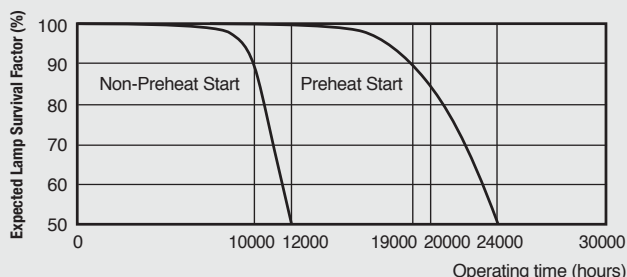
Spectral Power Distribution



Lamp Lumen Maintenance



Typical Lamp Mortality



24 MONTH STANDARD WARRANTY

For the most up-to-date specs, please visit www.tcp.com

*Testing performed with Instant Start Ballast.