

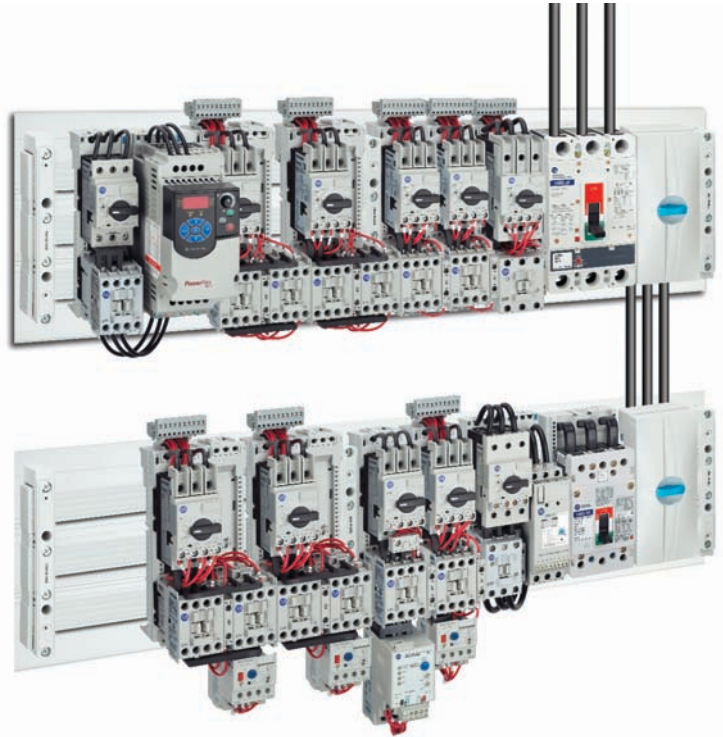
# Mounting System Solutions

Power Distribution in Control Panels

Line-to-Load  
POWER SOLUTIONS

## Benefits

- Mounting System Capacity
  - IEC: 200...1700 A Busbar
  - UL: 200...1400 A Busbar
- Ideal for Industrial Control Applications:
  - Motor Control & Protection
  - Power Distribution
  - Engineered Systems
- Design Efficiency and Cost Savings
  - Reduced wiring time for power circuits
  - Reduced wiring time for motor starters
  - Reduced wiring components
  - Reduced assembly time
  - Reduced panel space requirements
  - Reduced downtime for end user
- Circuit Breaker or Fuse Solutions
  - Main feeder
  - Load feeder
  - Branch circuit protection
- High Fault Short Circuit System Ratings
  - 65 kA, 400/480V with circuit breakers
  - 100 kA, 600V with fuses
- Complimentary Design and Analysis Tools
  - MCS™ Star Configuration Software
  - Temperature Rise Calculation Software (TRCS)



## Motor Control & Protection Solutions

### Overview

Worldwide, the MCS Mounting System has become the standard for modern and efficient power distribution for industrial control applications. The Allen-Bradley® 141A Mounting System is used in motor control and protection, power distribution and engineered system solutions.

The 141A Mounting System provides all of the components, assemblies, software configuration and analysis tools to increase panel design efficiency and reduce overall costs. Rockwell Automation customers have realized up to 40% reduction in panel space requirements and 30% reduction in panel wiring and assembly time! This means higher density controller layouts which improve cost competitiveness.

The MCS Mounting System is a global solution, meeting IEC and UL508A requirements for feeder and branch circuits.



## Power Distribution Solutions

LISTEN.  
THINK.  
SOLVE.™

# Engineered System Solutions



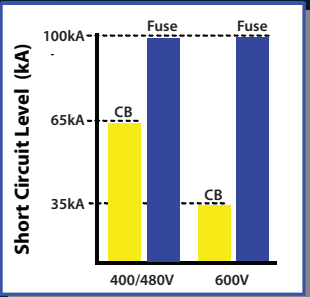
PowerFlex®  
4/4M Drives



SMC-3™  
Soft-starters



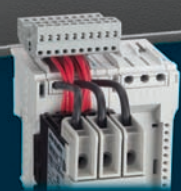
2 Component  
Motor Starters



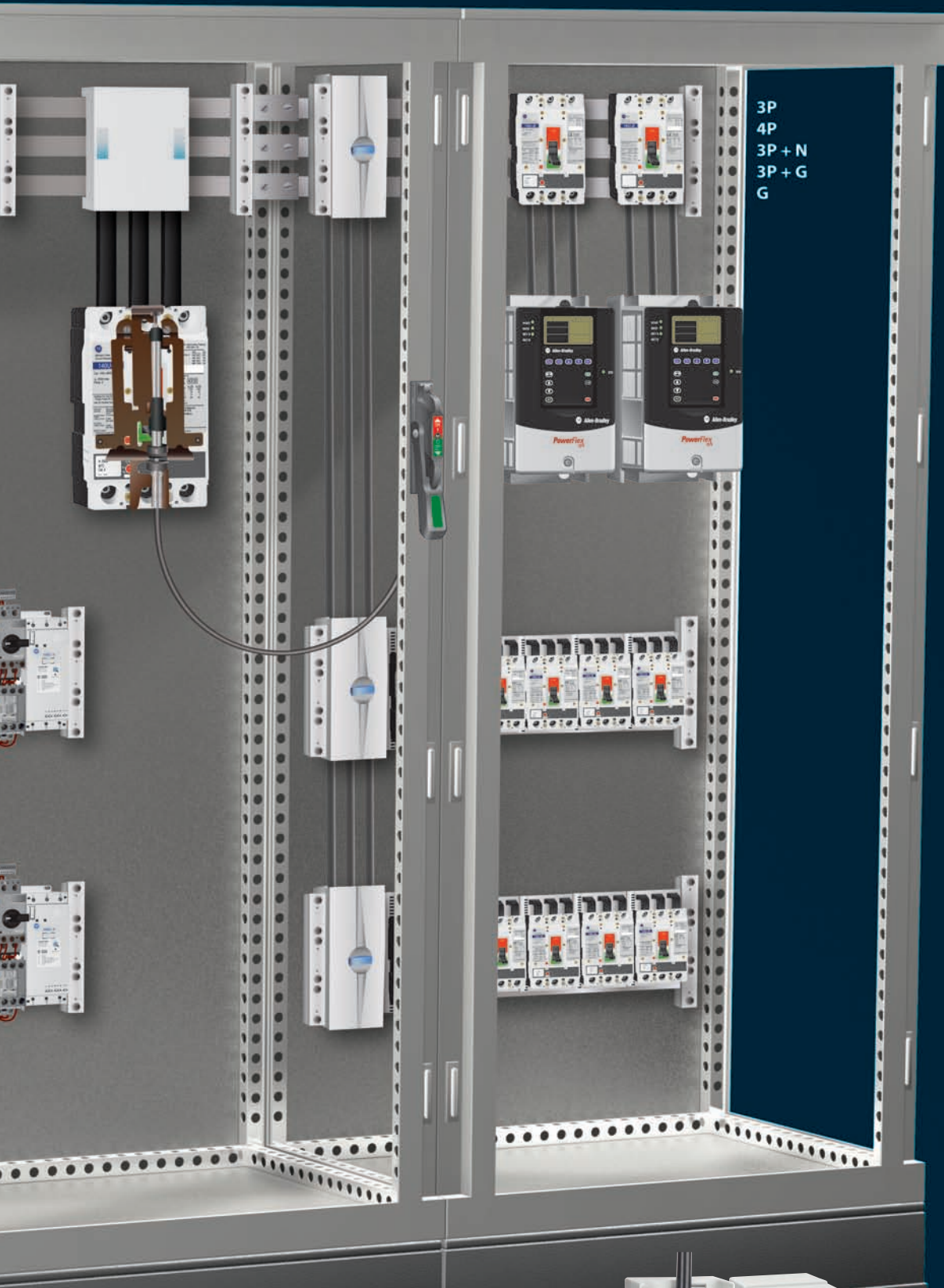
System "High Fault"  
Short Circuit  
Current Ratings



3 Component  
Motor Starters



Pre-wired  
Control Plugs



3P  
4P  
3P + N  
3P + G  
G

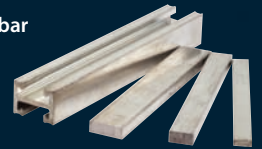
Busbar Supports



Terminals



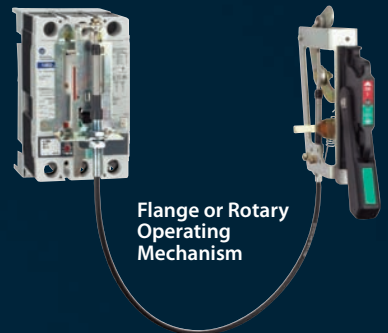
Busbar



Busbar Connectors



Flange or Rotary Operating Mechanism



Circuit Breaker & Fused Load-feeders



Mounting Modules



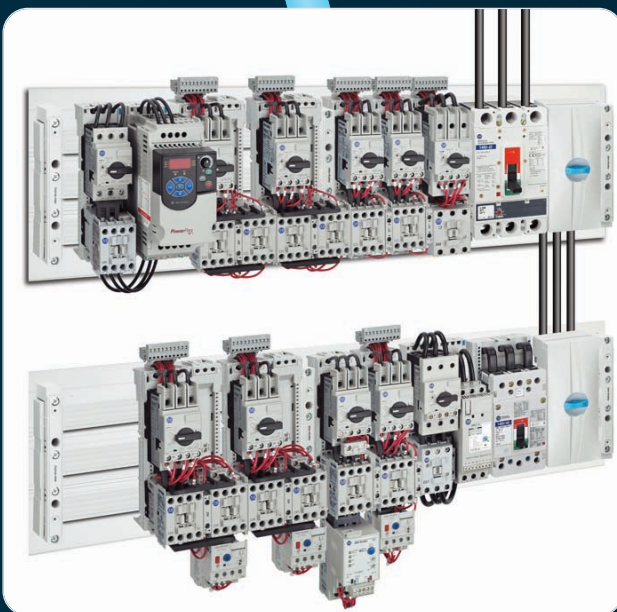
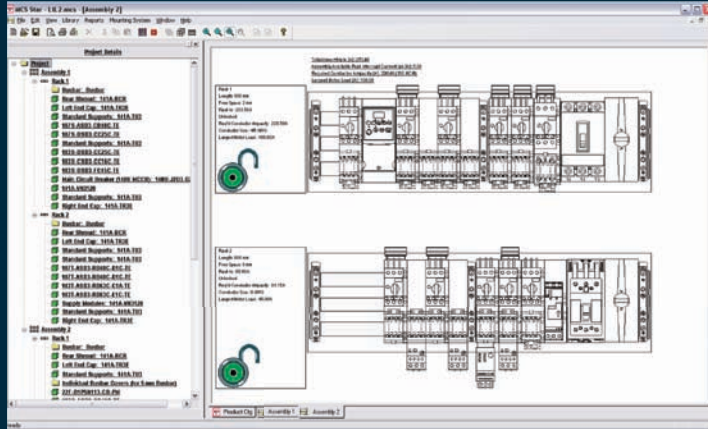
Supply Modules



Meets UL 508A Feeder Spacings

# Design and Analysis Software Tools

## MCS Star Configuration Software

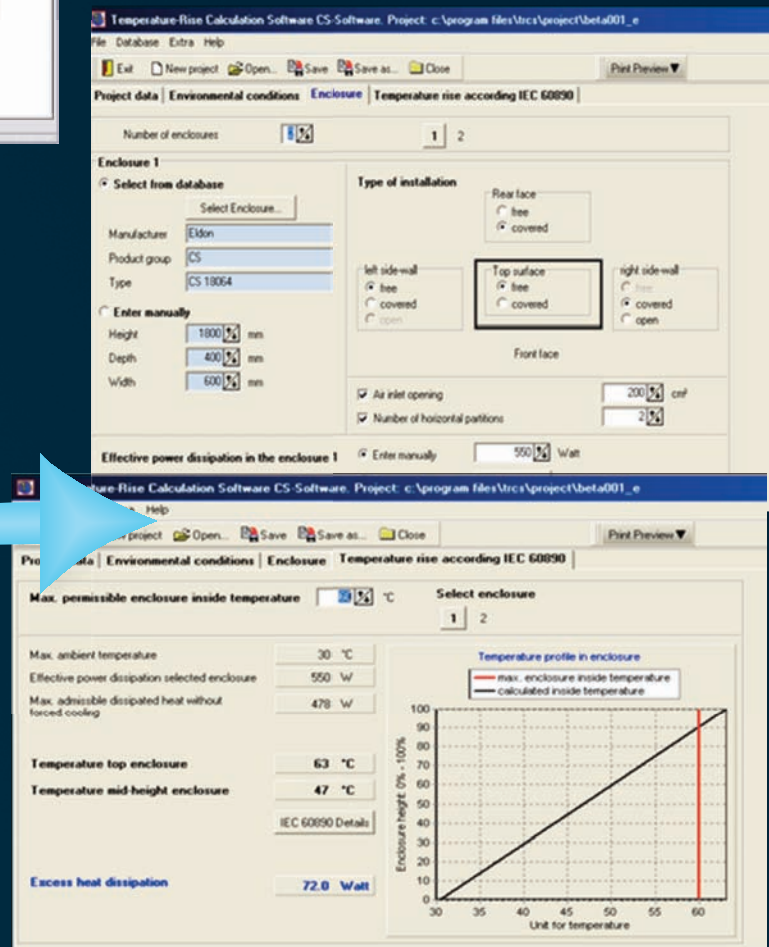


**Line-to-Load**  
POWER SOLUTIONS



Download from  
<http://www.rockwellautomation.com/en/e-tools/>  
**Product Selection**

## Temperature Rise Calculation Software (TRCS)



Allen-Bradley and MCS are trademarks of Rockwell Automation.

[www.rockwellautomation.com](http://www.rockwellautomation.com)

### Power, Control and Information Solutions Headquarters

Americas: Rockwell Automation, 1201 South Second Street, Milwaukee, WI 53204-2496 USA, Tel: (1) 414.382.2000, Fax: (1) 414.382.4444

Europe/Middle East/Africa: Rockwell Automation NV, Pegasus Park, De Kleetlaan 12a, 1831 Diegem, Belgium, Tel: (32) 2 663 0600, Fax: (32) 2 663 0640

Asia Pacific: Rockwell Automation, Level 14, Core F, Cyberport 3, 100 Cyberport Road, Hong Kong, Tel: (852) 2887 4788, Fax: (852) 2508 1846