



P3500™ / PA3500™

SIZE RANGE

1/2" to 3" pin lengths, .27 caliber

TOOL DESCRIPTION

The P3500 is a high quality low velocity, semi-automatic tool which can be used to install Ballistic Point Pins, .300 Head Drive Pins, 8mm Head Drive Pins and 1/4"-20 threaded studs up to 3" in total length. Designed for high speed and repetitive volume applications, the tool features an automatic .27 caliber strip load advance system, a precision cast, heavy duty aluminum tool body, and a rubber handle pad to minimize the effects of recoil. The PA3500 is a modified version of the P3500 that includes a power adjuster, allowing the operator to effectively decrease the power level of the load being used. A red load can be toned down to the level of a green load.

Due to the geometry of the firing chamber and piston length of the PA3500, a load power level cannot be fully reduced for drive pins over 2" in length. The power load level guidelines for drive pins over 2" in length are as follows:

DRIVE PIN LENGTH	POWER ADJUSTER SETTING (LOWEST)
2" and under	1.0
2-1/2"	1.5
3"	2.5
-	3.0

The PA3500 will not function correctly if the power adjuster dial is set to a power level that is below the recommended guidelines for the listed drive pin lengths. If the application requires a reduced power level, then a lower strength powder load needs to be used.

TECHNICAL DATA

TOOL BODY

Precision Cast Aluminum

TOOL LENGTH

13-5/8"

TOOL WEIGHT

5 lbs.

PIN TYPE

Ballistic Point Drive Pin, .300 Head Drive Pin, 8mm Head Drive Pin, 1/4"-20 Threaded Stud

PIN LENGTH

1/2" to 3" Total Length

LOAD TYPE

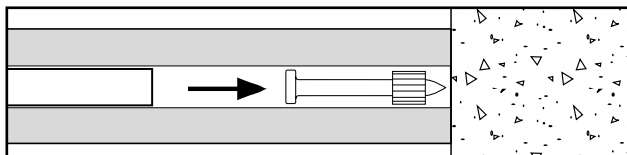
.27 Caliber in a 10 Load Strip

POWER LEVEL

Brown (2), Green (3), Yellow (4), Red (5)

TOOL OPERATION

The functions of the P3500 / PA3500 tool is based on the impact principle where the internal drive piston impacts the fastener to drive it into the base material.



Using this method, the piston is positioned at the rear of the tool barrel prior to actuation and is not in contact with the fastener. When the tool is fired, the expanding gasses of the ignited powder load drive the piston forward in the barrel. As the piston continues its forward travel, it impacts the fastener driving it into the base material.

Powder actuated tools may be used only by properly trained and licensed operators as described in ANSI Standard A 10.3. For complete tool operation details, contact your local Powers branch office or distributor for training.

TYPICAL APPLICATIONS

TRADE	APPLICATION
Acoustical	Ceiling clip assemblies
Drywall	Metal track, door frames
Forming	Concrete forms, basket clips, forming pins
Electrical	Boxes, conduit clip assemblies
Mechanical	Duct straps
Residential	Sill plates

SELECTION GUIDE

P3500 and PA3500 powder actuated tools are packaged in a deluxe kit box.

CAT NO.	DESCRIPTION	STD. CTN.	WT. EACH
52000	P3500 Powder Tool (Deluxe Kit)	1	17 1/4
52019	PA3500 Powder Tool (Deluxe Kit)	1	17 1/4

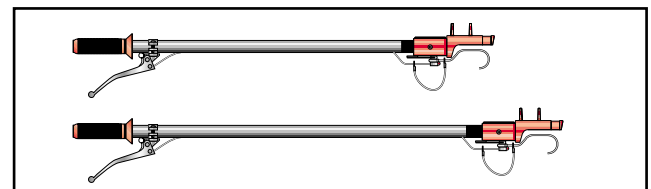
The deluxe kit includes the following items which can be also ordered separately.

CAT NO.	DESCRIPTION	STD. CTN.
52012	Tool Box	1
52014	1 Pair of Safety Glasses	1
52016	1 Set of Disposable Ear Plugs	1
52018	5mm Allen Wrench	1
52028	3/4" Wire Brush	1
52030	1/4" Wire Brush	1
52032	Flat Wire Brush	1
52034	Tool Lubricant	1
52036	P3500 / PA3500 Tool Manual	1
52046	P3500 / PA3500 Selection Label	1
52056	PAT in Use Warning Poster	1

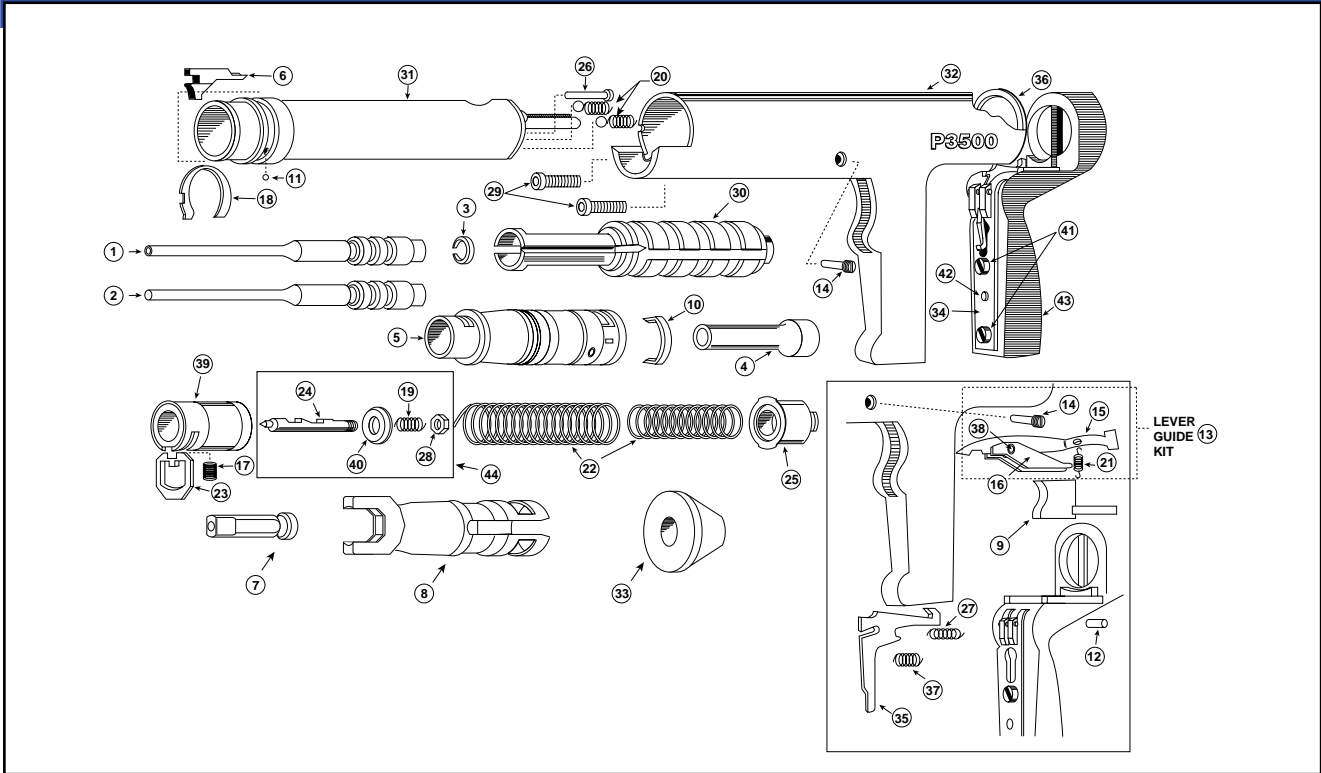
The piston for installing 8mm Head Drive Pins is listed in the following table. For applications in tight areas, a limited access base plate/guide is also available.

CAT NO.	DESCRIPTION	STD. CTN.
52100	Piston 2/DN-1 (for 8mm Head Drive Pins)	1
52114	Guide 2/F-4 Limited Access	1
52116	Baseplate 2/F-14-1 Limited Access	1

For fastening ceiling clips overhead, 6' and 8' di-electric pole tools are available.



CAT NO.	DESCRIPTION	STD. CTN.
50065	6' Di-electric Pole Tool	1
50066	8' Di-electric Pole Tool	1



REPLACEMENT PARTS - FOR POWERS MODEL P3500
(SIMILAR TO HILTI® DX 350)

CAT NO	NO.	DESCRIPTION	STD. BAG
52100	1	Piston 2/DN-1 w/ring	1
52102	2	Piston Flat End w/ring - standard	1
52106	3	Piston Ring	1
52108	4	Guide 2/F-3 - standard	1
52110	5	Baseplate 2/S13 - standard	1
52112	6	Piston Stop	1
52114	7	Guide 2/F-4 Limited Access	1
52116	8	Baseplate 2/S-14-1 Limited Access	1
52118	9	Trigger	1
52120	10	Shear Clip	1
52122	11	Steel Annular Ball	1
52124	12	Release Lever Pin	1
52126	13	Lever Guide Kit*	1
52128	14	Threaded Pin	1
52130	15	Advance Lever	1
52132	16	Advance Lever Guide	1
52134	17	Sear Spring	1
52136	18	Annular Ball Spring	1
52138	19	Firing Pin Return Spring	1
52140	20	Strip Pressure Ball & Spring	1
52142	21	Advancer Lever Spring	1
52144	22	Rear Spring Kit	1
52146	23	Sear	1
52148	24	Firing Pin	1
52150	25	End Cap	1
52152	26	Pressure Pin	1
52154	27	Compression Spring	1
52156	28	Firing Pin Nut	1
52158	29	Front Allen Cap Screw (2)	2

CAT NO	NO.	DESCRIPTION	STD. BAG
52160	30	Piston Guide	1
52162	31	Steel Liner Assembly	1
52164	32	Housing	1
52166	33	Stabilizer	1
52168	34	Support Strip Assembly	1
52170	35	Release Lever	1
52172	36	Retaining Ring	1
52174	37	Trigger Return Spring	1
52176	38	Advancer Lever Bushing	1
52178	39	Spring Guide	1
52180	40	Spring Detent	1
52182	41	Cheese Head Screw (2)	2
52184	42	Handle Allen Screw	1
52186	43	Rubber Grip	1

*Includes Item Nos. 14, 15, 16, 21 and 38.

REPLACEMENT PARTS - FOR POWERS MODEL PA3500

CAT NO.	DESCRIPTION	STD. CTN.
52103	Piston Flat End with Ring PA3500	1
52106	Piston Ring	1
52108	Guide 2/F-3	1
52110	Base Plate 2/S-13	1
52112	Piston Stop	1
52118	Trigger	1
52120	Shear Clip	1
52122	Steel Annular Ball	1
52124	Rel Lever Pin	1
52126	Lever Guide Kit Threaded	1
52128	Thread Pin	1
52130	Advanced Lever	1

CAT NO.	DESCRIPTION	STD. CTN.
52132	Advanced Lever Guide	1
52134	Sear Spring	1
52136	Annular Ball Spring	1
52138	Firing Pin Return	1
52140	Pressure Ball and Spring	1
52142	Advanced Lever Spring	1
52144	Rear Spring Kit	1
52146	Sear	1
52148	Firing Pin	1
52150	End Cap	1
52152	Pressure pin	1
52154	Compressed Spring	1
52156	Firing Pin Nut	1
52158	Front Cap Screw (2)	1
52161	Piston Guide PA3500	1
52163	Steel Liner Assembly PA3500	1
52165	Housing PA3500	1
52166	Stabilizer	1
52168	Support Strip Assembly	1
52170	Release Lever	1
52172	Retaining Ring	1
52174	Trigger Retaining Spring	1
52176	Advanced Lever Brushing	1
52178	Spring Guide	1
52180	Spring Detent	1
52181	Firing Pin Assembly	1
52182	Cheese Head Screw (2)	1
52184	Handle Allen Screw	1
52186	Rubber Grip	1
52070	Tool Cleaning Kit	1