

# Conduit Body, Cover & Gasket Assemblies

For Rigid Conduit & IMC

## Types LB, T, LL, LR, C

### Use:

To provide access to conductors for pulling, splicing, maintenance and future changes/upgrades. Allows connection of straight conduit runs, branch conduit runs and 90° bends.

### Features:

- Tapered threaded hubs (NPT)
- Packaged complete under one Catalog Number
- Ready to use

### Material/Finish

Conduit Body - Die-cast, Copper-free Aluminum with Aluminum Enamel  
Cover - Type BS Aluminum  
Gasket - Type SGN Neoprene

### Third Party Certification:



UL Listed:  
E-18095  
Suitable for wet locations.



CSA Certified:  
LR-9795  
Suitable for wet locations.

### Applicable Third Party Standards:

UL Standard: 514A  
CSA Standard: C22.2 No. 18  
Fed Spec: A-A-50563  
NEMA: FB-1, FB-2.10

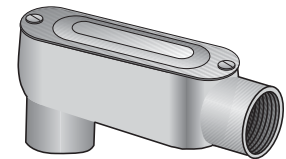
### Dimensional Data:

See Pages AC6 - AC7.

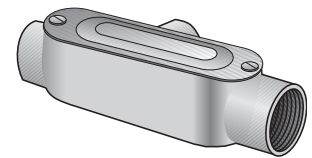
**Note:** For additional information, please refer to:

- Conduit Bodies on page AC1.
- Covers and Gaskets on page AC5.

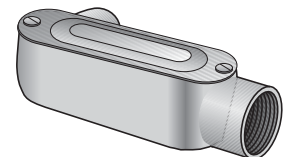
Trade Size (inches)	Catalog Number Die-Cast
½	LB-50ACG
¾	LB-75ACG
1	LB-100ACG
1¼	LB-125ACG
1½	LB-150ACG
2	LB-200ACG
½	T-50ACG
¾	T-75ACG
1	T-100ACG
1¼	T-125ACG
1½	T-150ACG
2	T-200ACG
½	LL-50ACG
¾	LL-75ACG
1	LL-100ACG
1¼	LL-125ACG
1½	LL-150ACG
2	LL-200ACG
½	LR-50ACG
¾	LR-75ACG
1	LR-100ACG
1¼	LR-125ACG
1½	LR-150ACG
2	LR-200ACG
½	C-50ACG
¾	C-75ACG
1	C-100ACG
1¼	C-125ACG
1½	C-150ACG
2	C-200ACG



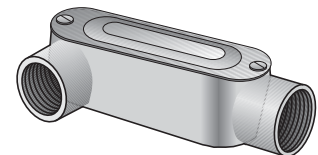
Type LB-ACG



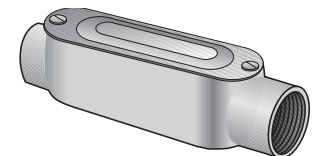
Type T-ACG



Type LL-ACG



Type LR-ACG



Type C-ACG