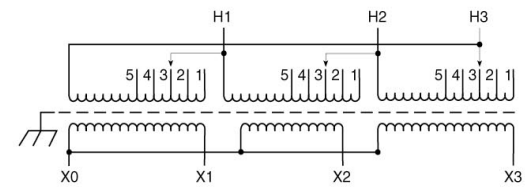
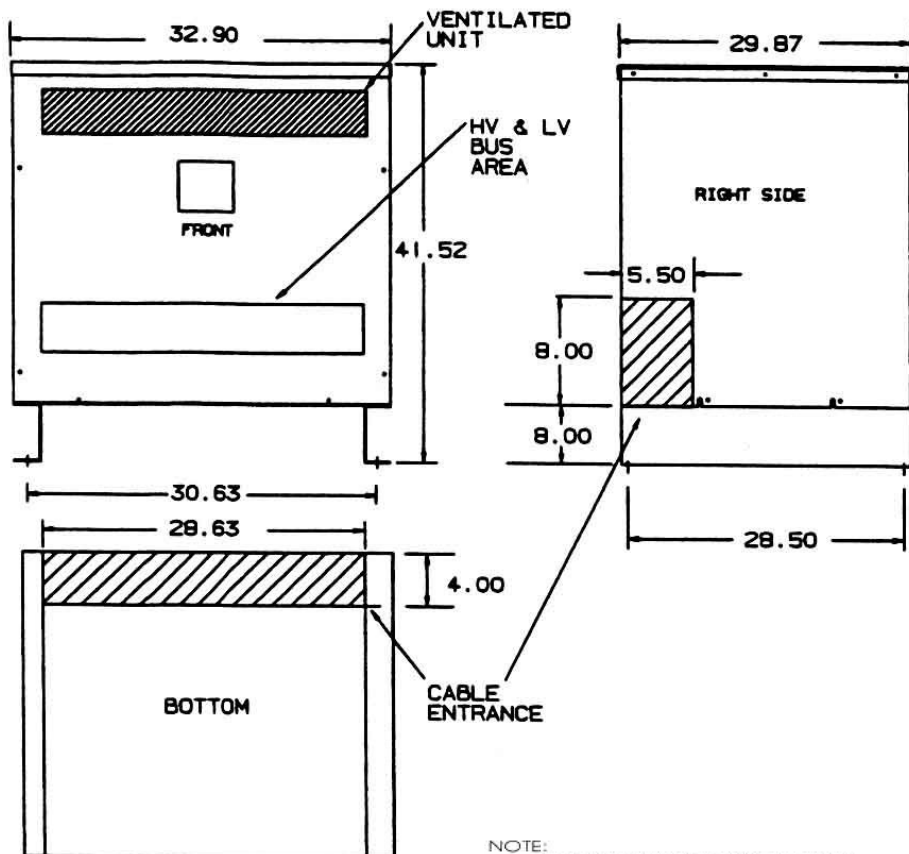


# Revisions



Primary Volts	%	Connect Leads to Tap No.
604	105	1
589	102.5	2
575	100	3
561	97.5	4
546	95	5

Secondary Volts		Connect Leads to Tap No.
460		X1, X2, X3
266		X1 & X0 X2 & X0 X3 & X0
1 phase		

NOTE: PRIMARY AND SECONDARY BUS AREA IN FRONT OF CASE.

KEY: DENOTES CONDUIT AREAS

KVA	CATALOG NUMBER	VOLTAGE		WEATHER SHIELD	WEIGHT	PHASE	FREQ.
		HIGH	LOW				
175	<b>DTHB-0175-4S</b>	575Δ	460Y/266	WS-A-4	1130 Lbs	3φ	60 Hz

### TYPICAL PERFORMANCE DATA

Winding Rise	150°C
Insulation	220°C
Sound Level	55 dB

Regulation @ 100% PF	
Standards:	UL/CSA

Impedance:	4.2%
------------	------

Typical Efficiency	
No Load Losses	
Full Load Losses	



Type No.
