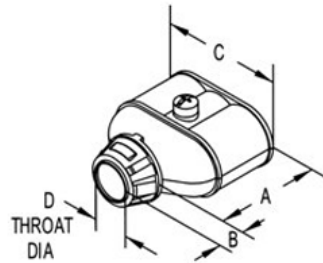


Cable Snap-in - Duplex - Whipper-Snap Connector - Zinc

Images



[Download Photo Image](#)

[Download Dimensional Image](#)

Dimension A in Inches: 1.63
Dimension B in Inches: .43
Dimension C in Inches: 1.88
Dimension D in Inches: .53

Application

Recommended cable types 14/2 to 10/2 with cable range O.D. Steel or Aluminum .38 to .59 AC/MC/MCIA and Steel or Aluminum 3/8" FMC. Simply snap cables into connector and snap assembly into electrical box. No tools required! Integral internal spring steel locking tabs fasten cable or conduit. External spring steel locking tabs secures connector to electrical box. Suitable for maintaining grounding continuity when installed in accordance with the NEC.

Product Information

Material: Zinc Die Cast
Finish: Ball Burnished, Mirror Smooth

Certifications & Codes:

Federal Specification Number: A-A-50552
NEMA Standard: FB-1
UL File Number: E20534
UL Standard: UL514B
UNSPSC: 39121438

Catalog ID: 3838SP

UPC Number: 78174770690

Description: 3/8" Duplex Whipper-Snap® Snap-In Connector (Non-Insulated)

Application: Recommended cable types 14/2 to 10/2 with cable range O.D. Steel or Aluminum .38 to .59 AC/MC/MCIA and Steel or Aluminum 3/8" FMC. Simply snap cables into connector and snap assembly into electrical box. No tools required! Integral internal spring steel locking tabs fasten cable or conduit. External spring steel locking tabs secures connector to electrical box. Suitable for maintaining grounding continuity when installed in accordance with the NEC.

Trade Size: 3/8"

Std Pkg Qty: 250

Unit Qty: 25